

“back to the roots”

2010 Garden Guide



Margaret's
GARDEN
In Memory of Margaret B.

Nurseries
Parkland
Garden Centre *ltd.*

www.parklandgarden.ca

Open Year Round
Located on Highway 11 East, Red Deer

Central Alberta's Best Kept Secret!

Nurseries Parkland Garden Centre Ltd.

Happenings at Parkland

Private Garden Tours

Thursday, August 12, 2010 5:45pm until 9:00pm
View some spectacular private gardens in and around Red Deer. Please register at 403.346.5613.

Craft and Market Sales

Saturday, November 13, 20 and 27, 2010
Saturday, December 11, 2010

Admission is free. We ask that you bring a non-perishable item for the food bank.

Winter Sculptures

Come out during December to see our renowned Ice Sculptures and come inside as well to see our beautifully decorated, themed Christmas trees and astounding array of poinsettias! Enjoy a cup of hot mulled cider as you relax and take in the spectacular sites.



Courses

We offer spring, summer and winter courses. For a complete listing, visit www.parklandgarden.ca or drop by for a course description sheet.

Weddings

Planning that special day? Would you like a garden wedding? For more details, contact us at 403.346.5613. Have your outdoor garden dream wedding!

Our Guarantee

All of our plants are guaranteed to be true to name, top quality, healthy and free of insects or disease. If you should have any problems or concerns please contact us.

Trees and shrubs are guaranteed for one (1) year from date of purchase and for the original purchase value.

Our guarantee applies to trees or shrubs that fail to grow after being properly planted and cared for in a recommended area. Guarantee excludes damage done by animals, chemicals, vandalism or nursery stock planted in above ground containers.

The original receipt and nursery stock must be presented prior to or at time of adjustment. For more information on returns of plant material, please call us at 403.346.5613.

We are also offering a 5 year warranty with the purchase of MYKE. See www.mymyke.com and ask our Specialists for details.



Delivery Service

We realize that some of our customers may not have the ability to transport their statuary, trees or furniture home. We will recommend a delivery service for your convenience.

There is a fee for delivery and prior arrangements need to be made.

Delivery service does not apply to bulk products.

Please contact our Information Centre for all your delivery inquiries.

Directions to us

Located East of Red Deer on Highway 11
only 3 minutes East of 30 Avenue

Red Deer, AB T4N 5E2

Phone: 403.346.5613

Fax: 403.346.4443

E-mail: info@parklandgc.ca



Find us on the web: www.parklandgarden.ca

In the Garden Shop for 2010

You will be pleasantly surprised as you walk through our store! We carry a wonderful selection of home décor accents, gourmet fare and special items for that perfect gift.

Celebrate the arrival of spring by adding a new gazing ball, decorative stake, or hand-tuned wind chime to your yard. We also have an excellent selection of watering globes, butterfly and hummingbird feeders. We carry an impressive year round selection of imported wood furniture in styles you won't find anywhere else; whether you choose nesting tables or an antiqued armoire, you'll enjoy these quality pieces for years to come.

If you are looking for a distinctive gift, why not spoil someone with our Tea Forte gourmet teas or Crabtree and Evelyn's exquisite body care products?

If you collect Department 56 villages or Snowbabies, you will be pleased to know that we have a superb selection on display later in the year.

The possibilities are endless... become inspired with a trip to Parkland Garden Centre!

Keeping it Green

Parkland Nurseries & Garden Centre endeavors to play an active role with our environmental Carbon footprint. By being selective in the products that we sell and by searching for the most ecological solution to plant growth and problems, we offer a wide range of products that are organic OMRI rated and safe for the environment.

Parkland Garden Centre has a new line of green products which work very well when used correctly. Children and pets remain safe with no exposure to harmful chemicals.

Sustainable Landscaping Tips

Choosing Plants

- Select plants appropriate to your garden's conditions
- Consider hours of sunlight, moisture levels, proximity to buildings and competing plants
- When plant shopping, ask about mature heights and spreads to allow adequate space
- Match the plant's specific needs with the level of care you are willing to provide

Waterwise Thinking

- Water less frequently, but more deeply to encourage roots to grow into soils that are more moist
- Collect rain water in barrels or watering cans
- Mulch garden beds
- Water in the morning to prevent evaporation
- Improve drainage to prevent pooling or excessive runoff
- Reduce lawn areas where unnecessary and replant with perennial or shrub beds

Pest Management

- Identify pests and diseases before selecting a control; garden centre staff can help you with this and provide you with organic and least-toxic options
- Use organic fertilizers, soil additives or compost to reduce chemical fertilizers applications
- Add plants that attract beneficial insects

Wildlife Habitats

- Include native plant species where sustainable to the garden environment
- Add flowering, nectar-producing plants for insects, birds and butterflies
- Place a bird bath, pond or other water source for wildlife
- Vary the height and density of plantings to create a diverse habitat

Come and talk to the Specialists, "The Green Team".

Did You Know...?

We re-use all of our bedding plant flats – we even issue credit for your used mesh-bottom flats when you return them. We also re-use some of our plastic pots. So, if you're cleaning up the garage, garden shed or backyard, and don't know what to do with all the plastics, bring in any and all of your flats and pots and earn a bit of credit for the flats only. If we all work together, we can make a difference for our great outdoors!

Parkland Nurseries & Garden Centre is proud to announce our new "Plant Finder", located on our website at www.parklandgarden.ca. This is a great tool to help you with designing and planning your yard. Come out and talk to our Specialists and they will assist you with all of your planting needs.

Traditional combination Weed and Feed is no longer available as of January, 2010 due to government regulations. While similar products are still offered in separate forms, fertilizer alone or pesticide alone, we now carry Sarritor as a replacement for the former combined product.

Sarritor – Biological Lawn Weed Killer

- Fast acting and effective non-chemical weed control
- Active ingredient is a naturally occurring fungus
- Controls dandelions and does not harm the lawn
- Contains enough Sarritor to treat approximately 750 dandelions
- Sarritor fungus dies after killing the weed. It does not persist in the soil

Easy to Apply:

- Product is a dry granule that is spot applied directly to the weed.
- Apply in the spring or fall when daytime highs are less than 24°C.
- Needs rain or irrigation within 12 hours of application to activate.
- Product includes an applicator lid that dispenses the correct dose – one dose per dandelion is all it takes!

The following are only some of our eco-friendly line of products that are available to keep your green space green and comfortable. Come in and talk to our experts and let them assist you in becoming more environmentally friendly.

Neem Foliar Spray:	Organic; used as a pest deterrent
Green Earth's Home Care Flying & Crawling Insect Killer:	Botanical Pyrethrum; used for control of a wide variety of insects
Scott's Turf Builder Weed Prevention:	Biological weed and feed; uses Turf Maze to fertilize and prevent weeds from germinating
Safer's products:	Insecticidal soap for control of aphids, mites, whitefly, etc.
Green Earth Garden Fungicide:	Sulphur-based product; for control of diseases
Turf Revolution:	Involves soil testing; feed lawn specifically nutrients that it requires – no guessing
CLLgro or Earth Green Premium Soils:	Environmentally friendly; best performance for plants
Oasis Water Barrels:	Save water; comes with all hardware to make ready to use
Perma Life Recycled Tire Mulch:	Lasts lifetime; safe for environment; great for playgrounds
Recycled Tire Tree Rings:	Great for water conservation; new colors: red/green
Corn Weed Fabric:	Weed barrier; composts itself in 5 years
Biological Insect Control:	Ladybug/Nematodes/Grubs; save applying chemicals
Timers for Watering Systems:	Reduce water consumption

Amazing New Annuals

In our greenhouse area are over 800 varieties of annual flower and foliage plants and vegetable plants. While we always keep the reliable mainline varieties, each year there are a number of new additions to our already vast selection. Some of this year's standouts include:

Geranium "First Yellow" –an all-new color in geraniums – the first true yellow!

Geranium "Little Lady" –3 colors of double flowered mini geraniums – great in small arrangements for the patio table

Euphorbia "Breathless Blush" –fine soft pink flowers over burgundy leaves – a great filler for full sun planters

Petunia "Pretty Much Picasso" –purple flowers edged in lime green cover this new trailing petunia

Lobularia "Snow Princess" –an all new variety, from cuttings, covered in tiny snowy-white flowers

Fountain Grass – "Fireworks" –a new purple fountain grass variegated with white and pink streaks – great in the centre of the patio planters – arriving in late April

Short Season Sweet Potatoes – not for the open garden, these new varieties of edible sweet potatoes perform best in a small greenhouse or large patio planters in full sun.

There's so much more – come on in and check us out!

Container Gardens

Containers allow you to express your creativity and transform even the smallest area into a garden. Have the best container gardens ever by following a few simple rules.

- Bring your containers in for our experts to custom plant them for you or you can do them yourself with the following tips.
- Choose the biggest containers that you can afford for the most impact.
- Keep the styles of the pots similar to your garden. If you have a formal garden, wrought iron or high-gloss glazed ceramic work best. For informal gardens, terra cotta and flat-finished ceramic work best.
- Containers do not need to be exactly the same. Use different heights, shapes, and sizes; the containers should all have a common element such as color.
- Containers must have drainage holes to ensure good plant health.
- Make sure all the varieties in your container have similar light and water requirements.
- Use Premier soil mix; avoid using garden loam.
- Fertilize with slow release fertilizers – Smart Cote – 14-14-14.
- Water daily using rain water if possible.
- Remove spent blooms regularly for better re-blooming.



In the Greenhouse



Eagle Rock Custom Creations



"Let us ROCK your world"

Chuck Arneson

Owner/Operator

Ph: (403) 872-3117

email: eaglerock54@yahoo.ca

• Residential and Commercial

• Bobcat Services

• Mini Excavator

• Flagstone

• Landscape Rocks

• All Variety of Trees

• Flagstone Patios

Flowering Hanging Gardens

10" (25 cm) and 12" (30 cm) pots

Buy one at regular price and get the second for half price

(Of equal or lesser value)

Present this coupon on any Wednesday in June 2010 • Limit one coupon per customer/per purchase • While Quantities Last

New in the Garden Shop for 2010

There are more than plants and flowers that are new and exciting in the greenhouse this year to enhance your gardening experience. You'll be pleasantly surprised as you walk through our store!

- Shepherd's Hooks** – a new selection of heavy duty single and double hooks with unique ornamentation.
- Birch Bark Hanging Baskets** – beautiful and new 14" (35cm) baskets made of woven birch bark and jute.
- Tomato Cages** – now in several exciting colours to brighten up the veggie patch.
- Wrought Iron Arbors** – comes with gate or bench.
- Cocoa Liners** – now in 60cm and 75cm widths on the roll - we'll cut the size to fit your container.

"Naturally" Good Food for Plants

Seaweed Plant Food – organic based and designed to be used all year round in combination with other fertilizers; ideal for houseplants, flowers, lawns etc.

Greensand – a natural mineral originating in New Jersey; loosens up tight soils and has a fertilizer component by releasing minerals tied up in the soil.

Kelp Meal – contains over 60 different minerals and elements; increases the uptake of nutrients and boosts plant immunity; good for plant health and vigor.

Bone Meal – granulated formula that works fast; releases nutrients for the plant; use for all of your transplanting and existing plant nutrient needs.

Blood and Bone Meal – nutrients and a boost of iron; easy to use and dust free; does not burn plants.

Blood Meal – good source of nitrogen and iron; safe to use any time of the year; when applied at the soil surface, can repel unwanted visitors



Feature Perennial for 2010

Double Fernleaf Peony - *Paeonia tenuifolia* 'Flore Plena'

Height: 24" **Spread:** 24" **Sunlight:** Full **Hardiness Zone:** 2

Double Fernleaf Peony features bold lightly-scented red flowers at the ends of the stems from late spring to early summer. The flowers are excellent for cutting. It's deeply cut compound leaves remain green in colour throughout the season.



The best perennials come out of the blue.™

Enjoy beautiful flowers every year when you plant hardy, Canadian grown Heritage Perennials®! Look for our distinctive blue pots, they are your assurance of success in your garden.

JOIN OUR ONLINE GARDENING CLUB

You will receive our newsletter plus special discount coupons.

Sign up today and your name will be entered into a monthly draw for a chance to win a \$50 gift certificate!



Perennials

Name	Height/ Spread	Sun/ Shade	Flower Colour	Bloom Time	Soil Moisture	Features/Uses
ALPINE ASTER <i>Aster alpinus</i>	12/12 in 30/30 cm	☀	pink, purple	May to June	well drained	Short plants display star-shaped daisies. Ideal for front of border or rockery.
ALPINE VERONICA <i>Veronica allioni</i>	5/12 in 1 5/30 cm	☀☀	blue-violet	June to Aug	well drained	Attractive compact flower spikes. Excellent edging or alpine rockery plant.
ALYSSUM-Basket of Gold <i>Aurinia saxatile</i>	8/24 in 20/60 cm	☀☀	yellow	May to June	well drained	Good spring blooming rockery plant. Flowers in shades of yellow.
ANTENNARIA-Pussy Toes <i>Antennaria dioica</i>	6/12 in 15/30 cm	☀	pink	May to June	well drained	Forms dense carpet of silvery foliage. Drought tolerant. Good rock garden plant.
ARABIS <i>Arabis species</i>	8/24 in 20/60 cm	☀	red, pink, white	May to June	well drained	Spring flowering plant cascades over rocks. Dead head flowers after blooming.
ASTILBE <i>Astilbe species</i>	36/30 in 90/75 cm	☀☀	various	June to Aug.	moist soil	Showy flower spikes on lacy foliage. Must have moist soil. Key West (pink), Key Largo (pink), Key Biscayne (light pink), all have purple foliage.
AURICULA PRIMROSE <i>Primula auricula</i>	8/8 in 20/20 cm	☀☀	mixed various	April to May	moist soil	Wide range of colors with yellow eyes. Good for rock gardens or edging borders.
BABY'S BREATH <i>Gypsophila paniculata</i>	36/24 in 90/60 cm	☀☀	white, pink	June to July	well drained	Bristol Fairy is a suggested variety. Flowers for fresh or dried bouquets.
BABY'S BREATH-CREEPING <i>Gypsophila repens</i>	6/24 in 90/60 cm	☀☀	white, pink	June to July	well drained	Low creeping mat for edging or rock gardens.
BACHELOR'S BUTTON <i>Centaurea montana</i>	24/24 in 60/60 cm	☀	bluish- purple	June to Aug.	well drained	Vigorous growing perennial for full sun. Bright blue flowers.
BALLOON FLOWER <i>Platycodon grandiflorus</i>	30/24 in 75/60 cm	☀☀	purple, white	June to Aug.	well drained	Buds pop into balloon-like flowers! Similar to Campanula (Bellflower).
BARRENWORT <i>Epimedium rubrum</i>	12/12 in 30/30 cm	●	pink	May to June	moist soil	Rare semi-evergreen foliage in various colors. Slow spreading ground cover for shaded areas.
BEARD-TONGUE PENSTEMON <i>Penstemon hybrids</i>	36/24 in 90/60 cm	☀	various	May to Aug.	well drained	Tubular flower spikes like snapdragons. Taller varieties make good cut flowers.
BEEBALM <i>Monarda didyma</i>	36/18 in 90/45 cm	☀	purple, pink, red, white	June to July	moist soil	Tall plants with aromatic foliage. Attracts bees & butterflies. Good in borders or for cutting. Varieties available - Marshall's Delight (pink), Jacob Cline (red), Fireball (red), Petite Delight (pink).
BELFLOWER <i>Campanula carpatica</i>	9/12 in 20/30 cm	☀☀	purple, white	May to June	well drained	Cup-shaped flowers on compact clumps.
BERGENIA <i>Bergenia cordifolia</i>	18/24 in 45/60 cm	☀●☀	pink, white	June to July	moist soil	Large glossy green leaves turn bronze in fall.
MONKSHOOD <i>Aconitum spp</i>	48/24 in 120/60 cm	●☀	purple, white, pink	July to Aug	moist soil	Useful for cut flowers or border.
BLACK-EYED SUSAN <i>Rudbeckia fulgida 'Goldsturm'</i>	36/18 in 90/45 cm	☀	yellow, orange	July to Sept.	well drained	Long blooming flowers. Perennial of the Year for 1999.
BLANKET FLOWER <i>Gaillardia x grandiflora 'Goblin'</i>	36/12 in 90/30 cm	☀	red eye/ gold tip	June to Sept.	well drained	Daisy-like flowers with contrasting centre eye.
BLAZING STAR <i>Liatrus spicata 'Kobold'</i>	36/18 in 90/45 cm	☀	orange, white, purple	July to Sept.	well drained	Long lasting spikes good as cut flower. Beautiful border plant also called Gay Feather.
BLEEDING HEART-Fernleaf <i>Dicentra formosa hybrids</i>	18/12 in 45/30 cm	☀●☀	white, red	June to Sept	well drained	Compact mounds of ferny foliage. Blooms all summer.
BLEEDING HEART <i>Dicentra spectabilis</i>	36/24 in 90/60 cm	☀●☀	pink, white	May to June	well drained	Drooping chains of heart-shaped flowers!

Perennials

Name	Height/ Spread	Sun/ Shade	Flower Colour	Bloom Time	Soil Moisture	Features/Uses
BUGBANE <i>Cimicifuga racemosa</i> 'Brunette'	72/36 in 200/90 cm	☉●	pale pink	Aug to Sept.	moist soil	Purple leaves with pale pink flowers.
BUGBANE <i>Cimicifuga simplex</i>	48/36 in 120/90 cm	☉●	white	Sept to Oct.	moist soil	White flower in the summer.
BUGLEWEED <i>Ajuga reptans</i>	8/18 in 15/45 cm	☉●	purple	May to June	moist soil	Low ground cover with round leaves. Used for mass planting.
BUNCHBERRY <i>Cornus canadensis</i>	6/8 in 15/20 cm	☉●	white	May to June	moist acidic	Native ground cover with glossy leaves. Red berries & fall foliage.
CAMPION <i>Lychnis species</i>	15/12 in 38/30 cm	☼	pink	May to Sept.	well drained	Self-seeding alpine rockery plants.
CANTERBURY BELLS <i>Campanula medium</i>	36/12 in 90/30 cm	☉☼	purple, white	May to July	well drained	Old fashioned favorite with big bell flowers. Biennial.
CHINA PAGODA PRIMOSE <i>Primula vialii</i>	24/12 in 60/30 cm	☉●	mauve, pink	May to July	moist soil	Gorgeous rocket shaped spikes of flowers in a dazzling mauve-pink combination.
CLUSTERED BELLFLOWER <i>Campanula glomerata</i>	24/24 in 60/60 cm	☉☼	purple	June to July	well drained	Clusters of violet flowers. Invasive – spreads rapidly by stolons.
COLUMBINE HYBRIDS <i>Aquilegia x hybrida</i>	36/24 in 90/60 cm	☉●☼	various	May to June	moist & well drained	Popular perennial available in various colours.
CONFLOWER <i>Echinacea hybrids</i>	48/24 in 120/60 cm	☼	purple, white	July to Sept.	well drained	Magnus was the 1998 Perennial Plant of the Year.
CORAL BELLS <i>Heuchera hybrid</i>	24/18 in 60/45 cm	☉	white	June to July	moist & well drained	Leaves large and ruffled. Burgundy underneath. Try 'Peach Flambe', 'Sparkling Burgandy', 'Orange Man'.
CORNFLOWER <i>Centaurea macrocephala</i>	4/2 ft 120/60 cm	☼	gold- yellow	June to Aug.	well drained	Good for the back of a border. Excellent for cutting, fresh or dried.
CORYDALIS <i>Corydalis lutea</i>	12/12 in 30/30 cm	☉●	yellow	June to Sept.	moist & well drained	Long bloomer, self-seeds.
CREeping JENNY <i>Lysimachia nummularia</i>	4/18 in 10/45 cm	☉☼	gold, yellow	May to Aug.	moist soil	Trailing stems quickly form thick carpet.
CREeping VERONICA <i>Veronica repens</i>	2/12 in 5/30 cm	☉☼	white	May to June	well drained	Low creeping carpet with spring flowers. Good ground cover or rock garden plant.
CUPID'S DART <i>Catananche caerulea</i>	24/12 in 60/30 cm	☼	lavender	July to Aug.	well drained	Cut papery flower for everlasting dried flower. Drought resistant plant for hot dry area.
CUSHION SPURGE <i>Euphorbia polychroma</i>	18/18 in 45/45 cm	☼	yellow	May to June	well drained	Dome of leaves covered by colored bracts. Drought-tolerant for hot, dry location.
DAYLILY <i>Hemerocallis x hybrida</i>	36/24 in 90/60 cm	☉☼	various	July to Aug.	well drained	Plants form sturdy clumps of grassy foliage. Lily-shaped flowers bloom in long succession. Moroccan Sunrise (lilac & cream), Regency Heights (cream violet-green), Ruby Stella (red) are just a few.
DELPHINIUM- BLUE ELF <i>Delphinium grandiflorum</i>	12/12 in 30/30 cm	☼	bluish- purple	June to Aug.	well drained	Dwarf bushy mounds. Bright blue flowers.
DELPHINIUM-MAGIC FOUNTAIN <i>Delphinium x elatum</i>	30/24 in 75/60 cm	☼	mix	June to July	well drained	Colorful spikes of double flowers for cutting. Remove old flowers to induce repeat blooming.
DELPHINIUM <i>Delphinium spp</i>	6/3 ft 1.8/9 m	☼	bluish- violet	June to July	well drained	Tall colorful spikes of double flowers for cutting. Remove old flowers to induce repeat blooms. Requires staking. Good background to border. 'New Millennium Hybrids' (all colors) are good to try.
DIANTHUS-CHEDDAR PINK <i>Dianthus gratianopolitanus</i>	12/12 in 30/30 cm	☼	pink, red, white,	June to Aug	well drained	Sweet scented flowers good for cutting. Popular for edging and rockeries.

Perennials

Name	Height/ Spread	Sun/ Shade	Flower Colour	Bloom Time	Soil Moisture	Features/Uses
DIANTHUS-CLOVE PINK <i>Dianthus spp</i>	12/12 in 30/30 cm	☀	pink, white, mix	May to June	well drained	Bluish grassy foliage forms a wide clump. Carnation -type flower has a strong clove scent.
DIANTHUS-MAIDEN PINK <i>Dianthus deltoides</i>	8/18 in 20/45 cm	☀	pink, red, white	June to Aug	well drained	Low spreading ground cover.
DRAGON'S BLOOD SEDUM <i>Sedum spurium</i>	6/18 in 15/45 cm	☀	various	June to Aug.	well drained	Succulent evergreen ground cover.
DRUMSTICK PRIMROSE <i>Primula denticulata</i>	12/10 in 30/25 cm	☀●	mixed	May to June	moist soil	White and lavender ball shaped flowers.
DWARF AVENS <i>Geum x 'Borisii'</i>	12/12 in 30/30 cm	☀	orange	May to June	well drained	Rare, bright orange flowers good for cutting. Compact plant for edging or rockery.
DWARF STONECROP <i>Sedum x species</i>	6/18 in 15/45 cm	☀	various, yellow	June to Aug.	well drained	Spreading drought tolerant ground cover.
EDELWEISS <i>Leontopodium alpinum</i>	6/10 in 15/25 cm	☀	white	June to July	well drained	Popular rockery plant from Swiss Alps. woolly flowers used for dried arrangements.
FAIRY THIMBLE <i>Campanula cochlearifolia</i>	4/12 in 10/30 cm	☀☀	purple	June to Aug.	well drained	Alpine rockery plant with little bells. Fast spreading plant.
FALL ASTER <i>Aster novae-angliae</i>	48/36 in 120/90 cm	☀	red, pink	Aug. to Sept.	well drained	Tall varieties are excellent for cut flowers. New England Asters are best for cutting.
FALL ASTER <i>Aster novi-belgi</i>	48/36 in 120/90 cm	☀	purple	Aug. to Sept.	well drained	Michaelmas Daisies are fall blooming.
FALSE SUNFLOWER <i>Heliopsis helianthoides</i>	48/24 in 120/60 cm	☀	yellow	July to Sept.	well drained	Large, long blooming, daisy-like flowers. Strong sturdy stems are good for cutting.
FERN-FIDDLEHEAD <i>Matteucia struthiopteris</i>	4/2 ft 12/60 cm	☀●	n/a	n/a	moist soil	Native. Good ground cover for shady moist location
FERN-LADY <i>Athyrium filix-femina</i>	24/24 in 60/60 cm	☀●	n/a	n/a	moist	Lacy-looking fan. Creeping rhizome.
FERN-MALE <i>Dryopteris filix-mas</i>	24/24 in 60/60 cm	☀●	n/a	n/a	moist	Easy, elegant fern.
FERN -NORTHERN MAIDEN-HAIR <i>Adiantum pedatum</i>	24/24 in 60/60 cm	☀●	n/a	n/a	moist	Delicate fronds turn gold in fall. Very beautiful.
FEVERFEW <i>Chrysanthemum parthenium</i>	24/12 in 60/30 cm	☀	white, yel- low	June to Sept	well drained	Mum-like daisy flowers good for cutting. Foliage is aromatic.
FLEABANE <i>Erigeron speciosus</i>	30/24 in 75/60 cm	☀	pink	June to Aug.	well drained	Excellent cut flower or for summer border. Pink Jewel is the prettiest variety.
FLEECEFLOWER <i>Persicaria affne 'Diminity'</i>	8/24 in 20/60 cm	☀☀	red	June to Aug.	well drained	Low mat of feathery leaves turn red in fall. Short spikes of flowers fade to pink.
FOAMFLOWER <i>Tiarella cordifolia</i>	12/12 in 30/30 cm	☀●	pink	May to July	moist soil	Evergreen with bronzy winter color. Low clumps of foliage with flower sprays.
FOXGLOVE-COMMON <i>Digitalis purpurea</i>	48/18 in 120/45 cm	☀☀	purple, pink mix	May to July	moist & well drained	Large showy spikes of flowers for cutting. Biennial that self seeds.
GARDEN PHLOX <i>Phlox paniculata</i>	48/30 in 120/75 cm	☀	various	July to Sept.	moist & well drained	Spectacular clusters of flowers. Wide range of colors for the border, very fragrant.
GASPLANT <i>Dictamnus alba</i>	36/24 in 90/60 cm	☀	white, lavender	June to July	well drained	Super plant for the sunny border. Spike-like flowers rise above the foliage.
GERANIUM -BLOOD CRANES-BILL <i>Geranium sanguineum</i>	18/18 in 45/45 cm	☀☀	white, pink, red	June to Aug.	well drained	Low spreading mound of finely cut leaves.
GERANIUM JOHNSON BLUE <i>Geranium x 'Johnson Blue'</i>	24/24 in 60/60 cm	☀	blue-violet	June to Aug.	well drained	Popular geranium with large bluish flowers. Vigorous border plant type. Self-seeder.
GERMAN STATICE <i>Goniolimon tataricum</i>	16/12 in 40/30 cm	☀	light pink	July to Aug.	well drained	Grown for cut or everlasting dried flowers. Foliage forms basal rosette of leaves.
GLOBE THISTLE <i>Echinops ritro</i>	48/24 in 120/60 cm	☀	bluish- purple	June to Sept.	well drained	Globular blooms for cut & dried flowers. Tall thistle-like plant for back of the border.

☀ = part sun ● = shade ☀☀ = sun

Perennials

Name	Height/ Spread	Sun/ Shade	Flower Colour	Bloom Time	Soil Moisture	Features/Uses
GOATSB Beard <i>Arunacus dioicus</i>	48/56 in 120/90 cm	☉●	creamy white	June to July	moist soil	Large plant, lacy leaves. Good at waterside.
GOATSB Beard-Dwarf Korean <i>Arunacus aethusifolius</i>	12/12 in 30/30 cm	☉●	white	June to July	moist soil	Beautiful beside a water garden.
GOLDENROD <i>Solidago</i>	36/12 in 90/30 cm	☉☼	gold- yellow	Aug.	well drained	Cultivated native wild flower. Golden-yellow flower plumes.
LOOSESTRIFE – GOOSENECK <i>Lysimachia clethroides</i>	36/36 in 90/90 cm	☉☼	white	July to Aug.	moist soil	Flower spikes bend like a gooseneck. Foliage has good fall color.
GRASS-BLUE FESCUE <i>Festuca glauca</i>	12/12 in 30/30 cm	☼	tan	May to June	well drained	Clump forming with fine textured leaves.
GRASS-BLUE OAT <i>Helictotrichon sempervirens</i>	36/24 in 90/60 cm	☼	tan	May to July	well drained	Round clump of intense blue leaves. Evergreen cool-season grass.
GRASS-BULBOUS OAT <i>Arrhenatherum bulbosum</i>	18/12 in 45/30 cm	☼	tan	June	well drained	Clumps of cream & green striped leaves. Combines well with bulbs in spring.
GRASS-KARL FOERSTER <i>Calamagrostis 'Karl Foerster'</i>	42/24 in 100/60 cm	☼	gold	June to Sept.	well drained	Boldly striped foliage in white and green. Perennial Plant of the Year 2001.
GRASS-RED SWITCH <i>Panicum virgatum</i>	36/24 in 90/60 cm	☼	white	July to Aug.	well drained	Airy flowers turn into red seed heads. Outstanding orange fall foliage color.
GRASS-RIBBON <i>Phalaris arundinacea</i>	36/24 in 90/60 cm	☼	tan	June to July	moist & well drained	Spreading clumps striped with various colors. Hardy groundcover but not in border.
HELENIUM <i>Helenium autumnale</i>	48/24 in 120/60 cm	☼	yellow, red	July to Aug.	well drained	Bright daisy-like flowers excellent for cutting. Moisture loving plant for the summer border.
HENS AND CHICKS <i>Sempervivum x hybrids</i>	6/12 in 15/30 cm	☼	pink, red	June to Aug.	well drained	Succulents with evergreen rosettes of leaves. Useful for edging & rock gardens.
HOLLYHOCKS <i>Alcea rosea</i>	84/18 in 200/45 cm	☼	mixed	July to Aug.	well drained	Old-fashioned favorite biennial reseeds itself. Best in back of border. Large blooms available in double or single.
HOSTA <i>Hosta var.</i>		☉●	lilac	July	moist & well drained	Avocado, Rainforest Sunrise, Great Arrival, First Frost, Dust Devil, Summer Breeze, Lakeside Black Satin, Calypso, Fragrant Dream are just a few.
IBERIS CANDYTUFT <i>Iberis sempervirens</i>	10/36 in 25/90 cm	☉●☼	white	May to June	well drained	Evergreen foliage forms compact ground cover. Good for rock gardens or front of border.
IRIS-ARTIC <i>Iris setosa</i>	8/12 in 20/30 cm	☼	lavender	May to June	well drained	Compact clump with narrow leaves. Hardy species for edging border.
IRIS-DWARF BEARDED <i>Iris pumila</i>	8/12 in 20/30 cm	☼	purple, pink, white, yel- low	May to June	well drained	Old-fashioned favorite in showy display. Available in separate colors & named varieties. Sold as bulbs in August.
IRIS-GERMAN BEARDED <i>Iris germanica</i>	30/18 in 75/45 cm	☼	purple, pink, yellow, bronze	May to June	well drained	Old-fashioned favorite in showy display. Available in separate colors & named varieties.
IRIS-SIBERIAN <i>Iris sibirica</i>	36/24 in 90/60 cm	☼	purple, white	May to June	well drained	Grassy leaves look good all summer. Delicate looking flowers for cutting.
IRISH MOSS <i>Sagina subulata</i>	2/12 in 5/30 cm	●☼	white	May to June	moist & well drained	Creeping moss-like ground cover. Good between paving stones or in rock garden.
SCOTCH MOSS <i>Sagina subulata 'Aurea'</i>	2/12 in 5/30 cm	●☼	white	May to June	moist & well drained	Tiny white, star-like flowers.
JACOB'S LADDER <i>Polemonium caeruleum</i>	36/12 in 90/30 cm	●☼	bluish white	May to July	moist soil	Bell-like bluish flowers. Tall perennial for a shady border.

Perennials

Name	Height/ Spread	Sun/ Shade	Flower Colour	Bloom Time	Soil Moisture	Features/Uses
JOE PYE WEED <i>Eupatorium maculatum</i>	7/3 ft 2/1 m	☀️	purple	Aug. to Sept.	moist soil	Large plant with purple flower heads. Attracts butterflies. Try "Chocolate".
KINNIKINICK <i>Bearberry Arctostaphylos uva-ursi</i>	6/6 in 15/15 cm	●️	light pink	May to June	moist acidic	Native evergreen ground cover. Low growing plant for acid area under spruce.
LADY'S MANTLE <i>Alchemilla mollis 'Thriller'</i>	12/24 in 30/60 cm	●️	yellow, green	June to July	well drained	Scalloped leaves for edging border. Sprays of lowers used in cut arrangements.
LAMB'S EAR <i>Stachys byzantina</i>	18/12 in 45/30 cm	●️	pink	June	well drained	Spreading mat of silver woolly leaves. Drought tolerant edging plant or ground cover.
LAMIUM <i>Lamium maculatum</i>	12/12 in 30/30 cm	●️	pink, white	May to Sept.	well drained	Attractive groundcover with variegated foliage.
LARGE THRIFT <i>Armeria pseudarneria</i>	24/12 in 60/30 cm	☀️	white, red	June to Aug.	well drained	Taller border strain with pink flowers.
LAVENDER-MUNSTEAD <i>Lavandula angustifolia</i>	16/24 in 40/60 cm	☀️	pink, purple	June to Aug.	well drained	Fragrant flower spikes & foliage. Suitable for the herb garden.
LEOPARD'S BANE <i>Doronicum</i>	16/12 in 40/30 cm	☀️●️	yellow	May to June	moist & well drained	Attractive heart-shaped leaves. Showy daisy-like flowers are good for cutting.
LEWISIA <i>Lewisia cotyledon</i>	12/6 in 30/15 cm	☀️	pink	May to July	well drained	Unique alpine rockery plant. Evergreen rosette of fleshy foliage.
LIGULARIA <i>Ligularia 'Desdemona'</i>	48/18 in 120/45 cm	☀️●️	orange	June to July	moist soil	Huge, rounded, purple leaves. Tall spikes of orange flowers.
LIGULARIA <i>Ligularia dentata 'Othello'</i>	48/18 in 120/45 cm	☀️●️	orange	June to July	moist soil	Useful for back of border.
LIGULARIA 'LITTLE ROCKET' <i>Ligularia stenocephala</i>	6/3 ft 200/90 cm	☀️●️	yellow	June to July	moist soil	Large rounded, toothed leaves. Tall background plant with yellow spikes.
LILY-ASIATIC <i>Lillium x hybrida</i>	48/12 in 120/30 cm	☀️●️	wide range	June to July	well drained	Hardy & easy to grow. Excellent long lasting cut flower.
LILY-ORIENTAL <i>Lillium x hybrids</i>	72/18 in 200/45 cm	☀️	pink, red, white	Aug. to Sept.	well drained	Late blooming, fragrant, star-shaped flowers.
LILY-TIGER <i>Lilium lancifolium</i>	60/18 in 150/45 cm	☀️	orange, red, yellow, pink	June to July	well drained	Old-fashioned favorite. Superb strong stemmed cut flower.
LILY-OF-THE-VALLEY <i>Convallaria majalis</i>	6/12 in 15/30 cm	●️	white	May to June	well drained	Old fashioned, fragrant, bell-shaped flowers. Good ground cover for shady areas.
LUNGWORT <i>Pulmonaria species</i>	18/12 in 45/30 cm	☀️●️	various blue	April to May	moist soil	Attractive spotted leaves. Good for mass plantings as ground cover.
LUPINE <i>Lupinus x 'Russell Hybrid'</i>	36/24 in 90/60 cm	☀️	purple, pink, yellow	June to Aug.	well drained	Tall spikes of flowers are good for cutting. Old-fashioned favorite perennial.
LUPINE <i>Lupinus x 'Gallery Series'</i>	36/24 in 90/60 cm	☀️	purple, pink, yellow	June to Aug.	well drained	Tall spikes of flowers are good for cutting. Old-fashioned favorite perennial.
MALLOW <i>Sidalcea malviflora x cultorum</i>	36/18 in 90/45 cm	☀️	pink	June to Aug.	well drained	Elegant spikes of satiny flowers for cutting. Party Girl is a mixture of various pink shades.
MALTESE CROSS <i>Lychnis chalcidonia</i>	48/12 in 120/30 cm	☀️	red	June to Aug.	well drained	Old fashioned, long-lived, hardy plant. Red flower clusters for cutting or in border.
MARGUERITE DAISY <i>Anthemis sancti-johannis</i>	18/36 in 45/90 cm	☀️	yellow, orange	June to Aug.	well drained	Hardy, showy member of the daisy family. Excellent for cutting. Drought tolerant.
MARGUERITE DAISY <i>Anthemis tinetoria</i>	18/36 in 45/90 cm	☀️	yellow, orange	June to Aug.	well drained	Hardy, showy member of the daisy family. Excellent for cutting. Drought tolerant.
MARSH MARIGOLD <i>Caltha palustris</i>	12/12 in 30/30 cm	☀️●️	yellow	May	moist soil	Buttercup flowers, heart shaped leaves. Excellent waterside plant.

Perennials

Name	Height/ Spread	Sun/ Shade	Flower Colour	Bloom Time	Soil Moisture	Features/Uses
MASTERWORT <i>Astrantia species</i>	24/18 in 60/45 cm	☉●	pink, red, white	June to Aug.	moist soil	Flowers look like Queen Anne's Lace. Use in shaded, moist area or as cut flower.
MAYNIGHT SALVIA <i>Salvia nemerosa 'May Night'</i>	24/24 in 60/60 cm	☼	Indigo violet	May to July	well drained	Perennial Plant of the Year 1997. Aromatic leaves and spike-like flowers.
MEADOW PHLOX <i>Phlox maculata</i>	36/24 in 90/60 cm	☼	pink, white	June to Aug.	moist & well drained	Spring follower evergreen ground cover. Fragrant flowers good for cutting.
MEADOWRUE <i>Thalictrum aquilegifolium</i>	36/24 in 90/60 cm	☉☼	mauve, white	May to June	moist soil	Cut leaves closely resemble Columbine. Fluffy flower sprays are used for cutting.
MEADOWSWEET <i>Filipendula rubra 'Venusta'</i>	6/4 ft 1.8/1.2 m	☉☼	pink	Aug. to Sept.	moist soil	Large flowers on this bold accent plant. Tall plumed for the back of the border.
MISS WILLMOTT POTENTILLA <i>Potentilla nepalensis</i>	12/12 in 30/30 cm	☼	red-pink	June to Sept.	well drained	Melon- red flowers with darker pink centre. Shear plants back after first flush of flowers.
MONKSHOOD <i>Aconitum napellus</i>	54/24 in 135/60 cm	☉☼	purple, pink	July to Aug.	moist soil	Tall sturdy border perennial. Showy flower spikes good for cut flowers.
MORDEN MUMS <i>Chrysanthemum morifolium</i>	12/8 in 30/20 cm	☼	yellow, bronze	Aug. to Sept.	well drained	Hardier mums produce fall flowers.
OBEDIENT PLANT <i>Physostegia virginiana</i>	48/24 in 120/60 cm	☉☼	pink, white	July to Sept.	moist soil	Tubular flower spikes - great cut flowers. Background plant also variegated form.
PACHISTIMA <i>Pachistima canbyi</i>	12/18 in 30/45 cm	☉			acidic	Low growing, broadleaf evergreen. Ground cover for shady area.
PAINTED DAISY <i>Tanacetum coccineum .</i>	30/18 in 75/45 cm	☼	rose-pink	June to July	well drained	Old-fashioned cut flower with ferny foliage. Dead head regularly to increase flowering.
PASQUE FLOWER <i>Pulsatilla vulgaris</i>	12/12 in 30/30 cm	☼	purple, red	April to May	well drained	Early bloomer with crocus type blooms.
PEACHLEAF BELLFLOWER <i>Campanula persicifolia</i>	36/18 in 90/45 cm	☉☼	purple, white	June to Aug.	well drained	Showy, taller bellflower blooms longer. Strong stems good for cut flowers.
PERENNIAL FLAX <i>Linum perenne</i>	18/12 in 45/30 cm	☼	blue, white	May to Aug.	well drained	Linear leaves with continual blooms.
PEONY <i>Paeonia hybrids</i>	36/36 in 90/90 cm	☼	pink, red, white	June	well drained	Old-fashioned favorite with double flowers. Longest lived & largest flowering perennial.
PEONY-FERNLEAF <i>Paeonia tenuifolia 'Plena'</i>	18/12 in 45/30 cm	☼	red	June	well drained	Finely cut leaves unlike others. Delicate double flowers.
PERENNIAL SWEET PEA <i>Lathyrus latifolius</i>	8/1 ft 240/30 cm	☼	pink-purple	June to Sept.	well drained	Native wildflower used as dried everlasting. Good fresh cut flower.
PERSIAN CORNFLOWER <i>Centaurea delbata</i>	30/24 in 75/60 cm	☼	pink-purple	June to Aug.	well drained	Sturdy perennial for the border. Thistle-like blooms for cut flowers.
PHLOX-CREEPING OR MOSS <i>Phlox douglasii</i>	5/18 in 12/45 cm	☼	pink, red, white, lavender	May	well drained	Woody shrub with spectacular flowers. Excellent edging & rockery plant.
PHLOX-CREEPING OR MOSS <i>Phlox subulata</i>	5/18 in 12/45 cm	☼	pink, red, white, lavender	June	well drained	Woody shrub with spectacular flowers. Excellent edging & rockery plant.
PINCUSHION FLOWER <i>Scabiosa caucasica</i>	30/18 in 75/45 cm	☼	white	June to Aug.	well drained	Ideal for edging along a shady border. Strong stems for long lasting cut flowers.
PINCUSHION FLOWER <i>Scabiosa columbaria</i>	18/12 in 45/30 cm	☼	lavender blue	June to Aug.	well drained	Large globe- shaped continuous flowers. Butterfly Blue is the Perennial of the Year for 2000.
POPPY-ALPINE <i>Papaver alpinum</i>	8/6 in 20/15 cm	☼	mixed	May to Aug.	well drained	Dainty poppies with lacy leaves for the rockery. Yellow, orange, pink & white flowers.
POPPY-BLUE HIMALAYAN <i>Meconopsis sp.</i>	48/24 in 120/60 cm	☉●	blue	July	moist soil	Needs a moist location. Allow to self-seed.
POPPY-ICELAND <i>Papaver nudicaule</i>	18/12 in 45/30 cm	●☼	mixed	May to Sept.	well drained	Papery yellow, orange, pink & white flowers! Re-seeds readily.
POPPY-ORIENTAL <i>Papaver orientale</i>	36/24 in 90/60 cm	☼	pink, red, orange	May to July	well drained	Showy huge flowers with hairy foliage. Excellent border perennial or cut flower.

Perennials

Name	Height/Spread	Sun/Shade	Flower Colour	Bloom Time	Soil Moisture	Features/Uses
POPPY-PLUME <i>Macleaya cordata</i>	6/2 ft 200/60 cm	☀️⚡	cream	July moist	soil	Colorful foliage with cream flower plumes. Unique giant background plant.
POTENTILLA <i>Potentilla</i>	4/12 in 10/30 cm	⚡	yellow	May to June	well drained	Low non-spreading alpine rockery plant. Buttercup flowers on compact mound.
RHUBARB <i>Rheum x hybridum</i>	3/3 ft 1/1 m	⚡	white	May to Sept.	well drained	Hardy vegetable with large leaves.
ROCKCRESS <i>Aubrieta hybrids</i>	6/24 in 15/60 cm	⚡	pink, red, purple	May to June	well drained	Popular rock garden plant. Foliage cascades over banks and walls.
RODGERSIA <i>Rodgersia species</i>	4/3 ft 200/90 cm	⚡	pink, white	July	moist soil	Large leaves; good as tall waterside plant. Misty plumes of flowers similar to Astilbe.
RUSSIAN SAGE <i>Perovskia atriplicifolia</i>	4/2 ft 120/60 cm	⚡	blue-violet	July to Sept.	well drained	Long bloomers with grey foliage. Perennial plant of the year in 1995.
SALVIA <i>Salvia nemerosa</i>	24/24 in 60/60 cm	⚡	pink, violet	June to Aug.	well drained	Scented spikes of flowers. Drought tolerant.
SEA HOLLY <i>Eryngium species</i>	24/12 in 60/60 cm	⚡	blue	June to Aug.	well drained	Prickly flowers good for cutting and drying. Drought tolerant of hot dry sites.
SEA LAVENDER <i>Limonium latifolium</i>	30/24 in 75/60 cm	⚡	lavender	June to Aug.	well drained	Grown for cut or everlasting dried flowers. Drought-tolerant border plant.
SEDUM <i>Sedum spectabile</i>	24/24 in 60/60 cm	⚡	pink	Aug. to Sept.	well drained	Succulent plants with upright growth habit. Flowers resemble broccoli.
SHASTA DAISY <i>Leucanthemum x superbum</i>	24/18 in 60/45 cm	☀️⚡	white	June to Sept.	well drained	White Daisies with yellow centers good for cutting.
SHOOTING STAR <i>Dodecatheon meadia</i>	12/6 in 30/15 cm	☀️	pink	May to June	moist soil	Delicate flowers from a flat rosette of leaves. Mass planting in shady border.
SILVER MOUND <i>Artemisia schmidtiana</i>	12/18 in 30/45 cm	⚡	foliage	none	well drained	One of the most popular perennials. Compact mound of feathery foliage.
SNOW-IN-SUMMER <i>Cerastium tomentosum</i>	12/24 in 30/60 cm	⚡	white	May to June	well drained	Popular spreading plant. Drought tolerant. Great ground cover for full sunlight.
SNOW-on-the-MOUNTAIN <i>Aegopodium podagraria</i>	12/24 in 30/60 cm	☀️●⚡	green-white	July to Aug.	moist soil	Variiegated foliage. Vigorous ground cover. Too invasive for the garden or border.
SOAPWORT <i>Saponaria ocyroides</i>	8/18 in 20/45 cm	⚡	pink	May to June	well drained	Vigorous trailing rockery or edging plant. Useful for cascading over rocks & slopes.
SOLOMON'S SEAL <i>Polygonatum species</i>	24/12 in 60/30 cm	☀️●	white	May to June	moist soil	Delicate bell flowers hang from stems.
SPIDERWORT <i>Tradescantia x andersoniana</i>	24/24 in 60/60 cm	☀️●	various	June to Aug.	moist	Grassy foliage with showy triangular flowers. Plant in diagonal drifts in the border.
SPIKE SPEEDWELL <i>Veronica spicata</i>	24/12 in 60/30 cm	⚡	blue, pink	June to Aug.	well drained	Border plant with long-lasting flower spikes.
STEMLESS GENTIAN <i>Gentiana acaulis</i>	4/12 in 10/30 cm	⚡	true blue	May	moist soil	Low growing creeping mat good for rockery. Light blue flowers in springtime.
SUNNY BORDER BLUE VERONICA 'Sunny Border Blue'	24/12 in 60/30 cm	⚡	blue	June to Sept.	well drained	1993 Perennial of the Year. Long blooming spikes for cut flowers.
SWEET ROCKET <i>Hesperis matronalis</i>	36/12 in 90/30 cm	☀️⚡	purple	June to July	well drained	Fragrant flowers resemble Summer Phlox. Old-fashioned garden plant for the border.
SWEET WILLIAM <i>Dianthus barbatus</i>	24/12 in 90/30 cm	⚡	red, pink, white	June to July	well drained	Classic cottage, self-seeding, biennial plant. Dead heading increases cut flowers.
SWEET WOODRUFF <i>Galium odoratum</i>	8/24 in 20/60 cm	☀️●	white	May to July	moist soil	Delicate leaves with aromatic flower clusters. Excellent ground cover for moist shady area.
THRIFT <i>Armeria maritima</i>	6/12 in 15/30 cm	⚡	pink, red, white	May to July	well drained	Excellent evergreen with grassy leaves. Suitable rock garden plants. Also called 'Sea Pink'.
CREEPING THYME <i>Thymus praecox</i>	6/12 in 15/30 cm	⚡	white	June to July	well drained	Creeping thyme is a good ground cover.

Perennials

Name	Height/ Spread	Sun/ Shade	Flower Colour	Bloom Time	Soil Moisture	Features/Uses
WOODY THYME <i>Thymus pseudolanuginosus</i>	6/12 in 15/30 cm	☼	pink	June to July	well drained	Woolly thyme forms a vigorous mat.
MOTHER OF THYME <i>Thymus serpyllum</i>	6/12 in 15/30 cm	☼	purple	June to July	well drained	Mother-of-thyme is much loved.
TROLLIUS <i>Trollius x cultorum</i>	36/24 in 90/60 cm	☼●☼	orange, yellow	May to June	moist soil	Large round, buttercup flowers & cut leaves. Popular in shady border or as cut flowers.
VINCA <i>Vinca minor</i>	6/18 in 15/45 cm	☼●	violet, white	May to Sept.	well drained	Evergreen groundcover with glossy leaves.
VIOLA <i>Viola cornuta</i>	8/12 in 20/30 cm	☼☼	various	May to Sept.	moist soil	Excellent for edging or rock gardens. Self seeder.
VIOLA-LABRADOR VIOLET <i>Viola labradorica</i>	6/6 in 15/15 cm	☼	purple	May to Sept.	moist soil	Purple leaves and flowers. Shorter rock garden violet.
YARROW <i>Achillea hybrids</i>	30/24 in 70/60 cm	☼	white	June to Sept.	well drained	Good for cutting fresh or dried flowers. Good for mass planting in the border.
LOOSESTRIFE – YELLOW <i>Lysimachia punctata</i>	36/24 in 90/60 cm	☼☼	yellow	June to Aug.	well drained	Upright bushy clumps form a large patch. Star-shaped flowers appear in leafy spikes.
YUCCA <i>Yucca glauca</i>	24/18 in 60/45 cm	☼	white	July	well drained	Succulent, evergreen, stiff leaves. Native. Extremely drought tolerant.
WILD GINGER <i>Asarum canadense</i>	6/8 in 15/20 cm	●	foliage	none	moist soil	Lush green ground cover plant.
BLAZING STAR <i>Liatrus spicata</i> 'Floristan'	36/18 in 90/45 cm	☼	white	July to Sept.	well drained	Long lasting spikes good as cut flower. Beautiful border plant also called Gay Feather.
CAT MINT <i>Nepeta faassennii</i> 'Walkers Low'	10/20 in 25/48 cm	☼	Purple	July to Aug.	well drained	Perennial plant of the year. Best flower display.
FALSE SUNFLOWER <i>Heliopsis helianthoides</i> 'Lorraine Sunshine'	48/24 in 120/60 cm	☼	yellow	July to Sept.	well drained	Variiegated foliage.
FALSE SUNFLOWER <i>Heliopsis helianthoides</i> 'Summer Nights'	48/24 in 120/60 cm	☼	yellow w/ red centre	July to Sept.	well drained	Large, long blooming, daisy-like flowers. Strong sturdy stems are good for cutting.



bowseed

**June is
Perennial
Month!**

**Perennials -
BUY 2 GET 1 FREE**

Of equal or lesser value.

Valid for the week of

June 7 - 13, 2010

Limit One Coupon Per Customer/ Per
Purchase While Quantities Last. Coupon
must be presented at time of purchase.

Roses

Variety	Series	Height	Flower Colour	Fragrance	Features
ADELAIDE HOODLESS	Parkland	3 ft 1 m	bright red	light	Clusters of bright red continual flowers; old-fashioned favorite rose.
ALEXANDER MCKENZIE	Explorer	6 ft 1.7 m	reddish pink	strong	Tall rose with continual fragrant blooms; blooms similar to tea roses.
BLANC DE COUBERT	Rugosa	5 ft 1.5 m	clear white	strong	White fragrant flowers; continual blooming.
EMILY CARR	Canadian Artist	3 ft 1 m	red	light	Spreading growth habit; continual blooming; blooms from spring until fall; climbing.
CHAMPLAIN SAMUEL	Explorer	4 ft 1.3 m	dark red	medium	The best red of the Explorer Series roses; continual blooming from summer to frost.
CHARLES ALBANEL	Explorer	2 ft 0.6 m	medium pink	medium	Ground cover rose that is hardier than Flower Carpet; repeat blooming from summer to frost.
FELIX LECLERC	Canadian Artist	3-6 ft 1-1.5 m	reddish pink	light	Continual blooming; glossy green foliage; bushy plant.
CPT. SAMUEL HOLLAND	Explorer	6 ft 2 m	red	light	Trailing growth habit; continual blooming resistant to powdery mildew and black spot.
CUTHBERT GRANT	Parkland	3 ft 1 m	crimson red	light	Largest flowers of any Parkland or Explorer rose; old-fashioned favorite rose; repeat blooms.
DAVID THOMPSON	Explorer	3 ft 1 m	deep pink	strong	Continual fragrant blooms; no rose hips.
DE MONTARVILLE	Explorer	3 ft 1 m	medium pink	medium/light	Continual blooming; tight red buds open to a medium pink.
F.J. GROOTENDORST	Rugosa	5 ft 1.5 m	medium red	light	Carnation-like red flowers; wrinkled foliage; continual blooming.
FRONTENAC	Explorer	3.5 ft 1.3 m	deep pink	light	Flowers in clusters of up to eight; continual blooming; resistant to powdery mildew and black spot.
GEORGE VANCOUVER	Explorer	3 ft 1 m	soft red	medium	Abundance of soft red flowers in clusters; flowers in June and repeats all season.
GOLDEN WINGS	Shrub Rose	3 ft 1 m	golden yellow	medium	Golden yellow flowers; repeat through season; recent introduction.
HANSA	Rugosa	5 ft 1.5 m	reddish purple	strong	Hardy popular fragrant rose; repeat blooms; unique reddish-violet flowers for a shrub rose.
HARRISON YELLOW	Rosa foetida	5 ft 1.5 m	sulfur yellow	medium	One-time mass of blooms; substitute for Persian Yellow Rose.
HENRY HUDSON	Explorer	2 ft 0.6 m	pinkish white	light	Pink flower buds open up into white flowers; repeat blooming from summer to frost.
HENRY KELSEY	Explorer	7 ft 2 m	reddish pink	medium	Tall trailing rose may be trained as a climber. Repeat blooming from summer to frost.
HOPE FOR HUMANITY	Parkland	3 ft 1 m	dark red	light	Repeat blooms; dark red semi-double blooms; commemorates 100th Anniversary Canadian Red Cross.
HUNTER	Rugosa	3 ft 1 m	red	medium	Brilliant red, fully double blooms; repeat; clean, dark-green glossy foliage.
J.P. CONNELL	Explorer	4.5 ft 1.5 m	pale yellow	light	Vigorous, upright shrub; repeat; first yellow in the Explorer Series.
JENS MUNK	Explorer	4 ft 1.3 m	medium pink	strong	Continual fragrant blooms.
JOHN CABOT	Explorer	7 ft 2 m	medium pink	strong	Tall climbing fragrant rose; repeat blooms all season.
JOHN DAVIS	Explorer	7 ft 2 m	medium pink	strong	Tall rambling rose may be trained as a climber; continual blooms all season.
JOHN FRANKLIN	Explorer	3 ft 1 m	medium red	medium	Continual blooms all season; disease-resistant foliage.
LAMBERT CLOSSE	Explorer	3 ft 1 m	pale pink	strong	Extremely healthy shrub; blooms similar to tea roses; repeat bloomer.

Roses

Variety	Series	Height	Flower Colour	Fragrance	Features
LINDA CAMPBELL	Explorer	5-6 ft 2 m	red with yellow	light	Cross between a miniature and a rugosa; long arching canes; repeat bloomer.
LOUIS JOLLIET	Explorer	4-5 ft 1.5 m	medium pink	light	Continuous blooms from summer to frost; disease resistant.
MARTIN FROBISHER	Explorer	5 ft 1.5 m	light pink	strong	First introduced Explorer Series rose; continual fragrant blooms.
MORDEN AMORETTE	Parkland	3 ft 1 m	deep pink	light to medium	Continuous blooms from summer to frost.
MORDEN BLUSH	Parkland	3-4 ft 1.25 m	light pink	medium	Repeat hybrid tea-type flowers; low growing rose; longest blooming period of any shrub rose.
MORDEN CARDINETTE	Parkland	2 ft 0.6 m	cardinal red	light	Low growing rose; ever-blooming flowers.
MORDEN CENTENNIAL	Parkland	3 ft 1 m	medium pink	medium	Plentiful production of hot pink flowers; repeat bloomer; named after centennial commemorating Morden.
MORDEN FIREGLOW	Parkland	2 ft 0.6 m	scarlet red	light	Unique scarlet red flowers repeat all season; low growing rose.
MORDEN RUBY	Parkland	3 ft 1 m	ruby red	light	Clusters of ruby red flowers repeat all season; a real jewel in the Morden series.
MORDEN SUNRISE	Parkland	3 ft 1 m	orange blend	medium	Continuous blooms from summer to frost; citrus fragrance.
NEARLY WILD	Shrub Rose	3 ft 1 m	medium pink	medium	Lots of color; ever blooming; proven cold weather performer.
PERSIAN YELLOW	Rosa foetida	6 ft 1.7 m	deep yellow	strong	Tall popular rose with deep yellow flowers; one time profusion of blooms.
PINK GROOTENDORST	Rugosa	5 ft 1.5 m	medium pink	light	Carnation-like, pink flowers; wrinkled foliage.
PRAIRIE DAWN	Shrub Rose	5 ft 1.5 m	medium pink	light	Continual blooms all season; glossy foliage.
PRAIRIE JOY	Shrub Rose	4 ft 1.3 m	medium pink	medium	Hedge-type rose for screening; repeats all season; dense foliage displays disease resistance.
RED LEAF	Rosa rubrifolia	5 ft 1.5 m	light pink	medium	Reddish-purple, popular foliage; red hips and branches; flowers in June.
ROYAL EDWARD	Explorer	20 in 50 cm	deep pink	medium	Low growing rose; repeat blooms all season; disease resistant.
SIMON FRASER	Explorer	2 ft 0.6 m	medium pink	medium	Low growing rose; continual blooms all season.
SIR THOMAS LIPTON	Rugosa	7 ft 2 m	pure white	strong	Tall rose with pure white, large fragrant flowers; leathery foliage; repeat blooms all season.
THERESA BUGNET	Rugosa	6 ft 1.7 m	medium pink	medium	Tall rose with large flowers; repeat all season; old-fashioned favorite rose.
TOPAZ JEWEL	Rugosa	5 ft 1.5 m	butter yellow	medium	Butter to cream yellow flowers; first ever blooming yellow rugosa rose.
WILLIAM BAFFIN	Explorer	7 ft 2 m	medium pink	light	Tall climbing rose; blooms repeat all season.
WILLIAM BOOTH	Explorer	4-5 ft 1.5 m	pink	light	Disease resistant; continuous blooms from summer to frost.
WINNIPEG PARKS	Parkland	2 ft 0.6 m	deep pink	medium	Popular hardy, low growing rose; ever blooming.

CRAFT & MARKET SALES

SATURDAY, NOV. 13, 20, 27 & DEC. 11, 2010

Admission with a non-perishable item for the food bank.

New to the Tree Lot for 2010

Small Fruits

Chester Thornless Blackberry - Rubus "Chester Thornless"

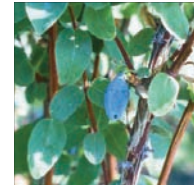
Chester is the hardiest thornless Blackberry. They bear large, firm, sweet fruit starting in August. High quality and high yielding variety. Very resistant to cane blight. Fruit is borne on previous year's growth. Cut canes to the ground after they are done bearing. Height: 4-5ft/125-150m. Spread: 5-6ft/1.5-2m. Zone 4



Tundra Honeyberry – Lonicera caerulea edulis "Tundra"

Recommended for commercial growing for easy processing. No suckering, no thorns, few pests and very little pruning necessary. Needs 2 or more varieties to cross-pollinate.

Height: 4-5ft/125-150m. SPREAD: 4-5FT/1.25-1.5m. Zone 3



Prairie Star Grape – Vitis "Prairie Star"

Prairie Star is a very cold-tolerant white wine variety. It is also disease resistant. Generally ripening in mid-season, the fruit develops excellent sugar and acidity for white winemaking as the grape matures. Typically, wine made from Prairie Star is quite neutral, and is probably best used in blends, adding body and finish to thinner white wines.

Height: 4-5ft/1.25-1.5m. Spread: 5-6ft/1.5-2m. Zone 3



TEA ROSES!

Buy 1 Get 1 FREE

(of equal or lesser value)

Present this coupon on any Wednesday in July 2010

Limit One Coupon Per Customer/ Per Purchase

While Quantities Last

Garth Olson

Phone: 403-343-3020

Cell: 403-340-9110

Fax: 403-340-3085

gartholson@shaw.ca

www.gartholson.com

Lifetime Achievement Award

RE/MAX[®]

Real Estate Central Alberta

4440 - 49 Avenue, Red Deer, AB T4N 3W6

Each Office Independently Owned & Operated



Small Fruit

Name	Fruit Colour	Height / Spread	Sun / Shade	Fruit Features / Uses
BLUEBERRIES				
NORTHCOUNTRY	sky blue	3/3 ft (0.9-0.9 m)	☀️ ⚙️	Mild, sweet, sky-blue fruit.
PATRIOT	medium blue	3/3 ft (0.9-0.9 m)	☀️ ⚙️	Large berries with high yield and excellent flavor.
NORTHLAND	dark blue	4/4 ft (1.2-1.2 m)	☀️ ⚙️	Wild berry tasting, dark blue fruit.
NORTHSKY	sky blue	2/2 ft (0.6-0.6 m)	☀️ ⚙️	Blueberry with sweet, sky-blue fruit.
POLARIS	light blue	3/3 ft (0.9-0.9 m)	☀️ ⚙️	Best ripening in northern gardens; new variety.
NORTHBLUE	dark blue	3/3 ft (0.9-0.9 m)	☀️ ⚙️	Dark blue, sweet flavored fruit.
CHERRIES				
NANKING	red	10/10 ft (3-3 m)	⚙️	Edible cherries great for jelly.
JULIET	cherry red	6/6ft (2-2m)	●	Excellent fresh eating.
CARMINE JEWEL	cherry red	6/6ft (2-2m)	●	Edible fruit good for jelly and canning.
LEE'S BLACK CHERRY	dark burgundy	7/7 ft (2.1-2.1 m)	⚙️	Great for jams and jellies.
CURRENTS				
BLACK	black	3/3 ft (0.9-0.9 m)	☀️ ⚙️	Abundant black fruit for preserves.
RED LAKE	red	3/3 ft (0.9-0.9 m)	☀️ ⚙️	Plentiful fruit produced for jelly.
GOOSEBERRIES				
PIXWELL	green	3/3 ft (0.9-0.9 m)	☀️ ⚙️	Productive fruit producer for preserves.
HINNONMAEKI RED	red	3/3 ft (0.9-0.9 m)	☀️ ⚙️	Tart red, juicy fruit for preserves.
GRAPES				
BETA	blue/black		☀️ ⚙️	Excellent for juice or jelly, vigorous.
VALIANT	blue		☀️ ⚙️	Hardest grape for the prairies used for jelly.
HONEYBERRY				
BERRY BLUE/BLUE BELL /TUNDRA/BOREALIS	blue	4.5/4.5 ft (2-2m)	☀️ ⚙️	Dark blue fruit, flavors like wild blueberries, you need 2 varieties for pollination.
RASPBERRIES				
BOYNE	red	5/5 ft (1.5-1.5 m)	⚙️	Hardy, heavy producer of sweet red berries.
HERITAGE	red	5/5 ft (1.5-1.5 m)	⚙️	Everbearing producer in September.
FALL GOLD	gold/yellow	5/5 ft (1.5-1.5 m)	⚙️	New everbearing variety with unique gold fruit.
SASKATOONS				
HONEYWOOD	purple	7/5 ft (2.1-1.5 m)	⚙️	Later large fruit for eating fresh or pies.
NORTHLINE	purple	7/5 ft (2.1-1.5 m)	⚙️	Productive fruit producer to eat fresh or pies.
PEMBINA	purple	10/7 ft (3- 2.1 m)	⚙️	Well-known variety with large fruit to eat.
REGENT	purple	7/5 ft (2.1-1.5 m)	⚙️	Sweet fruit is good for eating fresh or pies.
SMOKEY	purple	10/7 ft (2.1-1.5 m)	⚙️	High yielding variety with mild, sweet fruit.
THEISSEN	purple	10/5 ft (2.1-1.5 m)	⚙️	Large fruit is good for eating fresh or pies.

CHECK OUT OUR WEB SPECIALS!

Coupons available on line @ www.parklandgarden.ca

Shrubs

Variety	Height	Spread	Sunlight	Zone	Colour	Features
ARNOLD RED HONEYSUCKLE <i>Lonicera tatarica</i> 'Arnold Red'	10 ft 3 m	5 ft 1.5 m	☉ ☼	3	dark red	Dark red fruit follow dark red fragrant flowers. Berries attract birds.
AUTUMN MAGIC CHOKECHERRY <i>Aronia melanocarpa</i>	5 ft 1.6 m	3 ft 1 m	☼	3	white	Abundant edible black cherries attract birds in fall. Red fall color.
CENTENNIAL WEIGELA <i>Weigela florida</i> 'Centennial'	5 ft 1.6 m	5 ft 1.6 m	☼	3	pink	Pink tubular flowers in June and reblooms later. Suitable replacement for honeysuckle.
CHERRY PRINSEPIA <i>Prinsepia sinensis</i>	5 ft 1.5 m	3 ft 1 m	☼	2	yellow	Spiny hardy shrub for the Prairies with red fruit. Useful as an armed barrier plant.
CHOCKEBERRY <i>Aronia melanocarpa</i> 'Autum Majic'	5 ft 1.5 m	5 ft 1.5 m	☼	3	white	Purplish blackberries make this shrub outstanding in the fall.
COTONEASTER <i>Hedge or Peking</i> <i>Cotoneaster acutifolia</i>	7 ft 2 m	5 ft 1.5 m	☼	2	light pink	Most widely used hedge plant! Glossy green leaves turn red in fall. Available in spring and fall bare root or pot plant.
DOUBLEFLOWERING PLUM <i>Prunus triloba</i> 'Multiplex'	7 ft 2.3 m	5 ft 1.5 m	☼	3	pink	Emergence of flowers signifies spring arrival. Spectacular pink double flowers before leaves.
DWARF BROOM <i>Genista lydia</i>	2 ft 0.6 m	3 ft 1 m	☼	4	yellow	Fine textured sprawling shrub. Flowers in June. Profusion of flowers along unique green stems.
MINIGLOBE HONEYSUCKLE <i>Lonicera xylasteoides</i> 'Miniglobe'	3 ft 1 m	3 ft 1 m	☉ ☼	3	white	Miniature globe-shaped Honeysuckle. Compact foliage plant for foundation planting.
MINUET WEIGELA <i>Weigela florida</i> 'Minuet'	2 ft 60 cm	2 ft 60 cm	☉ ☼	3	dark pink	Slightly fragrant purplish-red tinted foliage on dark green.
NANKING CHERRY <i>Prunus tomentosa</i>	10 ft 3 m	7 ft 2 m	☼	2	light pink	Red edible cherries are great for jelly. Our most popular large flowering shrub.
NORTHERN GOLD FORSYTHIA <i>Forsythia ovata</i> 'Northern Gold'	5 ft 1.5 m	3 ft 1 m	☉ ☼	3	yellow	Profusion of yellow flowers early in spring. Harbinger of spring and earliest flowering shrub.
PURPLE LEAF SANDCHERRY <i>Prunus cistena</i>	7 ft 2.3 m	5 ft 1.6 m	☼	3	light pink	Spectacular purple foliage on this accent plant. Most popular shrub for color contrast.
ROSE DAPHNE <i>Daphne cneonrum</i>	1 ft 0.3 m	2 ft 0.6 m	☉ ☼	4	pink	Fragrant flowers first thing in spring. Suitable for area insulated by snow cover.
RUSSIAN ALMOND <i>Prunus tenella</i>	5 ft 1.6 m	5 ft 1.6 m	☼	3	pink	Plum-like, fuzzy almonds. Small shrub for mass planting.
RUSSIAN OLIVE <i>Elaeagnus angustifolia</i>	16 ft 5 m	13 ft 4 m	☼	3 - 4	yellow	Outstanding silvery foliage. Large multi-stemmed shrub or small specimen tree.
SEA BUCKTHORN <i>Hippophae rhamnoides</i>	13 ft 4 m	10 ft 3 m	☼	2	yellow	Thorny shrub with silver linear leaves, orange berries. Drought tolerant and hardier than Russian Olive.
SNOWBERRY <i>Symphoricarpos albus</i>	3 ft 1 m	3 ft 1 m	● ☼	2	pink	Native hardy, small shrub. White berries in winter attract wildlife.
WESTERN SAND CHERRY <i>Prunus besseyi</i>	3 ft 1 m	3 ft 1 m	☼	3	white	Olive-green leaves and black sour cherries. Sprawling shrub is used as late plum pollinator.
BARBERRY						
CHERRY BOMB BARBERRY <i>Berberis thunbergii</i> 'Monomb'	3 ft 1 m	3 ft 1 m	☼	3	n/a	Deep crimson red foliage on a rounded shrub.
ROSE GLOW BARBERRY <i>Berberis thunbergii</i> 'Rose Glow'	3 ft 1 m	3 ft 1 m	☼	3 n/a		Mottled pink-rose on burgundy foliage. This plant actually turns hot pink in the fall.
ROYAL BURGANDY BARBERRY <i>Berberis thunbergii</i> 'Gentry'	24 in 60 cm	3 ft 1 m	☼	3	n/a	Deep burgundy red foliage on arching stems.
RUBY CAROUSEL BARBERRY <i>Berberis thunbergii</i> 'Bailone'	3 ft 1 m	3 ft 1 m	☼	3	n/a	Beautiful red-purple leafed shrub selected for its low rounded uniform habit.
SUNSATON BARBERRY <i>Berberis thunbergii</i> 'Monny'	3 ft 1 m	3 ft 1 m	☼	3	n/a	Slow growing compact golden shrub, orange fall color.

Shrubs

Variety	Height	Spread	Sunlight	Zone	Colour	Features
CARAGANA						
COMMON CARAGANA <i>Caragana arborescens</i>	13 ft 4 m	7 ft 2 m	☉☼	2	yellow	Siberian pea-shrub. Drought tolerant. Excellent hedge, shelterbelt or windbreak.
FERNLEAF CARAGANA <i>Caragana arborescens 'Lorbergii'</i>	13 ft 4 m	10 ft 3 m	☉☼	2	yellow	Lacy leaves on this graceful plant. Yellow flowers in spring.
GLOBE CARAGANA <i>Caragana frutex 'Globosa'</i>	3 ft 1 m	3 ft 1 m	☉☼	2	yellow	Globe-shaped shrub that requires no pruning. One of the woody plants of year in 1996, 97 & 98.
PYGMY CARAGANA <i>Caragana pygmaea</i>	3 ft 1 m	5 ft 1.5 m	☉☼	2	yellow	Spiny shrub with spring flowers. Useful armed hedge plant for dry area.
SUTHERLAND CARAGANA <i>Caragana arborescens 'Sutherland'</i>	13 ft 4 m	5 ft 1.5 m	☉☼	2 y	ellow	Tall, columnar, accent plant. Also attractive in row plantings as a tall hedge.
WALKERS WEeping CARAGANA <i>Caragana arborescens 'Walker's'</i>	5 ft 1.5 m	3 ft 1 m	☉☼	2	yellow	Fine lacy foliage hangs from weeping branches. Graceful specimen plant for formal appearance.
WEeping CARAGANA <i>Caragana arborescens 'Pendula'</i>	7 ft 2 m	3 ft 1 m	☉☼	2 y	ellow	Weeping, grafted variety with oval leaflets. Yellow flowers in spring.
CURRANT						
ALPINE CURRANT <i>Ribes alpinum</i>	5 ft 1.5 m	5 ft 1.5 m	☉☼	2	green	Small green flowers and lobed leaves. Used for mass planting.
DOGWOOD						
BUDS YELLOW <i>Cornus alba 'Buds Yellow'</i>	7 ft 2 m	7 ft 2 m	☉☼	3	white	Yellow stems for winter color.
IVORY HALO DOGWOOD <i>Cornus alba 'Ivory Halo'</i>	5-7 ft 1.5-2.3m	5-7 ft 1.5-2.3 m	☉☼	3	white	Bright red stems and silver variegated leaves. Very compact and slow growing.
KELSEY DOGWOOD <i>Cornus sericea 'Kelseyi'</i>	2 ft 0.6 m	2 ft 0.6 m	☉☼	3	white	Dwarf selection of Red Osier Dogwood. Suitable ground cover for shaded, moist area.
KESSELRING DOGWOOD <i>Cornus alba 'Kesselringii'</i>	5 ft 1.5 m	5 ft 1.5 m	☉☼	3	white	Deep purple stems are outstanding in winter. Suitable shrub for shaded, moist area.
RED OSIER DOGWOOD <i>Cornus sericea stolonifera</i>	7 ft 2.3 m	5 ft 1.5 m	☉☼	3	white	Red stems for winter color. Native shrub spreads by stolons.
ELDER						
GOLDEN ELDER <i>Sambucus canadensis 'Aurea'</i>	7 ft 2.3 m	5 ft 1.5 m	☼	3	white	Golden yellow foliage color in summer and fall. Quick grower can be cut down to ground level.
GOLDEN PLUME ELDER <i>Sambucus 'Plumosa Aurea'</i>	7 ft 2.3 m	5 ft 1.5 m	☼	3	cream	Golden yellow, deeply serrated leaves. Flower clusters on new wood.
RED ELDER <i>Sambucus racemosa</i>	10 ft 3 m	7 ft 2.3 m	☼	3	cream	Sharply serrated green leaflets. Red fruit used for jelly and wine.
SUTHERLAND CUTLEAF ELDER <i>Sambucus racemosa 'Sutherland'</i>	7 ft 2.3 m	7 ft 2.3 m	☼	3	cream	Golden yellow dissected leaves. Foliage is a good color contrast.
EUONYMOUS						
BURNING BUSH - DWARF WINGED <i>Euonymus alata compacta</i>	6 ft 2 m	3 ft 1 m	☉☼	2		Flaming red fall color. Excellent for small shrub beds and hedges.
BURNING BUSH TURKESTAN <i>Euonymus nanus 'Turkestanica'</i>	1.5 ft 0.5 m	3 ft 1 m	☉☼	2	pink	Low sprawling biblical shrub with linear leaves. Rose fall foliage color appears to be burning.
BURNING BUSH WINGED <i>Euonymus alata</i>	5 ft 1.5 m	10 ft 3 m	☉☼	3	yellow	Green foliage turns rose color in fall. Curious corky bark is attractive winter feature.
FIREBALL BURNING BUSH <i>Euonymus alatus 'Select'</i>	3 ft 1 m	3 ft 1 m	☉☼	3	pink	Compact tighter branching and improved winter hardiness.

Shrubs

Variety	Height	Spread	Sunlight	Zone	Colour	Features
FRUIT SHRUBS						
NANKING CHERRY <i>Prunus tomentosa</i>	10 ft 3 m	7 ft 2 m	☼	2	light pink	Red-fruiting variety. Good for jellies; popular with birds.
SWEETBERRY HONEYSUCKLE <i>Lonicera caerulea 'Edulis'</i>	5 ft 1.5 m	3 ft 1 m	☼	3	white	Compact shrub with shredding bark. Palatable blue fall fruit attracts birds.
HYDRANGEA						
ANNABELLE HYDRANGEA <i>Hydrangea arborescens 'Annabelle'</i>	3 ft 1 m	3 ft 1 m	☾	3 - 4	white	Showy, large, white, flat flower clusters. Suitable shrub for shaded, moist area.
ENDLESS SUMMER HYDRANGEA <i>Hydrangea macrophylla 'Bailmer'</i>	3 ft 1 m	3 ft 1 m	☾	3 - 4	pink-blue	Produces flowers on new wood. Remember this shrub dies down and comes back.
PEGEE HYDRANGEA <i>Hydrangea paniculata 'Grandiflora'</i>	3 ft 1 m	3 ft 1 m	☾	3 - 4	light pink	Showy, large, pinkish pyramidal flower clusters. Suitable shrub for shaded, moist area.
QUICKFIRE HYDRANGEA <i>Hydrangea paniculata 'Bulk'</i>	7 ft 2 m	8 ft 2.6 m	☾	4	red/pink	Proven Winners introduction and it blooms a month earlier.
LILACS						
BEAUTY OF MOSCOW LILAC <i>Syringa vulgaris 'Krasavitsa Moskvyy'</i>	10 ft 3 m	7 ft 2.3 m	☾☼	2	pink	Very heavy bloomer; double pink flowers. Good screening plant or feature.
CHARLES JOLY - FRENCH LILAC <i>Syringa vulgaris 'Charles Joly'</i>	10 ft 3 m	7 ft 2.3 m	☾☼	3	reddish purple	Grafted roots to control suckering. Reddish purple, double fragrant flowers.
COMMON LILAC <i>Syringa vulgaris</i>	10 ft 3 m	7 ft 2.3 m	☾☼	2	purple	Old fashioned favorite with fragrant flowers. Has suckering habit but good in windbreaks.
DWARF KOREAN LILAC <i>Syringa meyeri 'Palibin'</i>	3 ft 1 m	3 ft 1 m	☾☼	3	lavender	Miniature leaves and flowers fit into small yards. One of the woody plants of the year in 1996 and 97.
KATHERINE HAVEMEYER - FRENCH LILAC <i>Syringa vulgaris 'Katherine Havemer'</i>	10 ft 3 m	7 ft 2.3 m	☾☼	3	bluish pink	Grafted roots to control suckering. Pink double fragrant flowers.
MADAME LEMOINE - FRENCH LILAC <i>Syringa vulgaris 'Madame Lemoine'</i>	10 ft 3 m	7 ft 2.3 m	☾☼	3	white	Grafted roots to control suckering. White double fragrant flowers.
MISS CANADA PRESTON LILAC <i>Syringa prestoniae 'Miss Canada'</i>	10 ft 3 m	7 ft 2.3 m	☾☼	3	pink	Vigorous non-suckering shrub. Pink single flowers later than French Lilac.
MISS KIM LILAC <i>Syringa patula 'Miss Kim'</i>	5 ft 1.6 m	3 ft 1 m	☾☼	3	lavender	Larger leaves and later flowering than Korean. Substitute for Korean Lilac. Purplish fall foliage.
PRESIDENT GREVY - FRENCH LILAC <i>Syringa vulgaris 'President Grevy'</i>	10 ft 3 m	7 ft 2.3 m	☾☼	3	blue	Grafted roots to control suckering. Blue double fragrant flowers.
ROYALTY PRESTON LILAC <i>Syringa prestoniae 'Royalty'</i>	10 ft 3 m	7 ft 2.3 m	☾☼	3 purple		Vigorous non-suckering shrub. Purple single flowers later than French Lilac.
SENSATION - FRENCH LILAC <i>Syringa vulgaris 'Sensation'</i>	10 ft 3 m	7 ft 2.3 m	☾☼	3	purple & white	Grafted roots to control suckering. Sensational purple flowers with white edges.
VILLOSA or LATE LILAC <i>Syringa villosa</i>	10 ft 3 m	7 ft 2.3 m	☾☼	2	lavender	Hardy, drought tolerant hedge or windbreak. Purple single flowers later than French Lilac.
MOCKORANGE						
MINNESOTA SNOWFLAKE MOCKORANGE <i>Philadelphus 'Minnesota Snowflake'</i>	5 ft 1.6 m	3 ft 1 m	☾☼	3	white	Most fragrant flowering shrub. Double white flowers in summer.
VIRGINAL MOCKORANGE <i>Philadelphus virginialis</i>	8 ft 2.6 m	4 ft 1.3 m	☾☼	4	white	Double, white very fragrant flowers. Can be leggy; requires pruning.
WATERTON MOCKORANGE <i>Philadelphus lewisii 'Waterton'</i>	7 ft 2.3 m	5 ft 1.5 m	☾☼	2	white	Most fragrant flowering shrub with lilac & rose. Hardy Mockorange from Waterton Park in Alberta.
NINEBARK						
CENTER GLOW NINEBARK <i>Physocarpus opulifolius 'Center Glow'</i>	5 ft 1.5 m	5 ft 1.5 m	☾☼	3	white	Foliage emerges gold and changes to burgandy.

☾ = part sun ● = shade ☼ = sun

Shrubs

Variety	Height	Spread	Sunlight	Zone	Colour	Features
COPPERTINA NINEBARK <i>Physocarpus opulifolius 'Mindia'</i>	6 ft 2 m	4 ft 1.5 m	☀️	3	white	New foliage is copper color, which turns red in summer.
DART'S GOLD NINEBARK <i>Physocarpus opulifolius 'Dart's Gold'</i>	3 ft 1 m	3 ft 1 m	☀️	3	white	Deep pink fruit appear in late summer. Compact, attractive golden shrub.
DIABOLO NINEBARK <i>Physocarpus opulifolius 'Diabolo'</i>	7 ft 2.3 m	5 ft 1.5 m	☀️	3	white	Flowers in summer. Strong, upright growth.
NUGGET NINEBARK <i>Physocarpus opulifolius 'Nugget'</i>	5 ft 1.6 m	4 ft 1.3 m	☀️	3	white	Foliage turns lime green as season progresses. White flowers in early spring.
POTENTILLA						
ABBOTSWOOD POTENTILLA <i>Potentilla fruticosa 'Abbotswood'</i>	3 ft 1 m	3 ft 1 m	☀️	2	white	Most popular white flowering potentilla. Potentilla bloom continuously all summer.
GOLDFINGER POTENTILLA <i>Potentilla fruticosa 'Goldfinger'</i>	5 ft 1.6 m	3 ft 1 m	☀️	2	dark yellow	Popular and largest yellow flowering potentilla. Named for notorious Goldfinger in James Bond.
GOLDSTAR POTENTILLA <i>Potentilla fruticosa 'Goldstar'</i>	2 ft 0.6 m	3 ft 1 m	☀️	2	golden yellow	Golden yellow flowers on this dwarf shrub. Potentilla bloom continuously all summer.
MANGO TANGO POTENTILLA <i>Potentilla fruticosa 'Mango Tango 'U man'</i>	3 ft 1 m	3 ft 1 m	☀️	2	golden yellow	Golden yellow blooms.
ORANGE WHISPER POTENTILLA <i>Potentilla fruticosa 'Orange Whisper'</i>	3 ft 1 m	3 ft 1 m	☀️	2	orange	Orange flowers on this uniform mounded shrub. Potentilla bloom continuously all summer.
ORANGEADE POTENTILLA <i>Potentilla fruticosa 'Orangeade'</i>	1 ft 30 cm	2 ft 60 cm	☀️	2	orange	Plant shows more of spreading habit. Keeps its color well.
PINK BEAUTY POTENTILLA <i>Potentilla fruticosa 'Pink Beauty'</i>	3 ft 1 m	3 ft 1 m	☀️	2	pink	Double pink flowers on this mounding shrub. New introduction from Manitoba.
TANGERINE POTENTILLA <i>Potentilla fruticosa 'Tangerine'</i>	3 ft 1 m	3 ft 1 m	☀️	2	amber	Amber flowers on this spreading shrub. Potentilla bloom continuously all summer.
YELLOW GEM POTENTILLA <i>Potentilla fruticosa 'Yellow Gem'</i>	1.5 ft 0.5 m	3 ft 1 m	☀️	2	bright yellow	Bright yellow flowers on this spreading shrub. Potentilla bloom continuously all summer.
RHODODENDRON						
PJM COMPACT RHODODENDRON <i>Rhododendron 'PJM Compact'</i>	3 ft 1 m	3 ft 1 m	☀️	4	pink	Compact version of above plant. Likes acidic peaty soil. Hardest Rhododendron.
PJM RHODODENDRON <i>Rhododendron 'PJM'</i>	3 ft 1 m	3 ft 1 m	☀️	4	pink	Showy trumpet-shaped blooms early in spring. Likes acidic peaty soil. Hardest Rhododendron.
LIGHTS AZALEA'S <i>Rhododendron x 'Rosy Lights'</i>	3 ft 1 m	3 ft 1 m	☀️	4	white, pink, orange, yellow	Showy double flower clusters in late spring. Plant in sheltered area in moist peaty soil.
SPIREA						
ANTHONY WATERER SPIREA <i>Spiraea bumalda 'Anthony Waterer'</i>	2 ft 0.6 m	3 ft 1 m	☀️	3	pink	Low growing shrub with long blooming season. Well-known variety with colorful foliage.
ASHLEAF or FALSESPIREA <i>Sorbaria sorbifolia</i>	7 ft 2 m	7 ft 2 m	☀️	2	creamy white	Spreading shrub which will grow in any landscape. Lacy foliage produces plumes of flowers.
BRIDAL WREATH SPIREA <i>Spiraea vanhouttei</i>	7 ft 2.3 m	5 ft 1.6 m	☀️	3	white	Arching branches veiled with white flowers in June. Tall upright spreading shrub.
FAIRY QUEEN SPIREA <i>Spiraea trilobata 'Fairy Queen'</i>	2 ft 0.6 m	2 ft 0.6 m	☀️	3	white	Low sprawling shrub with white flowers in June. Cultivar of three-lobed spirea.
FROBELLII SPIREA <i>Spiraea bumalda 'Frobellii'</i>	3 ft 1 m	3 ft 1 m	☀️	2	pink	Similar to Anthony Waterer but hardier & taller. Frobellii is an old-fashioned favorite.
GARLAND SPIREA <i>Spiraea arguta compacta</i>	3 ft 1 m	3 ft 1 m	☀️	3	white	Spring blooming Spirea with garlands of flowers. Dwarf compact shrub with fine-textured foliage.
GOLDFLAME SPIREA <i>Spiraea bumalda 'Goldflame'</i>	3 ft 1 m	3 ft 1 m	☀️	3	pink	Compact shrub for color contrast in the landscape. Popular colorful shrub.

Shrubs

Variety	Height	Spread	Sunlight	Zone	Colour	Features
GOLDMOUND SPIREA <i>Spiraea japonica</i> 'Goldmound'	2 ft 0.6 m	3 ft 1 m	☉ ☀	3 – 4	pink	Similar to and a substitute for Goldflame spirea. Dwarf compact colorful shrub.
LITTLE PRINCESS SPIREA <i>Spiraea japonica</i> 'Little Princess'	2 ft 0.6 m	3 ft 1 m	☉ ☀	4	pink	Dwarf compact mound shape on this small shrub. Foliage turns dark red in fall.
MAGIC CARPET SPIREA <i>Spiraea japonica</i> 'Magic Carpet'	1 ft 0.3 m	3 ft 1 m	☉ ☀	4	pink	Forms a miniature mound; compact Goldflame Gold to red foliage.
RENAISSANCE SPIREA <i>Spiraea vanhouttei</i> 'Renaissance'	4 ft 1.3 m	4 ft 1.3 m	☉ ☀	3	white	Graceful arching displays of white flowers. Blooms mid to late spring.
SHIROBANA SPIREA <i>Spiraea japonica</i> 'Shirobana'	3 ft 1 m	3 ft 1 m	☉ ☀	4	pink & white	Serrated lacy foliage with pink, red & white flowers. Tri-colored flowers create curious accent.
SUMAC						
SMOOTH CUTLEAF SUMAC <i>Rhus glabra</i> 'Lacinata'	7 ft 2.3 m	7 ft 2.3 m	☀	3	yellow	Smooth bark and divided, lacy leaves. Tolerates atmospheric pollution. Red fall fruit.
STAGHORN SUMAC <i>Rhus typhina</i>	10 ft 3 m	5 ft 1.6 m	☀	3	green	Hairy, fern-like foliage. Red fall fruit & foliage. Shrub spreads by suckering. Xeriscape plant.
TIGER EYES SUMAC <i>Rhus typhina</i> 'Bailitiger'	5 ft 1.5 m	5 ft 1.5 m	☀	3-4	yellow	Known for its intense fall color. Protection is needed.
VIBURNUM						
AMERICAN HIGH BUSH CRANBERRY <i>Viburnum trilobum</i>	10 ft 3 m	7 ft 2 m	● ☀	2	white	Green lobed leaves turn red in the fall. Suitable for shaded moist areas.
BAILEY COMPACT CRANBERRY <i>Viburnum trilobum</i> 'Bailey Compact'	5 ft 1.6 m	2 ft 0.6 m	● ☀	2	white	Compact shrub with colorful red fall foliage. Suitable for shaded moist areas.
BLUE MUFFIN ARROWWOOD <i>Viburnum dentatum</i> 'Christom'	7 ft 2 m	5 ft 1.5 m	☉ ☀	4	white	Showy umbrella-shaped flower clusters in spring. Attractive autumn red leaf color and blue clusters of fruit.
COMPACT EUROPEAN CRANBERRY <i>Viburnum opulus</i> 'Compactum'	5 ft 1.6 m	6 ft 2 m	● ☀	2	white	Standard cultivar; red fruit. Densely flowering; densely fruiting.
DWARF AMERICAN CRANBERRY <i>Viburnum trilobum</i> 'Compactum'	3 ft 1-5 m	3 ft 1.5 m	● ☀	2	white	Edible red berries in summer. Brilliant red fall foliage.
EUROPEAN DWARF CRANBERRY <i>Viburnum opulus</i> 'nanum'	2 ft 0.6 m	2 ft 0.6 m	● ☀	3	sterile	Dwarf shrub for shaded, moist area. Popular foliage plant with purple fall leaves.
NANNYBERRY <i>Viburnum lentago</i>	10 ft 3 m	7 ft 2.3 m	● ☀	3 whit	e	Glossy green foliage turns bright red in fall. Flowers turn into clusters of black berries.
SNOWBALL <i>Viburnum opulus roseum</i>	7 ft 2.3 m	5 ft 1.6 m	☉ ☀	3	white	Showy snowball shaped flower clusters in spring. Suitable shrub for shaded moist area.
WAYFARING TREE <i>Viburnum lantana</i>	7 ft 2.3 m	7 ft 2.3 m	● ☀	3	white	Olive-green, leathery leaves. Fruit turns from red to black.
WILLOW						
ARCTIC WILLOW <i>Salix purpurea</i> 'Nana'	3 ft 1 m	3 ft 1 m	☉ ☀	3	n/a	Mound-shaped shrub with linear leaves. Purple stems stand out in winter.
BLUEFOX WILLOW <i>Salix brachycarpa</i> 'Blue Fox'	3 ft 1 m	3 ft 1 m	☉ ☀	3	n/a	Upright, globe-shaped shrub. Colorful blue-grey foliage.
COYOTE WILLOW <i>Salix exigua</i> spp.	12 ft 4 m	12 ft 4 m	☉ ☀	3 n/a		Grows well in moist areas. Used for stream bank stabilization.
FLAME WILLOW <i>Salix</i> 'Flame'	16 ft 5 m	10 ft 3 m	☉ ☀	3	n/a	Flaming red-orange bark for winter color. Compact dense oval shrub.
FRENCH PUSSY WILLOW <i>Salix discolor</i>	16 ft 5 m	10 ft 3 m	☉ ☀	2	silver	Silvery catkins appear in spring before leaves. Nostalgic, large shrub that likes moist areas.
HAKURA NISHIKI WILLOW <i>Salix integra</i> 'Hakura Nishiki'	3 ft 1 m	3 ft 1 m	☉ ☀	3	n/a	Tri-color pink, white and green leaves. Unique new Japanese variety.
POLAR BEAR WILLOW <i>Salix salicola</i>	16 ft 5 m	6 ft 2 m	☉ ☀	2	silver	Hardy as a polar bear from the Arctic Circle. Hairy silvery blue foliage on this new variety.
WOLF WILLOW <i>Elaeagnus commutata</i>	7 ft 2.3 m	7 ft 2.3 m	☀	2	yellow	Hardy, native shrub with silvery foliage. Scented spring flowers. Drought tolerant.

☉ = part sun ● = shade ☀ = sun

Evergreens

Variety	Height	Spread	Sunlight	Zone	Colour	Features
RUSSIAN CYPRESS-MICROBIOTA <i>Microbiota decussata</i>	1 ft 0.3 m	5 ft 1.6 m	☉☼	3	green	Rare evergreen with bright green foliage used as ground cover. Similar to and a substitute for cedar.
SIBERIAN LARCH <i>Larix sibirica</i>	50 ft 16 m	23 ft 7 m	☉☼	2	green	Unique deciduous conifer sheds needles in winter. Soft clusters of needles. Golden fall color.
CEDAR						
DANICA CEDAR <i>Thuja occidentalis 'Danica'</i>	3 ft 1 m	3 ft 1 m	☉	4	green	Slow-growing, compact variety. Prefers moist areas; keep out of windy areas.
GLOBE CEDAR <i>Thuja occidentalis 'Woodwardii'</i>	7 ft 2.3 m	7 ft 2.3 m	☉	3-4	dark green	Large, globe-shaped evergreen.
LITTLE GIANT CEDAR <i>Thuja occidentalis 'Little Giant'</i>	3 ft 1 m	3 ft 1 m	☉	4	green	Popular globe-shaped evergreen.
SKYBOUND CEDAR <i>Thuja occidentalis 'Skybound'</i>	18 ft 5.5 m	4 ft 1.25 m	☉	3	green	Improved hardiness and rich dark foliage
WAREANA or SIBERIAN CEDAR <i>Thuja occidentalis 'Wareana'</i>	10 ft 3 m	7 ft 2.3 m	☉	3-4	green	Broader upright cedar. Robust rugged plant. Also called Siberian cedar.
JUNIPERS						
BAR HARBOR JUNIPER <i>Juniperus horizontalis 'Bar Harbor'</i>	1 ft 0.3 m	7 ft 2.3 m	☉☼	3	bluish-green	Grayish-green foliage turns purple in winter. Center tends to open up with age.
BLUE ARROW JUNIPER <i>Juniperus virginiana 'Blue Arrow'</i>	13 ft 4 m	2 ft 0.6 m	☉☼	3	blue	Very narrow upright juniper, steel-blue foliage, requires no trimming.
BLUE CHIP JUNIPER <i>Juniperus horizontalis 'Blue Chip'</i>	1 ft 0.3 m	7 ft 2.3 m	☉☼	3	blue	Bright blue foliage is retained to winter. Popular, superb spreading ground cover.
BLUE PRINCE JUNIPER <i>Juniperus horizontalis 'Blue Prince'</i>	1 ft 0.3 m	3 ft 1 m	☉☼	3	blue-green	Provide snow cover in winter for extra protection. Excellent blue color.
BLUE RUG JUNIPER <i>Juniperus horizontalis 'Wiltoni'</i>	0.5 ft 0.15 m	7 ft 2.3 m	☉☼	3	blue	Lowest growing, spreading Juniper. Useful as a ground cover.
BLUE STAR JUNIPER <i>Juniperus squamata 'Blue Star'</i>	1.5 ft 0.5 m	5 ft 1.6 m	☉☼	4	blue	Bright blue, star-shaped needles for color contrast. Popular spreading, slow growing juniper.
BUFFALO JUNIPER <i>Juniperus sabina 'Buffalo'</i>	1 ft 0.3 m	7 ft 2 m	☉☼	3	green	Bright green feathery foliage on this spreader. Juniper of the Year in 1996, 1997 and 1998.
CALGARY CARPET JUNIPER <i>Juniperus sabina 'Calgary Carpet'</i>	1 ft 0.3 m	5 ft 1.6 m	☉☼	3	green	Bright green foliage and dense branches. One of the best spreading junipers for the Prairies.
COLOGREEN JUNIPER <i>Juniperus scopulorum 'Cologreen'</i>	10 ft 3 m	5 ft 1.6 m	☉☼	3	green	Bright green foliage on this upright juniper. Compact branches and conical form.
MEDORA JUNIPER <i>Juniperus scopulorum 'Medora'</i>	10 ft 3 m	3 ft 1 m	☉☼	3	blue-green	Upright columnar form. Bluish-green foliage.
MONTANA GREEN JUNIPER <i>Juniperus scopulorum 'Montana Green'</i>	13 ft 4 m	5 ft 1.6 m	☉☼	3	green	Requires little pruning to maintain its shape.
MOONGLOW JUNIPER <i>Juniperus scopulorum 'Moonglow'</i>	10 ft 3 m	5 ft 1.6 m	☉☼	3	blue	Popular performing upright blue Juniper. Similar to Wichita Blue with glowing foliage.
MOTHERLODE JUNIPER <i>Juniperus horizontalis 'Motherlode'</i>	0.5 ft 0.15 m	4 ft 1.3 m	☼	4	gold	Golden yellow sport of Wiltoni. New variety from Iseli Nursery.
NEW BLUE TAM JUNIPER <i>Juniperus sabina 'Tamariscifolia'</i>	2 ft 0.6 m	5 ft 1.6 m	☉☼	3	blue	Symmetrical mound-shaped spreader. Good contrasting blue foliage color.
PRINCE OF WALES JUNIPER <i>Juniperus horizontalis 'Prince of Wales'</i>	1 ft 0.3 m	7 ft 2.3 m	☉☼	3	green	Lowest growing green spreading juniper. Selection from the Waterton area of SW Alberta.
SAVIN JUNIPER <i>Juniperus sabina</i>	3 ft 1 m	7 ft 2.3 m	☉●☼	3	green	Original species with scale-like, green foliage. Vase-shaped form on this spreading juniper.
SCANDIA JUNIPER <i>Juniperus sabina 'Scandia'</i>	1 ft 0.3 m	5 ft 1.6 m	☉●☼	3	green	Sister to Arcadia juniper but smaller and lower growing. Feathery spreader is a good green ground cover.

Evergreens

Variety	Height	Spread	Sunlight	Zone	Colour	Features
SKYROCKET JUNIPER <i>Juniper virginiana 'Skyrocket'</i>	13 ft 4 m	2 ft 0.6 m	☀️	3	bluish-green	Narrow columnar juniper.
TABLE TOP BLUE JUNIPER <i>Juniperus scopulorum 'Table Top'</i>	5 ft 1.6 m	7 ft 2.3 m	☀️	3	blue	Unique upright, flat topped variety. Use as a specimen plant.
TAMARISCIFOLIA JUNIPER <i>Juniperus sabina 'Tamariscifolia'</i>	2 ft 0.6 m	7 ft 2.3 m	☀️	3	green	Symmetrical mound-shaped spreader. Attractive branches give formal appearance.
WICHITA BLUE JUNIPER <i>Juniperus scopulorum 'Wichita Blue'</i>	10 ft 3 m	5 ft 1.5 m	☀️	3	blue	Similar to Moonglow but finer foliage. Most popular upright juniper.
PINE						
AUSTRIAN PINE <i>Pinus nigra</i>	40 ft 12 m	20 ft 6.6 m	☀️	4	green	Dark green stiff needles, compact growth habit. Will's Select variety, excellent pyramidal shape.
MUGHO PINE <i>Pinus mugo</i>	15 ft 5 m	10 ft 3 m	☀️	1	green	Popular shrubby pine with 2 short needles in cluster. Hardest coniferous evergreen shrub.
MUGHO PINE <i>Pinus mugo 'Mops'</i>	3 ft 1 m	3 ft 1 m	☀️	3	green	Nice short, compact form of Mugo.
MUGHO PINE <i>Pinus mugo 'Slowmound'</i>	1 ft 0.3 m	1 ft 0.3 m	☀️	3	green	Smallest rock garden variety.
MUGHO PINE <i>Pinus mugo 'Big Tuna'</i>	13 ft 4 m	7 ft 2.3 m	☀️	3	green	Tall, narrow variety.
MUGHO PINE (Dwarf) <i>Pinus mugo 'Pumilo'</i>	4 ft 1.3 m	7 ft 2.3 m	☀️	3	green	Dwarf form of Mugo.
SCOTCH PINE <i>Pinus sylvestris</i>	50 ft 15 m	26 ft 8.3 m	☀️	3	bluish-green	Hardy fast growing pine with long needles and cinnamon red bark.
SWISS STONE PINE <i>Pinus cembra</i>	13 ft 4 m	10 ft 3 m	☀️	3	green	Columnar conical conifer. Picturesque pine tree.
SPRUCE						
BABY BLUE EYES SPRUCE <i>Picea pungens glauca 'Baby Blue'</i>	10 ft 3 m	8 ft 2.6 m	☀️	3	blue	Dwarf blue spruce, great for small yards.
BIRD'S NEST SPRUCE <i>Picea abies 'Nidiformis'</i>	3 ft 1 m	5 ft 1.6 m	☀️	3	dark green	Flat-topped, low growing coniferous shrub. Use in place of juniper.
COLORADO BLUE SPRUCE <i>Picea pungens 'Glauca'</i>	35 ft 11 m	13 ft 4 m	☀️	2	blue	Selected for blue needle color as a specimen. Also used as a screen, shade, or street tree.
COLORADO GREEN SPRUCE <i>Picea pungens</i>	35 ft 11 m	13 ft 4 m	☀️	2	green	Long rigid needles on pyramidal-shaped tree. Used as a screening tree or in shelterbelts.
COLUMNAR BLUE SPRUCE <i>Picea pungens 'Fastigiata'</i>	15 ft 3 m	7 ft 1 m	☀️	3	blue	Popular hardy, columnar, narrow spruce that can be used as a Picea specimen instead of an upright juniper or pyramidal cedar.
FAT ALBERT SPRUCE <i>Picea pungens 'Fat Albert'</i>	25 ft 8 m	12 ft 4 m	☀️	3	blue	Beautiful bright blue spruce from Iseli Nursery. Broader based and wider than Colorado Spruce.
GLOBE BLUE SPRUCE <i>Picea pungens 'Globosa'</i>	5 ft 1.6 m	5 ft 1.6 m	☀️	2	blue green	Compact, dwarf slow growing, globe-shaped spruce. Also available as an attractive grafted standard as a specimen.
HOOPSII SPRUCE <i>Picea pungens 'Hoopsii'</i>	30 ft 10 m	10 ft 3 m	☀️	2	blue	Brightest bluest spruce. Narrow pyramidal shape.
MONTGOMERY SPRUCE <i>Picea pungens 'Montgomery'</i>	5 ft 1.6 m	5 ft 1.6 m	☀️	3	blue	Large than a Globe and little more oval shaped.
WEeping NORWAY SPRUCE <i>Picea abies 'Pendula'</i>	7 ft 2.3 m	3 ft 1 m	☀️	4	green	Weeping spruce requires staking to grow upright. Also grown as a ground cover, blue variety available.

Deciduous Trees

Name	Height	Spread	Zone	Fall Colour	Flower Colour	Features
SNOWBIRD HAWTHORN <i>Crataegus 'Snowbird'</i>	15 ft 5 m	12 ft 4 m	3	green	white	Upright tree with double white spring flowers. Glossy serrated leaves. Clusters of red fruit.
OHIO BUCKEYE <i>Aesculus glabra</i>	20 ft 7 m	15 ft 5 m	3	yellow	yellow	Large compound leaves. Interesting prickly nuts follow flowers.
QUAKING TREMBLING ASPEN <i>Populus tremuloides 'Pikes Bay'</i>	30 ft 10 m	15 ft 5 m	2	yellow	catkins	Native tree that grows in natural groves. Leaves tremble in wind.
MAYDAY <i>Prunus padus commutata</i>	30 ft 10 m	25 ft 8 m	3	yellow	white	Showy fragrant flower clusters in May. Black bitter fruit attracts birds.
BURR OAK <i>Quercus macrocarpa</i>	30 ft 10 m	20 ft 7 m	3	yellow light	acorns	Rare, slow growing, hardy oak for the prairies. Produces acorns. Lobed leaves. Corky bark.
RUSSIAN OLIVE <i>Elaeagnus angustifolia</i>	20 ft 6 m	12 ft 4 m	4	yellow	yellow	Small tree with attractive silver leaves. Drought tolerant.
SCHUBERT CHOKECHERRY <i>Prunus virginiana 'Schubert'</i> <i>Prunus virginiana 'Midnight'</i>	30 ft 10 m	15 ft 5 m	3	purple	white	Black cherries follow fragrant spring flowers. New leaves emerge green but mature purple.
AMUR MAACKIA <i>Maackia amurensis</i>	18 ft 6 m	15 ft 5 m	3	green	cream	Excellent small tree. Blooms late summer.
DROP MORE LINDEN <i>Tilia mongolica 'Harvest Gold'</i>	40 ft 12 m	30 ft 9 m	3	yellow	yellowish white	Bright golden color in fall.
SUTHERLAND CARAGANA <i>Caragana arborescens 'Sutherland'</i>	13 ft 4 m	5 ft 1.5 m	2	yellow	yellow	Tall, columnar accent plant. Attractive in row plantings as a tall hedge.
DROP MORE LINDEN <i>Tilia flavescens 'Dropmore'</i>	33 ft 10 m	20 ft 7 m	3	yellow	yellowish white	Medium-sized pyramidal tree, dark green leaves. Fragrant flowers in June.
AMERICAN ELM <i>Ulmus americana</i>	50 ft 15 m	30 ft 9 m	3	yellow	samara	Umbrella or vase-shaped street or shade tree. Good in large open areas. Toothed leaves.
TOBA HAWTHORN <i>Crataegus mordenensis 'Toba'</i>	15 ft 5 m	12 ft 4 m	3	green	pink	Upright tree with double pink flowers in spring. Glossy serrated foliage. Clusters of red fruit.
TOWER POPLAR <i>Populus canescens 'Tower'</i>	30 ft 9 m	7 ft 2 m	2	yellow	catkins	Narrow columnar tree for smaller yards.
ADVANCE MAYDAY <i>Prunus padus commutata 'Advance'</i>	30 ft 10 m	20 ft 7 m	3	yellow	white	Flowers bloom earlier than standard Maydays.
AMUR CHERRY <i>Prunus maackii 'Jeffree' (Goldrush)</i>	26 ft 8.3 m	20 ft 7 m	3	yellow	white	Improved resistance to winter damage.
AMUR CHERRY <i>Prunus maackii</i>	30 ft 10 m	15 ft 5 m	3	yellow	white	Black fruit follow flowers. Colorful bronze bark for winter color.
ALDER						
PRAIRIE HORIZONE ALDER <i>Alnus hirsuta 'Harbin'</i>	40 ft 12 m	30 ft 9 m	3	yellow	catkins	Dark green-purple catkins that turn golden brown in the fall.
ASH						
AMERICAN MOUNTAIN ASH <i>Sorbus americana</i>	25 ft 8 m	20 ft 7 m	3	orange	white	Orange fruit in fall and winter attracts birds. Spring flowers, lacy leaves, good fall color.
MANCHURIAN ASH <i>Fraxinus mandschurica</i>	30 ft 10 m	15 ft 5 m	3	yellow		Symmetrical street or shade tree. More compact than Green Ash.
EUROPEAN MOUNTAIN ASH <i>Sorbus aucuparia</i>	30 ft 10 m	20 ft 7 m	3	orange	white	Similar to American Mountain Ash but larger.
SHOWY MOUNTAIN ASH <i>Sorbus decora</i>	20 ft 7 m	15 ft 5 m	2	orange	white	Hardest Mountain Ash with lacy compound leaves. Showy flowers and fruit.

Deciduous Trees

Name	Height	Spread	Zone	Fall Colour	Flower Colour	Features
PATMORE GREEN ASH <i>Fraxinus pennsylvanica</i> 'Patmore'	30 ft 10 m	15 ft 5 m	3	green	none	Seedless selection that leafs out earlier and holds leaves longer than other green ash.
OAKLEAF MOUNTAIN ASH <i>Sorbus hybrida</i>	30 ft 10 m	20 ft 7 m	3	yellow	white	Leaves shaped like oak leaves. Reddish orange berries popular with birds.
NORTHERN TREASURE ASH <i>Fraxinus nigra</i> 'Northern Treasure'	30 ft 10 m	15 ft 5 m	3	yellow	none	Hybrid with upright growth. Excellent cold tolerance.
RUSSIAN MOUNTAIN ASH <i>Sorbus aucuparia</i> 'Rossica'	25 ft 8 m	12 ft 4 m	3	orange	white	Another selection of European Mountain Ash. Upright columnar growth habit.
FALL GOLD BLACK ASH <i>Fraxinus nigra</i> 'Fallgold'	30 ft 10 m	15 ft 5 m	3	yellow	none	More uniform shape than green ash. Suitable seedless street tree.
ASPEN						
SWEDISH COLUMNAR ASPEN <i>Populus tremula</i> 'Erecta'	30 ft 10 m	5 ft 2 m	3	yellow	catkins	Narrow columnar tree suitable for small area. Specimen tree useful for a vertical accent.
BIRCH						
BIRCH <i>Betula sp</i>	40 ft 12 m	15-20 ft 5 m	3	yellow	catkins	A wonderful front yard tree.
CRABAPPLE						
DOLGO CRABAPPLE <i>Malus</i> 'Dolgo'	25 ft 8 m	15 ft 5 m	3	yellow	white	Wide branching, white flowering crabapple. Ornamental value plus makes delicious jelly.
COLUMNAR CRABAPPLE <i>Malus baccata</i> 'Rosthern'	20 ft 6 m	4 ft 1 m	3	yellow	white	Narrow columnar tree suitable for small yard. Fragrant flowers and small fruit.
KELSEY CRABAPPLE <i>Malus</i> 'Kelsey'	15 ft 5 m	15 ft 5 m	4	orange	reddish purple	Bronze foliage. Only double flowering crab. Named after Henry Kelsey, the explorer.
MAKAMIK CRABAPPLE <i>Malus</i> 'Makamik'	20 ft 6 m	15 ft 5 m	3	orange	rose	Vigorous growing crab with profuse flowers. Profuse fruit persists well into winter.
RADIANT CRABAPPLE <i>Malus</i> 'Radiant'	20 ft 6 m	15 ft 5 m	3	orange	rose	New leaves emerge red then turn to green. Popular red flowering crabapple.
HOPA CRABAPPLE <i>Malus</i> 'Hopa'	20 ft 6 m	15 ft 5 m	3	yellow	rose	Prolific bloomer. Fruit good for jelly Upright growth habit widens out with age.
SELKIRK CRABAPPLE <i>Malus</i> 'Selkirk'	20 ft 7 m	20 ft 7 m	3	orange	pink	Hardy vigorous tree. Red leaves turn bronze-green over summer.
STRATHMORE CRABAPPLE <i>Malus</i> 'Strathmore'	20 ft 6 m	13 ft 4 m	3	orange	pink	Profuse pink blooms. Uniform upright pyramidal grower.
THUNDERCHILD CRABAPPLE <i>Malus</i> 'Thunderchild'	20 ft 7 m	15 ft 5 m	3	orange	pink	More uniform shape than Royalty. Consistent performer resistant to fire blight.
ROYAL BEAUTY CRABAPPLE <i>Malus pendula</i> 'Royal Beauty'	9 ft 3 m	3 ft 1 m	2	yellow	pink	Bronze foliage and dark red apples appear in the fall.
SPRING SNOW <i>Malus</i> 'Spring Snow'	25 ft 8 m	15 ft 5 m	3	Yellow	white	Green foliage and non-fruiting crabapple.



The Real Deal

7730 Gaetz Avenue N, Red Deer
403-342-5095 • www.totem.ca
 Contract Sales: 346-7893 • Installations: 346-4241

Service... Always In Stock



So Much More Than A Typical Lumber Store... And The TOTEMEDGE Too!
 Double Air Miles, Up To \$1000 Cash-Back In Totem Gift Cards And No-Interest Financing Options Everyday! Conditions Apply, Details In-Store.

The Pre-Planned Package Experts

Project Packages For:

- Fences • Decks • Sheds • Garages
- And Playcentres For Active Kids!



Deciduous Trees

Name	Height	Spread	Zone	Fall Colour	Flower Colour	Features
ROYALTY CRABAPPLE <i>Malus 'Royalty'</i>	20 ft 6 m	15 ft 5 m	3	orange	red	Popular variety has spectacular purple leaves. Dark red flowers in spring are fit for royalty.
CRABAPPLES						
RED JADE CRABAPPLE <i>Malus pendula 'Red Jade'</i>	9 ft 3 m	12 ft 4 m	3	yellow	pink	Foliage is glossy green, yields outstanding display of red apples in the fall.
LILACS						
IVORY SILK LILAC <i>Syringa reticulata 'Ivory Silk'</i>	20 ft 7 m	12 ft 4 m	3	orange	creamy white	Compact selection of Japanese Tree Lilac. Creamy flower clusters and cherry-like bark.
JAPANESE TREE LILAC <i>Syringa reticulata</i>	20 ft 7 m	12 ft 4 m	3	orange	creamy white	Creamy flower clusters in summer. Deep brown bark color stands out in winter.
MAPLE						
AMUR MAPLE <i>Acer ginnala</i>	16 ft 5 m	10 ft 3 m	3	scarlet red	samara	Small graceful tree or large shrub. Excellent fall color leaves and 2-winged seeds.
MANITOBA MAPLE <i>Acer negundo 'Sensation'</i>	30 ft 10 m	20 ft 7 m	2	yellow	samara	Has furrowed bark and is also called Box Elder. Hardy tree useful as a screen or windbreak.
POPLAR						
TOWER POPLAR <i>Populus x canaensis "Tower"</i>	40 ft 12 m	10 ft 3 m	3	yellow	catkins	Fast growing large narrow tree.
WILLOW						
LAUREL LEAF WILLOW <i>Salix pentandra</i>	30 ft 9 m	25 ft 8 m	2	green	catkins	Fast growing tree with glossy leaves. Water loving tree that likes moist area.
SILVER or WHITE WILLOW <i>Salix alba sericea</i>	35 ft 11 m	20 ft 7 m	3	silver	catkins	Fast growing tree with silver summer foliage. Likes moist area.
GOLDEN WILLOW <i>Salix alba vitellina</i>	30 ft 10 m	25 ft 8 m	4	yellow	catkins	Fast growing tree suitable for shelterbelts. Attractive golden stems stand out in winter.

Trees for Small Yards	Trees with Fall Color	Trees Showy All Year	Trees that Attract Birds
Amur Maple	Amur Cherry	Amur Cherry	Apple Varieties
Apple/Pear Varieties	Amur/Northwood Maple	Evergreens	Amur Cherry
Apricot/Plum Varieties	Apricot/Plum Varieties	Flowering Crabapple	Flowering Crabs
Bakerii Spruce	Ash/Elm/Poplar Varieties	French Pussy Willow	Hawthorn Varieties
Bristlecone Pine	Bur Oak	Golden Willow	Mayday
Flowering Crabapple	Butternut	Grafted Caragana	Mtn. Ash Varieties
Grafted Caragana	Larch/Linden Varieties	Hawthorn Varieties	Pear Varieties
Hawthorn Varieties	Mtn. Ash Varieties	Japanese Tree Lilac	Pin Cherry
Japanese Tree Lilac	Ohio Buckeye	Mtn. Ash Varieties	Plum Varieties
Montgomery Spruce	Pear/Plum Varieties	Oak	Schubert Chokecherry
Muckle Plum	Pin Cherry	Pear Varieties	
Pyramidal Mtn. Ash	Royal Flowering Crab	Pin Cherry	
Showy Mtn. Ash	Silver Maple	Russian Olive	
Swedish Aspen	Swedish Aspen	Silky White Willow	
Tower Poplar			

Tree Fruit

Name	Height	Spread	Zone	Fall Colour	Flower Colour	Features
APPLES						
FALL RED APPLE <i>Malus 'Fall Red'</i>	15-20 ft 5-7 m	12-15 ft 4-5 m	3	yellow	white	Large, red fruit color. Ripens in September. Good for eating fresh and stores well.
PARKLAND APPLE <i>Malus 'Parkland'</i>	15-20 ft 5-7 m	12-15 ft 4-5 m	3	yellow	white	Medium-sized red fruit. Ripens in late August. Excellent to eat fresh, cooking and stores well.
HARDI-MAC APPLE <i>Malus 'Hardi-Mac'</i>	15-20 ft 5-7 m	12-15 ft 4-5 m	3	yellow	light pink	Bright red crisp fruit. Ripens late September.
SEPTEMBER RUBY APPLE <i>Malus 'September Ruby'</i>	15-20 ft 5-7 m	12-15 ft 4-5 m	3	yellow	white	Medium-sized red fruit. Ripens in mid-September. Good for eating fresh or juicing. Stores well.
KERR APPLECRAB <i>Malus 'Kerr'</i>	20 ft 5-7 m	15 ft 4-5 m	3	yellow	white	Cross of apple and crab with mid-size deep/dark red fruit. Ripens in September. Good for eating fresh.
RESCUE APPLECRAB <i>Malus 'Rescue'</i>	20 ft 7 m	15 ft 5 m	3	yellow	white	Cross of apple and crab produces mid-size green red striped fruit. Ripens in September.
NORLAND APPLE <i>Malus 'Norland'</i>	15-20 ft 5-7 m	12-15 ft 4-5 m	3	yellow	white	Medium-sized green fruit with red stripes. Ripens in mid-August. Good to eat fresh.
BATTLEFORD APPLE <i>Malus 'Battleford'</i>	15-20 ft 5-7 m	12-15 ft 4-5 m	3	yellow	white	Large-sized green and red striped fruit. Ripens September. Good for eating fresh or cooking.
HARCOURT APPLE <i>Malus 'Harcourt'</i>	15-20 ft 5-7 m	12-15 ft 4-5 m	3	yellow	white	Fruit is red. Ripens late September. Good for eating fresh.
NORKENT APPLE <i>Malus 'Norkent'</i>	15-20 ft 5-7 m	12-15 ft 4-5 m	3	yellow	white	Large fruit, similar taste to golden delicious. Light-green apple well streaked with red.
GOODLAND APPLE <i>Malus 'Goodland'</i>	15-20 ft 5-7 m	12-15 ft 4-5 m	3	yellow	white	Large fruit is red and green. Ripens mid-September. Good for eating fresh, cooking and stores well.
COMBINATION APPLE <i>Malus 'Combination'</i>	15-20 ft 5-7 m	12-15 ft 4-5 m	3	yellow	light pink	Minimum of 3 cultivars grafted onto one tree. Unique conversation piece for smaller yard.
HARALSON APPLE <i>Malus 'Haralson'</i>	15-20 ft 5-7 m	12-15 ft 4-5 m	3	yellow	white	Fruit is green & red striped. Ripens late-September. Good for eating fresh and stores well.
CHERRIES						
PINCHERRY <i>Prunus pensylvanica</i>	16 ft 5 m	10 ft 3 m	3	orange	white	Small ornamental tree with fragrant flowers. Red cherries in fall attract birds. Reddish bark.
EVANS CHERRY <i>Prunus x 'Evans'</i>	9-12 ft 3-4 m	10 ft 3 m	3	yellow	white	Self-pollinating; excellent for eating, jams, etc. Mature tree can yield up to 20 kg. fruit.
PEARS						
URE PEAR <i>Pyrus ussuriensis 'Ure'</i>	20 ft 7 m	15 ft 5 m	3	amber	white	2 different varieties required for cross-pollination. Small, sweet, green fruit for canning.
GOLDEN SPICE PEAR <i>Pyrus 'Golden Spice'</i>	20 ft 7 m	15 ft 5 m	3	amber	white	2 different varieties required for cross-pollination. Yellow, spicy fruit in canned and cooked desserts. Showy spring flowers for ornamental value.
EARLY GOLDEN <i>Pyrus 'Early Golden'</i>	20 ft 7 m	13 ft 4 m	3	amber	white	2 different varieties required for cross-pollination. Very showy, large flowers. Wonderful tasty fruit can be used for fresh eating or making jam.

COURSES!

We offer spring, summer and winter courses.
For a complete listing, visit www.parklandgarden.ca
or drop by for a course description sheet.

Tree Fruit

Name	Height	Spread	Zone	Fall Colour	Flower Colour	Features
PLUMS						
BROOKRED PLUM <i>Prunus 'Brookred'</i>	15 ft 5 m	12 ft 4 m	3	amber	white	Red skinned and orange fleshed, larger fruit. Ripens in August. Good for canning.
BOUNTY PLUM <i>Prunus 'Bounty'</i>	15 ft 5 m	12 ft 4 m	3	amber	white	Hardy and productive tree. Sour fruit very good for preserves.
OPATA PLUM <i>Prunus 'Opata'</i>	15 ft 5 m	12 ft 4 m	3	amber	white	Greenish-purple skinned and green-fleshed fruit. Ripens in August. Good for eating fresh and jelly.
PEMBINA PLUM <i>Prunus 'Pembina'</i>	15 ft 5 m	12 ft 4 m	3	amber	white	Purple-skinned, orange-fleshed, larger fruit. Ripens in September. Good for eating fresh.
TECUMSEH PLUM <i>Prunus 'Tecumseh'</i>	15 ft 5 m	12 ft 4 m	3	amber	white	Bears heavy crops of red plums with yellow flesh. One of the earliest to ripen.
BROOKGOLD PLUM <i>Prunus 'Brookgold'</i>	15 ft 5 m	12 ft 4 m	3	amber	white	Gold-skinned tasty fruit. Ripens in August. Good fresh or canned.

“IN JOY OR SADNESS, FLOWERS ARE OUR CONSTANT FRIENDS” -
KOZUKO OKAKURA



Listen to Kraze 101.3 FM 8:50 am
every Sunday morning or
Sunny 94 FM after the 9:00 am news
every Sunday morning for
Sunny Gardening Tips with Alfred





100% Recycled Product

Colours: Charcoal, Redbrick, Chestnut, Autumn Gold & Natural

Bulk Available: 2 & 3 Cubic Foot Bags

Non-Toxic for Plants and Animals

Start Mulching ■ Stop Weeding



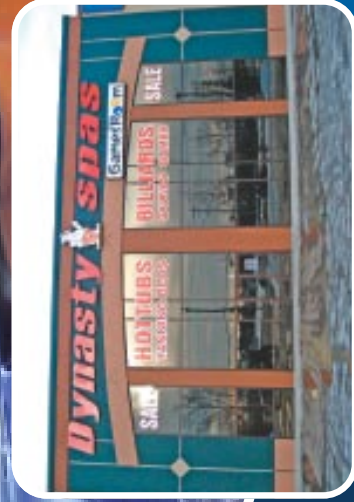
www.eccowaste.com

E: sales@eccowaste.com P: 403-720-3855 F: 403-720-3856 TF: 1-866-720-0444
10012 - 24th Street SE, Calgary, AB T2C 3X7 — A Division of ECCO Waste Systems LP



Your Daily Vacation!™

**Central Alberta's
Largest Hot Tub
& Billiard Dealer**



#2, 6013 - 48th Avenue
Riverside Industrial Area, Red Deer, AB

403.358.6060 www.dynastyspas.com

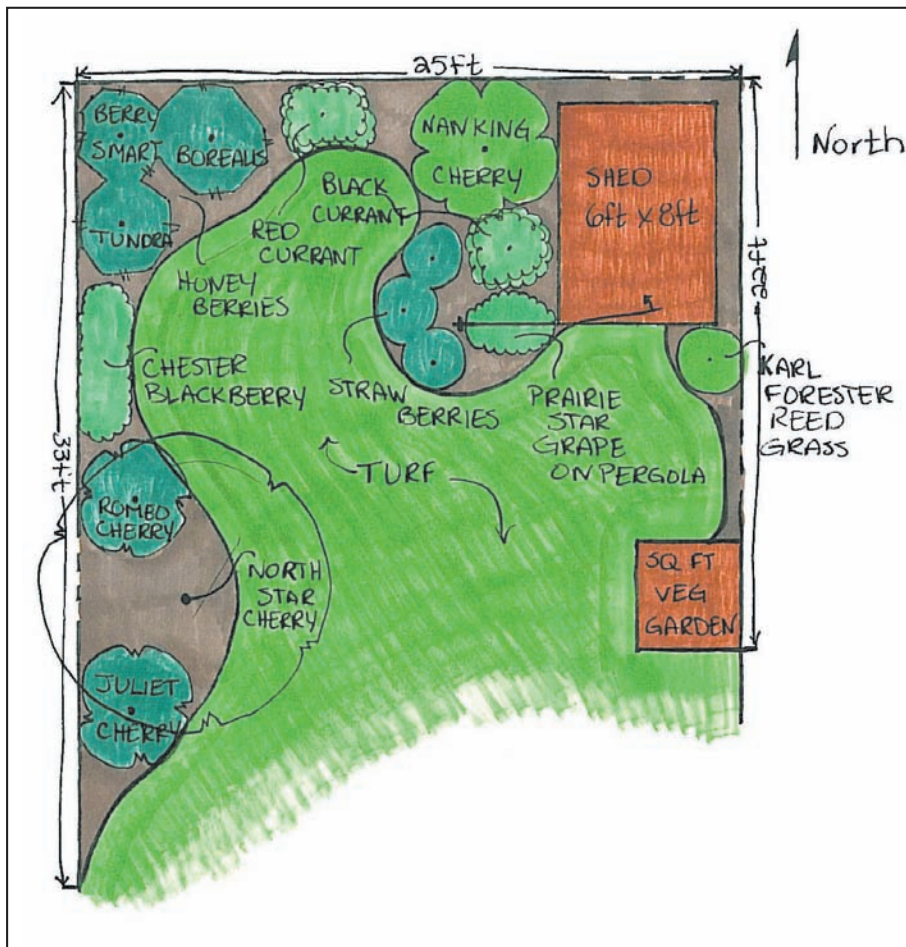
Hot Tubs/Spas • Billiards • Saunas • Gazebos • Tanning Beds • Massage Chairs

Fruit Gardens for the Small Yard

As yards become smaller, many people wonder whether or not they have space for growing fruit. Not only may fruit be grown, it also provides beauty in landscapes. By using the proper material in the proper place, you will create a beautiful garden that the whole family will enjoy and appreciate.

By using three different varieties of Honeyberry, you will ensure good fruit production that tastes similar to a blueberry. Nanking Cherry makes a wonderful jelly for your family to enjoy. As a small tree, North Star Cherry adds both fruit and beauty. For sweeter cherries, we recommend Romeo and Juliet as two good choices. New to the Garden Centre this year is the Prairie Star Grape (green) and Chester Thornless Blackberry.

To complete your fruit garden, add currants and strawberries to create a beautiful and nutritious garden for the whole family to enjoy.



Be sure to check out our website at www.parklandgarden.ca

Parkland Nursery
Garden Centre Inc.