



**Parkland**  
Garden Centre

# 2008 Garden Guide

**Open year-round**  
Located on Highway 11 East  
Red Deer, Alberta  
**(403)346-5613**



**An Environmentally Friendly Product For the Consumer, Made From Recycled Wood**



Colors:  
Charcoal, Chestnut, Autumn Gold, Redbrick, and Natural

Size: 2 Cubic Foot Bag, 3 Cubic Foot Bag, or Bulk

**ECCO CHIPS**

10012 – 24th Street SE, Calgary, AB T2C 3X7

Tel: (403) 720-3855 Fax: 720-3856

ian@eccochips.com



A Division of ECCO Waste Systems Ltd.

**www.totem.ca • Where Building Begins.**



**So Much More Than A Lumber Store!**

- Lumber •Plywood •Hardware •Tools •Plumbing
- Electrical •Heating •Doors •Windows •Furniture
- Flooring •Paint •Panelling •Mouldings •Ceramics
- Special Orders •And Much, Much More!

**Totem... The Package People!**

Standard material packages are available in a wide range of sizes and styles or, we can quote a price on your own custom design. Talk to our friendly, knowledgeable Salespeople. They'll be glad to help with your project plans... large or small, and quote an economical price on the entire job, done to your specifications.

**7730 Gaetz Avenue North**

**342-5095**

**Fax: 343-3040, Contract Sales: 346-7893**



**Pre-Planned Material Projects... We Are The Package Experts!**



**• Building With Alberta Since 1970 •**

## Keeping It Green!

With the renewed interest in environment and environmentally friendly products, Parkland Garden Centre Ltd. has many items to suit each need.

Our extensive line of environmental products include green solutions for a wide range of problems such as:

**Turf Maiz** – eco-friendly weed control for lawns as a pre-emergent

**Eco-Sense** – to solve problems with weeds and insects available as an herbicide and insecticide

**Organic Fertilizers** – from Myke, Bio TLC and Muskie Fish Fertilizer for strong, healthy, vibrant plants

**Ecco Chips** – bark made from recycled wood to reduce space in landfills available in charcoal, natural, autumn gold, brick red, and chestnut Rice Pots/Jiffy Pellets – to use as a container that will break down in the soil and leave no by-products in the soil

**Natural Animal Repellents** – for pests causing damage around your yard such as Skoot and Plantskyd

**Organic Lawn Care Products** – for all season care for a healthier, greener lawn such as Bio TLC Liquid Lawn and Garden fertilizer

These are only some of our eco-friendly line of products that are available to keep your green space green and comfortable. Come in and talk to our experts and let them assist you in becoming more environmentally friendly.

## In the Garden Shop for 2008

We boast a wide selection of solid, imported wood furniture in a variety of styles and colors to suit any home's decor.

We also have a large number of unique home accents and accessories such as our new bamboo wall tea light stands, willow bundles and a charming selection of decorative ladders.

Department 56, The Krinkles and Snowbabies are available all year round but are displayed in the fall and Christmas seasons.

We carry a trendy, natural looking, fun collection of jewelry made of coconut, wood, horn and bone accented with shells and seeds.

Don't forget about our excellent selection of garden statuary and accessories to suit any garden. As well, look through our vast array of ceramic pots; we are sure you will find some unique ones to make your garden the talk of the town. We also carry pots of many varieties, colors and shapes.

Check us out first for all your Gardening Tool needs. Our selection is among the best and we have all the accessories to make any garden first class.

## Summer Bulbs for Easy Gardening

Growing flowers and vegetables from bulbs is such a rewarding and easy task!

Some of our more exotic garden flowers are grown from bulbs and tubers, such as Dahlias, Gladiolus, Lilies, Begonias and vegetables like Onions, Potatoes and many more.

This year we have the same amazing selection as last year and then some!

The feature bulb this year is **Dahlia "Fire & Ice"**. It sports beautiful 4 inch (10cm) semi-double blooms in rich cream and brilliant red.

Also new for this year are these exciting new lilies:

**Purple Prince** – beautiful lavender purple

**Red Dutch** – a red & yellow bicolor, fragrant Orienpet lily

**Strawberry & Cream** - a soft pink Tango lily with red blotch in the throat

We will also have **landscape Amaryllis** in red for outdoor planting

These bulbs all arrive about March 10, so come on in and see for yourself. Remember, many of these can be planted in containers on your patio. So March is not too early to start some in pots indoors!

Seed potatoes and onion sets will begin arriving in early April. Visit us early and often for the best selection!

We are always continuing to discover new items, so visit us frequently to see what is new!

### Flowering Hanging Gardens

10" (25 cm) and 12" (30 cm) pots

**Buy one at regular price and get the second for half price**  
(Of equal or lesser value)

Present this coupon on any Wednesday in June 2008

Limit one coupon per customer/per purchase  
While Quantities Last

## New & Great for 2008!

Nowhere on earth are we closer to heaven than in the garden, especially one with a rainbow of floral colors and plants along with a soothing array of textures, shapes and sizes.

With the selection of flowering and foliage annuals that we have lined up for this spring, a truly magnificent piece of heaven is entirely possible for your garden, whether it be in sun or shade.

We have all the usual exotic flowering and foliage plants and all the tried and true "must have" varieties, but added to that are the following exciting new beauties:

<b>Petunia Shock Wave Mix</b>	a new, smaller flowered, more weather-resistant version of the ever-popular "waves"
<b>Petunia Baby Duck</b>	a brand new soft yellow colored super trailing type of petunia
<b>Calibracoa</b>	"Aloha" series – a larger flowered, sturdier version of the popular Million Bells type plant, in a series of delightful, tropical colors
<b>Dracaena</b>	the ever-popular, old standard now in red, copper, and variegated and dwarf, green, clump-forming types
<b>Begonia Bonfire</b>	a new hanging begonia, for part sun locations, producing thousands of orange-red flame colored blooms
<b>Sanvitalia</b>	Double Gold – a beautiful, tough, trailing plant for full sun, with bright yellow 1" (2.5cm) flowers that are now double flowering

We also have a beautiful new line of 12" and 14" (30cm & 35cm) wire hanging baskets, moss-lined, that will be fully planted in a riot of mixed colors for instant impact on the patio.

There is so much more to see than we can describe here, so come on in and check them out. They'll be ready to go starting in early April.

## Container Gardens

Have the best container gardens ever by following a few simple rules.

- Bring your containers in for our experts to custom plant them for you or you can do them yourself with the following tips.
- Choose the biggest containers that you can afford for the most impact.
- Keep the styles of the pots similar to your garden. If you have a formal garden, wrought iron or high-gloss glazed ceramic work best. For informal gardens, terra cotta and flat-finished ceramic work best.
- Containers do not need to be exactly the same. Use different heights, shapes, and sizes; the containers should all have a common element such as color.
- Containers must have drainage holes to ensure good plant health.
- Fertilize with slow release fertilizers – Smart Cote – 14-14-14
- Water daily using rain water if possible
- Remove spent blooms regularly for better re-blooming



Spring is here and with it comes new life, new hopes and new dreams.

Make this the year you find the home of your dreams!



**Paul & Melesa Starcheski**

#905, 4747 - 67th Street  
Red Deer, Ab. T4N 6H3

Paul  
phone: 598-7827  
e: starcp@telus.net

Melesa  
phone: 318-0515  
e: melesa@telus.net

## New & Great for 2008!

### New in Seed Selection for 2008

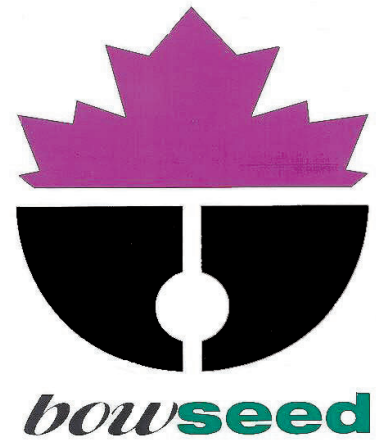
- 2 new selections from American suppliers at new, lower prices
- An entire collection of Climbing Vines from seed
- An entire rack of seeds for sprouting such as Alphalpha, Wheatgrass, Chick peas, Lentils, Sunflowers, Chives and more
- Bacopa now from seed
- Carrots in purple and white

Parkland boasts Central Alberta's largest selection of seeds, bulbs, and plant products to assist you in creating healthy, beautiful gardens. While at Parkland don't forget to check out our bulk products such as shale, pea gravel, mulch, bark chips, and topsoil etc.

We carry a large selection of seed, feeders and much more for your feathered friends as well.

If you are planning to build a pond, come in and see our great selection of pumps, liners and accessories including water plants. Talk to our Specialists to assist you in creating your dream water garden.

The choice of giftware, books, plant products, furniture, accessories and much more is tremendous and too varied to list. We extend an invitation to you to come to visit us today. You will have a unique and enjoyable experience!



### New in Perennials for 2008

New and exciting for this year are our feature pots that have wonderful pictures and information to help you have a successful perennial garden. The feature pots are categorized in themes such as:

- |  |  |
|--|--|
| <input type="checkbox"/> Drought Tolerant  | <input type="checkbox"/> Shade Lovers                                  |
| <input type="checkbox"/> Deer Resistant    | <input type="checkbox"/> Sun Lovers                                    |
| <input type="checkbox"/> Collectors Choice | <input type="checkbox"/> Wildlife (attracting wildlife to your garden) |

Go to [www.vanbloem.com](http://www.vanbloem.com) to make up your shopping list. This is an excellent source with color pictures and information about each plant.

This spring's new additions are a definite must see! So come out and have a look at our new introductions as well as your old favorites such as: Jeepers Creepers, Blooms, Rock Stars and the Top Ten.

### Some of the New for 2008 Perennials are:

- Ajuga Black Scallop** – a carpet bugle that is jet black; can be used as a rock garden plant; mildew resistant
- Astible Milk and Honey** - creamy-white flower on shiny green foliage; is rabbit and deer resistant
- Echinacea Summer Sky** – is the first bi-color Echinacea; with large flowers up to 5" across, with pink and orange blossoms; fragrant
- Heemerocallis Custard Candy** – daylily creamy yellow with a maroon band
- Heuchera Tiramisu** – Coral Bells with yellow-red foliage and flowers of creamy pink
- Hosta Blue Mouse Ears** – sister is Blue Cadet; has short spikes of lavender flowers
- Iris Before the Storm** – darkest German iris yet with a light fragrance; add this to your garden
- Geranium Rosanne** – 2008 Perennial of the Year, compact geranium with violet-blue flowers

### Very Easy to Grow Flowers for Beginners

Plant these at the right time of year and you will be satisfied. Come in to speak with our Horticulturists and ask for a handout with seeding dates.

- |  |  |
|--|--|
| <input type="checkbox"/> <b>Alyssum</b> – great for sun                | <input type="checkbox"/> <b>Nigella</b> – interesting seed pods                |
| <input type="checkbox"/> <b>Bachelor Buttons</b> – good cut flower     | <input type="checkbox"/> <b>Phacelia</b> – border plant                        |
| <input type="checkbox"/> <b>California Poppies</b> – full sun          | <input type="checkbox"/> <b>Snapdragons</b> – frost tolerant                   |
| <input type="checkbox"/> <b>Calendula/Cosmos</b> – good low hedge      | <input type="checkbox"/> <b>Strawflowers</b> – great for dried flowers         |
| <input type="checkbox"/> <b>Cut Flower Mixes</b>                       | <input type="checkbox"/> <b>Sunflowers</b> – great for birds                   |
| <input type="checkbox"/> <b>Everlastings</b> – great for dried flowers | <input type="checkbox"/> <b>Sweet Peas</b> – fragrant vine                     |
| <input type="checkbox"/> <b>Helipterum</b> – great for dried flowers   | <input type="checkbox"/> <b>Viola</b> – Johnny Jump Up – will often overwinter |
| <input type="checkbox"/> <b>Marigolds</b> – insect repellent           | <input type="checkbox"/> <b>Wildflower Blends</b> – for naturalizing           |
| <input type="checkbox"/> <b>Nasturtiums</b> – edible flowers           |  |

# Perennials

Name	Height/ Spread	Sun/ Shade	Flower Colour	Bloom Time	Soil Moisture	Features/Uses
<b>ALPINE ASTER</b> <i>Aster alpinus</i>	12/12 in 30/30 cm	☀	pink, purple	May to June	well drained	Short plants display star-shaped daisies. Ideal for front of border or rockery.
<b>ALPINE VERONICA</b> <i>Veronica allioni</i>	5/12 in 1 5/30 cm	☀☀	blue-violet	June to Aug	well drained	Attractive compact flower spikes. Excellent edging or alpine rockery plant.
<b>ALYSSUM-Basket of Gold</b> <i>Aurinia saxatile</i>	8/24 in 20/60 cm	☀☀	yellow	May to June	well drained	Good spring blooming rockery plant. Flowers in shades of yellow.
<b>ANTENNARIA-Pussy Toes</b> <i>Antennaria dioica</i>	6/12 in 15/30 cm	☀	pink	May to June	well drained	Forms dense carpet of silvery foliage. Drought tolerant. Good rock garden plant.
<b>ARABIS</b> <i>Arabis species</i>	8/24 in 20/60 cm	☀	red, pink, white	May to June	well drained	Spring flowering plant cascades over rocks. Dead head flowers after blooming.
<b>ASTILBE</b> <i>Astilbe species</i>	36/30 in 90/75 cm	☀☀	various	June to Aug.	moist soil	Showy flower spikes on lacy foliage. Must have moist soil. New 2007 - Key West (pink), Key Largo (pink), Key Biscayne (light pink), all have purple foliage.
<b>AURICULA PRIMROSE</b> <i>Primula auricula</i>	8/8 in 20/20 cm	☀☀	mixed various	April to May	moist soil	Wide range of colors with yellow eyes. Good for rock gardens or edging borders.
<b>BABY'S BREATH</b> <i>Gypsophila paniculata</i>	36/24 in 90/60 cm	☀☀	white, pink	June to July	well drained	Bristol Fairy is a suggested variety. Flowers for fresh or dried bouquets.
<b>BABY'S BREATH-CREEPING</b> <i>Gypsophila repens</i>	6/24 in 90/60 cm	☀☀	white, pink	June to July	well drained	Low creeping mat for edging or rock gardens.
<b>BACHELOR'S BUTTON</b> <i>Centaurea montana</i>	24/24 in 60/60 cm	☀	bluish- purple	June to Aug.	well drained	
<b>BALLOON FLOWER</b> <i>Platycodon grandiflorus</i>	30/24 in 75/60 cm	☀☀	purple, white	June to Aug.	well drained	Buds pop into balloon-like flowers! Similar to Campanula (Bellflower).
<b>BARRENWORT</b> <i>Epimedium rubrum</i>	12/12 in 30/30 cm	●	pink	May to June	moist soil	Rare semi-evergreen foliage in various colors. Slow spreading ground cover for shaded areas.
<b>BEARD-TONGUE PENSTEMON</b> <i>Penstemon hybrids</i>	36/24 in 90/60 cm	☀	various	May to Aug.	well drained	Tubular flower spikes like snapdragons. Taller varieties make good cut flowers.
<b>BEEBALM</b> <i>Monarda didyma</i>	36/18 in 90/45 cm	☀	purple, pink, red, white	June to July	moist soil	Tall plants with aromatic foliage. Attracts bees & butterflies. Good in borders or for cutting. Varieties available - Marshall's Delight (pink), Jacob Cline (red), Fireball (red), Petite Delight (pink) and new for 2007 Coral Reef (peach).
<b>BELLFLOWER</b> <i>Campanula carpatica</i>	9/12 in 20/30 cm	☀☀	purple, white	May to June	well drained	Cup-shaped flowers on compact clumps.
<b>BERGENIA</b> <i>Bergenia cordifolia</i>	18/24 in 45/60 cm	☀●☀	pink, white	June to July	moist soil	Large glossy green leaves turn bronze in fall.
<b>BICOLOR MONKSHOOD</b> <i>Aconitum cammarum</i>	48/24 in 120/60 cm	●☀	purple, white	July to Aug	moist soil	Bicolor purple & white flower combination. Useful for cut flowers or border.
<b>BLACK-EYED SUSAN</b> <i>Rudbeckia fulgida 'Goldsturm'</i>	36/18 in 90/45 cm	☀	yellow, orange	July to Sept.	<b>well drained</b>	Long blooming flowers. Perennial of the Year for 1999.
<b>BLANKET FLOWER</b> <i>Gaillardia x grandiflora 'Goblin'</i>	36/12 in 90/30 cm	☀	red eye/ gold tip	June to Sept.	well drained	Daisy-like flowers with contrasting centre eye.
<b>BLAZING STAR</b> <i>Liatrus spicata 'Kobold'</i>	36/18 in 90/45 cm	☀	orange, white, purple	July to Sept.	well drained	Long lasting spikes good as cut flower. Beautiful border plant also called Gay Feather.
<b>BLEEDING HEART-Fernleaf</b> <i>Dicentra formosa hybrids</i>	18/12 in 45/30 cm	☀●☀	white, red	June to Sept	well drained	Compact mounds of ferny foliage. Blooms all summer. New for 2007 Candy Hearts (pink).
<b>BLEEDING HEART</b> <i>Dicentra spectabilis</i>	36/24 in 90/60 cm	☀●☀	pink, white	May to June	well drained	Drooping chains of heart-shaped flowers! New for 2007 Gold Heart.

☀ = part sun ● = shade ☀ = sun

# Perennials

Name	Height/ Spread	Sun/ Shade	Flower Colour	Bloom Time	Soil Moisture	Features/Uses
<b>BUGBANE</b> <i>Cimicifuga racemosa</i> 'Brunette'	72/36 in 200/90 cm	☉●	pale pink	Aug to Sept.	moist soil	Purple leaves with pale pink flowers.
<b>BUGBANE</b> <i>Cimicifuga simplex</i>	48/36 in 120/90 cm	☉●	white	Sept to Oct.	moist soil	White flower in the summer.
<b>BUGLEWEED</b> <i>Ajuga reptans</i>	8/18 in 15/45 cm	☉●	purple	May to June	moist soil	Low ground cover with round leaves. Used for mass planting.
<b>BUNCHBERRY</b> <i>Cornus canadensis</i>	6/8 in 15/20 cm	☉●	white	May to June	moist acidic	Native ground cover with glossy leaves. Red berries & fall foliage.
<b>CAMPION</b> <i>Lychnis species</i>	15/12 in 38/30 cm	☼	pink	May to Sept.	well drained	Self-seeding alpine rockery plants.
<b>CANTERBURY BELLS</b> <i>Campanula medium</i>	36/12 in 90/30 cm	☉☼	purple, white	May to July	well drained	Old fashioned favorite with big bell flowers. Biennial.
<b>CHINA PAGODA PRIMOSE</b> <i>Primula vialii</i>	24/12 in 60/30 cm	☉●	mauve, pink	May to July	moist soil	Gorgeous rocket shaped spikes of flowers in a dazzling mauve-pink combination.
<b>CLUSTERED BELLFLOWER</b> <i>Campanula glomerata</i>	24/24 in 60/60 cm	☉☼	purple	June to July	well drained	Clusters of violet flowers. Invasive – spreads rapidly by stolons.
<b>COLUMBINE HYBRIDS</b> <i>Aquilegia x hybrida</i>	36/24 in 90/60 cm	☉●☼	various	May to June	moist & well drained	Popular perennial available in various colors. New for 2007 'Clemintine Red'.
<b>CONE FLOWER</b> <i>Echinacea purpurea</i>	48/24 in 120/60 cm	☼	purple, white	July to Sept.	well drained	Magnus was the 1998 Perennial Plant of the Year. New for 2007 'Pica Bella', 'Fancy Frills', 'Harvest Moon' (yellow), 'Twilight' (neon pink).
<b>CORAL BELLS</b> <i>Heuchera hybrid</i>	24/18 in 60/45 cm	☉	white	June to July	moist & well drained	Leaves large and ruffled. Burgundy underneath. New varieties for 2007 'Peach Flambe', 'Sparkling Burgandy', 'Orange Man'.
<b>CORNFLOWER</b> <i>Centaurea macrocephala</i>	4/2 ft 120/60 cm	☼	gold-yel- low	June to Aug.	well drained	Good for the back of a border. Excellent for cutting, fresh or dried.
<b>CORYDALIS</b> <i>Corydalis lutea</i>	12/12 in 30/30 cm	☉●	yellow	June to Sept.	moist & well drained	Long bloomer, self-seeds.
<b>CREeping JENNY</b> <i>Lysimachia nummularia</i>	4/18 in 10/45 cm	☉☼	gold, yel- low	May to Aug.	moist soil	Trailing stems quickly form thick carpet.
<b>CREeping VERONICA</b> <i>Veronica repens</i>	2/12 in 5/30 cm	☉☼	white	May to June	well drained	Low creeping carpet with spring flowers. Good ground cover or rock garden plant.
<b>CUPID'S DART</b> <i>Catananche caerulea</i>	24/12 in 60/30 cm	☼	lavender	July to Aug.	well drained	Cut papery flower for everlasting dried flower. Drought resistant plant for hot dry area.
<b>CUSHION SPURGE</b> <i>Euphorbia polychroma</i>	18/18 in 45/45 cm	☼	yellow	May to June	well drained	Dome of leaves covered by colored bracts. Drought-tolerant for hot, dry location. New for 2007 'Lacy' (variegated foliage).
<b>DAYLILY</b> <i>Hemerocallis x hybrida</i>	36/24 in 90/60 cm	☉☼	various	July to Aug.	well drained	Plants form sturdy clumps of grassy foliage. Lily-shaped flowers bloom in long succession. 2007 new varieties Moroccan Sunrise (lilac & cream), Regency Heights (cream violet-green), Ruby Stella (red).
<b>DELPHINIUM- BLUE ELF</b> <i>Delphinium grandiflorum</i>	12/12 in 30/30 cm	☼	bluish- purple	June to Aug.	well drained	Dwarf bushy mounds. Bright blue flowers.
<b>DELPHINIUM-MAGIC FOUNTAIN</b> <i>Delphinium x elatum</i>	30/24 in 75/60 cm	☼	mix	June to July	well drained	Colorful spikes of double flowers for cutting. Remove old flowers to induce repeat blooming.
<b>DELPHINIUM-PACIFIC GIANTS</b> <i>Delphinium elatum</i>	6/3 ft 1.8/9 m	☼	bluish- violet	June to July	well drained	Tall colorful spikes of double flowers for cutting. Remove old flowers to induce repeat blooms. Requires staking. Good background to border. New 2007 'New Zealand Hybrids' (all colors), 'New Millennium Hybrids' (all colors).
<b>DIANTHUS-CHEDDAR PINK</b> <i>Dianthus gratianopolitanus</i>	12/12 in 30/30 cm	☼	pink, red, white,	June to Aug	well drained	Sweet scented flowers good for cutting. Popular for edging and rockeries. New 2007 'Spangled Star'.



# Perennials

Name	Height/Spread	Sun/Shade	Flower Colour	Bloom Time	Soil Moisture	Features/Uses
<b>DIANTHUS-CLOVE PINK</b> <i>Dianthus plumarius</i>	12/12 in 30/30 cm	☀	pink, white, mix	May to June	well drained	Bluish grassy foliage forms a wide clump. Carnation-type flower has a strong clove scent.
<b>DIANTHUS-MAIDEN PINK</b> <i>Dianthus deltoides</i>	8/18 in 20/45 cm	☀	pink, red, white	June to Aug	well drained	Low spreading ground cover.
<b>DRAGON'S BLOOD SEDUM</b> <i>Sedum spurium</i>	6/18 in 15/45 cm	☀	various	June to Aug.	well drained	Succulent evergreen ground cover.
<b>DRUMSTICK PRIMROSE</b> <i>Primula denticulata</i>	12/10 in 30/25 cm	☀●	mixed	May to June	moist soil	White and lavender ball shaped flowers.
<b>DWARF AVENS</b> <i>Geum x 'Borisii'</i>	12/12 in 30/30 cm	☀	orange	May to June	well drained	Rare, bright orange flowers good for cutting. Compact plant for edging or rockery.
<b>DWARF STONECROP</b> <i>Sedum x species</i>	6/18 in 15/45 cm	☀	various, yellow	June to Aug.	well drained	Spreading drought tolerant ground cover.
<b>EDELWEISS</b> <i>Leontopodium alpinum</i>	6/10 in 15/25 cm	☀	white	June to July	well drained	Popular rockery plant from Swiss Alps. Woolly flowers used for dried arrangements.
<b>FAIRY THIMBLE</b> <i>Campanula cochlearifolia</i>	4/12 in 10/30 cm	☀☀	purple	June to Aug.	well drained	Alpine rockery plant with little bells. Fast spreading plant.
<b>FALL ASTER</b> <i>Aster-novae-angliae</i>	48/36 in 120/90 cm	☀	red, pink	Aug. to Sept.	well drained	Tall varieties are excellent for cut flowers. New England Asters are best for cutting.
<b>FALL ASTER</b> <i>Aster novi-belgi</i>	48/36 in 120/90 cm	☀	purple	Aug. to Sept.	well drained	Michaelmas Daisies are fall blooming.
<b>FALSE SUNFLOWER</b> <i>Heliopsis helianthoides</i>	48/24 in 120/60 cm	☀	yellow	July to Sept.	well drained	Large, long blooming, daisy-like flowers. Strong sturdy stems are good for cutting.
<b>FERN-FIDDLEHEAD</b> <i>Matteucia struthiopteris</i>	4/2 ft 12/60 cm	☀●	n/a	n/a	moist soil	Native. Good ground cover for shady moist location
<b>FERN-LADY</b> <i>Athyrium filix-femina</i>	24/24 in 60/60 cm	☀●	n/a	n/a	moist	Lacy-looking fan. Creeping rhizome.
<b>FERN-MALE</b> <i>Dryopteris filix-mas</i>	24/24 in 60/60 cm	☀●	n/a	n/a	moist	Easy, elegant fern.
<b>FERN-NORTHERN MAIDEN-HAIR</b> <i>Adiantum pedatum</i>	24/24 in 60/60 cm	☀●	n/a	n/a	moist	Delicate fronds turn gold in fall. Very beautiful.
<b>FEVERFEW</b> <i>Chrysanthemum parthenium</i>	24/12 in 60/30 cm	☀	white, yellow	June to Sept	well drained	Mum-like daisy flowers good for cutting. Foliage is aromatic.
<b>FLEABANE</b> <i>Erigeron speciosus</i>	30/24 in 75/60 cm	☀	pink	June to Aug.	well drained	Excellent cut flower or for summer border. Pink Jewel is the prettiest variety.
<b>FLEECEFLOWER</b> <i>Persicaria affine 'Diminuty'</i>	8/24 in 20/60 cm	☀☀	red	June to Aug.	well drained	Low mat of feathery leaves turn red in fall. Short spikes of flowers fade to pink.
<b>FOAMFLOWER</b> <i>Tiarella cordifolia</i>	12/12 in 30/30 cm	☀●	pink	May to July	moist soil	Evergreen with bronzy winter color. Low clumps of foliage with flower sprays.
<b>FOXGLOVE-COMMON</b> <i>Digitalis purpurea</i>	48/18 in 120/45 cm	☀☀	purple, pink mix	May to July	moist & well drained	Large showy spikes of flowers for cutting. Biennial that self seeds.
<b>GARDEN PHLOX</b> <i>Phlox paniculata</i>	48/30 in 120/75 cm	☀	various	July to Sept.	moist & well drained	Spectacular clusters of flowers. Wide range of colors for the border. New for 2007 'All in one' (lilac blooms), 'Darids Lavender' (lavender).
<b>GASPLANT</b> <i>Dictamnus alba</i>	36/24 in 90/60 cm	☀	white, lavender	June to July	well drained	Super plant for the sunny border. Spike-like flowers rise above the foliage.
<b>GERANIUM-BLOOD CRANES-BILL</b> <i>Geranium sanguineum</i>	18/18 in 45/45 cm	☀☀	white, pink, red	June to Aug.	well drained	Low spreading mound of finely cut leaves.
<b>GERANIUM JOHNSON BLUE</b> <i>Geranium x 'Johnson Blue'</i>	24/24 in 60/60 cm	☀	blue-violet	June to Aug.	well drained	Popular geranium with large bluish flowers. Vigorous border plant type. Self-seeder.
<b>GERMAN STATICE</b> <i>Goniolimon tataricum</i>	16/12 in 40/30 cm	☀	light pink	July to Aug.	well drained	Grown for cut or everlasting dried flowers. Foliage forms basal rosette of leaves.
<b>GLOBE THISTLE</b> <i>Echinops ritro</i>	48/24 in 120/60 cm	☀	bluish-purple	June to Sept.	well drained	Globular blooms for cut & dried flowers. Tall thistle-like plant for back of the border.

☀ = part sun ● = shade ☀ = sun

# Perennials

Name	Height/ Spread	Sun/ Shade	Flower Colour	Bloom Time	Soil Moisture	Features/Uses
<b>GOATSB Beard</b> <i>Aruncus dioicus</i>	48/56 in 120/90 cm	☉●	creamy white	June to July	moist soil	Large plant, lacy leaves. Good at waterside.
<b>GOATSB Beard-Dwarf Korean</b> <i>Aruncus aethusifolius</i>	12/12 in 30/30 cm	☉●	white	June to July	moist soil	Beautiful beside a water garden.
<b>GOLDENROD</b> <i>Solidago species</i>	36/12 in 90/30 cm	☉☼	gold-yel- low	Aug.	well drained	Cultivated native wild flower. Golden-yel- low flower plumes.
<b>LOOSESTRIFE – GOOSENECK</b> <i>Lysimachia clethroides</i>	36/36 in 90/90 cm	☉☼	white	July to Aug.	moist soil	Flower spikes bend like a gooseneck. Foli- age has good fall color.
<b>GRASS-BLUE FESCUE</b> <i>Festuca glauca</i>	12/12 in 30/30 cm	☼	tan	May to June	well drained	Clump forming with fine textured leaves.
<b>GRASS-BLUE OAT</b> <i>Helictotrichon sempervirens</i>	36/24 in 90/60 cm	☼	tan	May to July	well drained	Round clump of intense blue leaves. Ever- green cool-season grass.
<b>GRASS-BULBOUS OAT</b> <i>Arrhenatherum bulbosum</i>	18/12 in 45/30 cm	☼	tan	June	well drained	Clumps of cream & green striped leaves. Combines well with bulbs in spring.
<b>GRASS-KARL FOERSTER</b> <i>Calamagrostis 'Karl Foerster'</i>	42/24 in 100/60 cm	☼	gold	June to Sept.	well drained	Boldly striped foliage in white and green. Perennial Plant of the Year 2001.
<b>GRASS-RED SWITCH</b> <i>Panicum virgatum</i>	36/24 in 90/60 cm	☼	white	July to Aug.	well drained	Airy flowers turn into red seed heads. Out- standing orange fall foliage color.
<b>GRASS-RIBBON</b> <i>Phalaris arundinacea</i>	36/24 in 90/60 cm	☼	tan	June to July	moist & well drained	Spreading clumps striped with various col- ors. Hardy groundcover but not in border.
<b>HELEN IUM</b> <i>Helenium autumnale</i>	48/24 in 120/60 cm	☼	yellow, red	July to Aug.	well drained	Bright daisy-like flowers excellent for cut- ting. Moisture loving plant for the summer border.
<b>HENS AND CHICKS</b> <i>Sempervivum x hybrids</i>	6/12 in 15/30 cm	☼	pink, red	June to Aug.	well drained	Succulents with evergreen rosettes of leaves. Useful for edging & rock gardens.
<b>HOLLYHOCKS</b> <i>Alcea rosea</i>	84/18 in 200/45 cm	☼	mixed	July to Aug.	well drained	Old-fashioned favorite biennial reseeds itself. Best in back of border. Large blooms available in double or single.
<b>HOSTA</b> <i>Hosta var.</i>		☉●	lilac	July	moist & well drained	Shade groundcover. Hosta of the Year - 'Paradigm'. New varieties for 2007 Avocado, Rainforest Sunrise, Great Arrival, First Frost, Dust Devil, Summer Breeze, Lakeside Black Satin, Calypso, Fragrant Dream.
<b>IBERIS CANDYTUFT</b> <i>Iberis sempervirens</i>	10/36 in 25/90 cm	☉●☼	white	May to June	well drained	Evergreen foliage forms compact ground cover. Good for rock gardens or front of border.
<b>IRIS-ARTIC</b> <i>Iris setosa</i>	8/12 in 20/30 cm	☼	lavender	May to June	well drained	Compact clump with narrow leaves. Hardy species for edging border.
<b>IRIS-DWARF BEARDED</b> <i>Iris pumila</i>	8/12 in 20/30 cm	☼	purple, pink, white, yel- low	May to June	well drained	Old-fashioned favorite in showy display. In separate colors & named varieties. Sold as bulbs in August.
<b>IRIS-GERMAN BEARDED</b> <i>Iris germanica</i>	30/18 in 75/45 cm	☼	purple, pink, yellow, bronze	May to June	well drained	Old-fashioned favorite in showy display. Available in separate colors & named varieties. New varieties for 2007 Savannah Sunset, Let's Boogie, Violet Turner.
<b>IRIS-SIBERIAN</b> <i>Iris sibirica</i>	36/24 in 90/60 cm	☼	purple, white	May to June	well drained	Grassy leaves look good all summer. Deli- cate looking flowers for cutting. New for 2007 Dance Ballerina Dance (pink).
<b>IRISH MOSS</b> <i>Sagina subulata</i>	2/12 in 5/30 cm	●☼	white	May to June	moist & well drained	Creeping moss-like ground cover. Good between paving stones or in rock garden.
<b>SCOTCH MOSS</b> <i>Sagina subulata 'Aurea'</i>	2/12 in 5/30 cm	●☼	white	May to June	moist & well drained	Tiny white, star-like flowers.
<b>JACOB'S LADDER</b> <i>Polemonium caeruleum</i>	36/12 in 90/30 cm	●☼	bluish white	May to July	moist soil	Bell-like bluish flowers. Tall perennial for a shady border.

# Perennials

Name	Height/ Spread	Sun/ Shade	Flower Colour	Bloom Time	Soil Moisture	Features/Uses
<b>JOE PYE WEED</b> <i>Eupatorium maculatum</i>	7/3 ft 2/1 m	☀️	purple	Aug. to Sept.	moist soil	Large plant with purple flower heads. Attracts butterflies. New 2007 Baby Joe, Phantom (purple foliage).
<b>KINNIKINICK</b> <i>Bearberry Arctostaphylos uva-ursi</i>	6/6 in 15/15 cm	●️☀️	light pink	May to June	moist acidic	Native evergreen ground cover. Low growing plant for acid area under spruce.
<b>LADY'S MANTLE</b> <i>Alchemilla mollis 'Thriller'</i>	12/24 in 30/60 cm	●️☀️	yellow, green	June to July	well drained	Scalloped leaves for edging border. Sprays of lowers used in cut arrangements.
<b>LAMB'S EAR</b> <i>Stachys byzantina</i>	18/12 in 45/30 cm	●️☀️	pink	June	well drained	Spreading mat of silver woolly leaves. Drought tolerant edging plant or ground cover.
<b>LAMIUM</b> <i>Lamium maculatum</i>	12/12 in 30/30 cm	●️☀️	pink, white	May to Sept.	well drained	Attractive groundcover with variegated foliage.
<b>LARGE THRIFT</b> <i>Armeria pseudarneria</i>	24/12 in 60/30 cm	☀️	white, red	June to Aug.	well drained	Taller border strain with pink flowers.
<b>LAVENDER-MUNSTEAD</b> <i>Lavandula angustifolia</i>	16/24 in 40/60 cm	☀️	pink, purple	June to Aug.	well drained	Fragrant flower spikes & foliage. Suitable for the herb garden.
<b>LEOPARD'S BANE</b> <i>Doronicum cordatum</i>	16/12 in 40/30 cm	☀️●️☀️	yellow	May to June	moist & well drained	Attractive heart-shaped leaves. Showy daisy-like flowers are good for cutting.
<b>LEWISIA</b> <i>Lewisia cotyledon</i>	12/6 in 30/15 cm	☀️	pink	May to July	well drained	Unique alpine rockery plant. Evergreen rosette of fleshy foliage. New for 2007 Little Plum, Sunset Group.
<b>LIGULARIA</b> <i>Ligularia 'Desdemona'</i>	48/18 in 120/45 cm	☀️●️	orange	June to July	moist soil	Huge, rounded, purple leaves. Tall spikes of orange flowers.
<b>LIGULARIA</b> <i>Ligularia dentata 'Othello'</i>	48/18 in 120/45 cm	☀️●️	orange	June to July	moist soil	Useful for back of border.
<b>LIGULARIA 'LITTLE ROCKET'</b> <i>Ligularia stenocephala</i>	6/3 ft 200/90 cm	☀️●️	yellow	June to July	moist soil	Large rounded, toothed leaves. Tall background plant with yellow spikes.
<b>LILY-ASIATIC</b> <i>Lilium x hybrida</i>	48/12 in 120/30 cm	☀️●️	wide range	June to July	well drained	Hardy & easy to grow. Excellent long lasting cut flower. New for 2007 Mt. Duckling (Magenta), Elodie (double pink), Orange Art, Pup Art (red), Blackbird (plum), Matrix (red/orange).
<b>LILY-ORIENTAL</b> <i>Lilium x hybrids</i>	72/18 in 200/45 cm	☀️☀️	pink, red, white	Aug. to Sept.	well drained	Late blooming, fragrant, star-shaped flowers.
<b>LILY-TIGER</b> <i>Lilium lancifolium</i>	60/18 in 150/45 cm	☀️☀️	orange, red, yel- low, pink	June to July	well drained	Old-fashioned favorite. Superb strong stemmed cut flower. New for 2007 Montezuma (lavender).
<b>LILY-OF-THE-VALLEY</b> <i>Convallaria majalis</i>	6/12 in 15/30 cm	●️	white	May to June	well drained	Old fashioned, fragrant, bell-shaped flowers. Good ground cover for shady areas.
<b>LUNGWORT</b> <i>Pulmonaria species</i>	18/12 in 45/30 cm	☀️●️	various blue	April to May	moist soil	Attractive spotted leaves. Good for mass plantings as ground cover. New for 2007 High Contrast.
<b>LUPINE</b> <i>Lupinus x 'Russell Hybrid'</i>	36/24 in 90/60 cm	☀️	purple, pink, yel- low	June to Aug.	well drained	Tall spikes of flowers are good for cutting. Old-fashioned favorite perennial.
<b>LUPINE</b> <i>Lupinus x 'Gallery Series'</i>	36/24 in 90/60 cm	☀️	purple, pink, yel- low	June to Aug.	well drained	Tall spikes of flowers are good for cutting. Old-fashioned favorite perennial.
<b>MALLOW</b> <i>Sidalcea malviflora x cultorum</i>	36/18 in 90/45 cm	☀️☀️	pink	June to Aug.	well drained	Elegant spikes of satiny flowers for cutting. Party Girl is a mixture of various pink shades.
<b>MALTESE CROSS</b> <i>Lychnis chalconia</i>	48/12 in 120/30 cm	☀️	red	June to Aug.	well drained	Old fashioned, long-lived, hardy plant. Red flower clusters for cutting or in border.
<b>MARGUERITE DAISY</b> <i>Anthemis sancti-johannis</i>	18/36 in 45/90 cm	☀️	yellow, orange	June to Aug.	well drained	Hardy, showy member of the daisy family. Excellent for cutting. Drought tolerant.
<b>MARGUERITE DAISY</b> <i>Anthemis tinetoria</i>	18/36 in 45/90 cm	☀️	yellow, orange	June to Aug.	well drained	Hardy, showy member of the daisy family. Excellent for cutting. Drought tolerant.
<b>MARSH MARIGOLD</b> <i>Caltha palustris</i>	12/12 in 30/30 cm	☀️●️☀️	yellow	May	moist soil	Buttercup flowers, heart shaped leaves. Excellent waterside plant.

☀️ = part sun ●️ = shade ☀️ = sun

# Perennials

Name	Height/Spread	Sun/Shade	Flower Colour	Bloom Time	Soil Moisture	Features/Uses
<b>MASTERWORT</b> <i>Astrantia species</i>	24/18 in 60/45 cm	☉●	pink, red, white	June to Aug.	moist soil	Flowers look like Queen Anne's Lace. Use in shaded, moist area or as cut flower.
<b>MAYNIGHT SALVIA</b> <i>Salvia nemerosa 'May Night'</i>	24/24 in 60/60 cm	☼	Indigo violet	May to July	well drained	Perennial Plant of the Year 1997. Aromatic leaves and spike-like flowers.
<b>MEADOW PHLOX</b> <i>Phlox maculata</i>	36/24 in 90/60 cm	☼	pink, white	June to Aug.	moist & well drained	Spring follower evergreen ground cover. Fragrant flowers good for cutting.
<b>MEADOWRUE</b> <i>Thalictrum aquilegifolium</i>	36/24 in 90/60 cm	☉☼	mauve, white	May to June	moist soil	Cut leaves closely resemble Columbine. Fluffy flower sprays are used for cutting.
<b>MEADOWSWEET</b> <i>Filipendula rubra 'Venusta'</i>	6/4 ft 1.8/1.2 m	☉☼	pink	Aug. to Sept.	moist soil	Large flowers on this bold accent plant. Tall plumed for the back of the border.
<b>MISS WILLMOTT POTENTILLA</b> <i>Potentilla nepalensis</i>	12/12 in 30/30 cm	☼	red-pink	June to Sept.	well drained	Melon- red flowers with darker pink centre. Shear plants back after first flush of flowers.
<b>MONKSHOOD</b> <i>Aconitum napellus</i>	54/24 in 135/60 cm	☉☼	purple, pink	July to Aug.	moist soil	Tall sturdy border perennial. Showy flower spikes good for cut flowers.
<b>MORDEN MUMS</b> <i>Chrysanthemum morifolium</i>	12/8 in 30/20 cm	☼	yellow, bronze	Aug. to Sept.	well drained	Hardier mums produce fall flowers.
<b>OBEDIENT PLANT</b> <i>Physostegia virginiana</i>	48/24 in 120/60 cm	☉☼	pink, white	July to Sept.	moist soil	Tubular flower spikes - great cut flowers. Background plant also variegated form.
<b>PACHISTIMA</b> <i>Pachistima canbyi</i>	12/18 in 30/45 cm	☉			acidic	Low growing, broadleaf evergreen. Ground cover for shady area.
<b>PAINTED DAISY</b> <i>Tanacetum coccineum</i>	30/18 in 75/45 cm	☼	rose-pink	June to July	well drained	Old-fashioned cut flower with ferny foliage. Dead head regularly to increase flowering.
<b>PASQUE FLOWER</b> <i>Pulsatilla vulgaris</i>	12/12 in 30/30 cm	☼	purple, red	April to May	well drained	Early bloomer with crocus type blooms.
<b>PEACHLEAF BELLFLOWER</b> <i>Campanula persicifolia</i>	36/18 in 90/45 cm	☉☼	purple, white	June to Aug.	well drained	Showy, taller bellflower blooms longer. Strong stems good for cut flowers.
<b>PERENNIAL FLAX</b> <i>Linum perenne</i>	18/12 in 45/30 cm	☼	blue, white	May to Aug.	well drained	Linear leaves with continual blooms.
<b>PEONY</b> <i>Paeonia hybrids</i>	36/36 in 90/90 cm	☼	pink, red, white	June	well drained	Old-fashioned favorite with double flowers. Longest lived & largest flowering perennial! New for 2007 Baroness Schroeder (peach).
<b>PEONY-FERNLEAF</b> <i>Paeonia tenuifolia 'Plena'</i>	18/12 in 45/30 cm	☼	red	June	well drained	Finely cut leaves unlike others. Delicate double flowers.
<b>PERENNIAL SWEET PEA</b> <i>Lathyrus latifolius</i>	8/1 ft 240/30 cm	☼	pink-purple	June to Sept.	well drained	Native wildflower used as dried everlasting. Good fresh cut flower.
<b>PERSIAN CORNFLOWER</b> <i>Centaurea delbata</i>	30/24 in 75/60 cm	☼	pink-purple	June to Aug.	well drained	Sturdy perennial for the border. Thistle-like blooms for cut flowers.
<b>PHLOX-CREEPING OR MOSS</b> <i>Phlox douglasii</i>	5/18 in 12/45 cm	☼	pink, red, white, lavender	May	well drained	Woody shrub with spectacular flowers. Excellent edging & rockery plant.
<b>PHLOX-CREEPING OR MOSS</b> <i>Phlox subulata</i>	5/18 in 12/45 cm	☼	pink, red, white, lavender	June	well drained	Woody shrub with spectacular flowers. Excellent edging & rockery plant.
<b>PINCUSHION FLOWER</b> <i>Scabies caucasia</i>	30/18 in 75/45 cm	☼	white	June to Aug.	well drained	Ideal for edging along a shady border. Strong stems for long lasting cut flowers.
<b>PINCUSHION FLOWER</b> <i>Scabiosa columbaria</i>	18/12 in 45/30 cm	☼	lavender blue	June to Aug.	well drained	Large globe- shaped continuous flowers. Butterfly Blue is the Perennial of the Year for 2000.
<b>POPPY-ALPINE</b> <i>Papaver alpinum</i>	8/6 in 20/15 cm	☼	mixed	May to Aug.	well drained	Dainty poppies with lacy leaves for the rockery. Yellow, orange, pink & white flowers.
<b>POPPY-BLUE HIMALAYAN</b> <i>Meconopsis sp.</i>	48/24 in 120/60 cm	☉●	blue	July	moist soil	Needs a moist location. Allow to self-seed.
<b>POPPY-ICELAND</b> <i>Papaver nudicaule</i>	18/12 in 45/30 cm	●☼	mixed	May to Sept.	well drained	Papery yellow, orange, pink & white flowers! Re-seeds readily.
<b>POPPY-ORIENTAL</b> <i>Papaver orientale</i>	36/24 in 90/60 cm	☼	pink, red, orange	May to July	well drained	Showy huge flowers with hairy foliage. Excellent border perennial or cut flower!

# Perennials

Name	Height/ Spread	Sun/ Shade	Flower Colour	Bloom Time	Soil Moisture	Features/Uses
<b>POPPY-PLUME</b> <i>Macleaya cordata</i>	6/2 ft 200/60 cm	☀️	cream	July	moist soil	Colorful foliage with cream flower plumes. Unique giant background plant.
<b>POTENTILLA</b> <i>Potentilla neum 'Nana'</i>	4/12 in 10/30 cm	☀️	yellow	May to June	well drained	Low non-spreading alpine rockery plant. Buttercup flowers on compact mound.
<b>RHUBARB</b> <i>Rheum x hybridum</i>	3/3 ft 1/1 m	☀️	white	May to Sept.	well drained	Hardly vegetable with large leaves.
<b>ROCKCRESS</b> <i>Aubrieta hybrids</i>	6/24 in 15/60 cm	☀️	pink, red, purple	May to June	well drained	Popular rock garden plant. Foliage cascades over banks and walls.
<b>RODGERSIA</b> <i>Rodgersia species</i>	4/3 ft 200/90 cm	☀️	pink, white	July	moist soil	Large leaves; good as tall waterside plant. Misty plumes of flowers similar to Astilbe.
<b>RUSSIAN SAGE</b> <i>Perovskia atriplicifolia</i>	4/2 ft 120/60 cm	☀️	blue-violet	July to Sept.	well drained	Long bloomers with grey foliage. Perennial plant of the year in 1995.
<b>SALVIA</b> <i>Salvia nemerosa</i>	24/24 in 60/60 cm	☀️	pink, violet	June to Aug.	well drained	Scented spikes of flowers. Drought tolerant. New for 2007 Pink Friesland, Purple Volcano.
<b>SEA HOLLY</b> <i>Eryngium species</i>	24/12 in 60/60 cm	☀️	blue	June to Aug.	well drained	Prickly flowers good for cutting and drying. Drought tolerant of hot dry sites.
<b>SEA LAVENDER</b> <i>Limonium latifolium</i>	30/24 in 75/60 cm	☀️	lavender	June to Aug.	well drained	Grown for cut or everlasting dried flowers. Drought-tolerant border plant.
<b>SEDUM</b> <i>Sedum spectabile</i>	24/24 in 60/60 cm	☀️	pink	Aug. to Sept.	well drained	Succulent plants with upright growth habit. Flowers resemble broccoli.
<b>SHASTA DAISY</b> <i>Leucanthemum x superbum</i>	24/18 in 60/45 cm	☀️	white	June to Sept.	well drained	White Daisies with yellow centers good for cutting.
<b>SHOOTING STAR</b> <i>Dodecatheon meadia</i>	12/6 in 30/15 cm	☀️	pink	May to June	moist soil	Delicate flowers from a flat rosette of leaves. Mass planting in shady border.
<b>SILVER BROCADE SAGE</b> <i>Artemisia stelleriana</i>	12/30 in 30/75 cm	☀️	foliage	none	well drained	Low growing leaves similar to Dusty Miller. Excellent for edging or as ground cover.
<b>SILVER MOUND</b> <i>Artemisia schmidtiana</i>	12/18 in 30/45 cm	☀️	foliage	none	well drained	One of the most popular perennials! Compact mound of feathery foliage.
<b>SNOWDROP ANEMONE</b> <i>Anemone sylvestris</i>	18/24 in 45/60 cm	☀️	white	May to June	well drained	Spreading ground cover with nodding flower. Good cover for spring bulbs.
<b>SNOW-IN-SUMMER</b> <i>Cerastium tomentosum</i>	12/24 in 30/60 cm	☀️	white	May to June	well drained	Popular spreading plant. Drought tolerant. Great ground cover for full sunlight.
<b>SNOW-on-the-MOUNTAIN</b> <i>Aegopodium podagraria</i>	12/24 in 30/60 cm	☀️	green- white	July to Aug.	moist soil	Variiegated foliage. Vigorous ground cover. Too invasive for the garden or border.
<b>SOAPWORT</b> <i>Saponaria ocymoides</i>	8/18 in 20/45 cm	☀️	pink	May to June	well drained	Vigorous trailing rockery or edging plant. Useful for cascading over rocks & slopes.
<b>SOLOMON'S SEAL</b> <i>Polygonatum species</i>	24/12 in 60/30 cm	☀️	white	May to June	moist soil	Delicate bell flowers hang from stems.
<b>SPIDERWORT</b> <i>Tradescantia x andersoniana</i>	24/24 in 60/60 cm	☀️	various	June to Aug.	moist	Grassy foliage with showy triangular flowers. Plant in diagonal drifts in the border.
<b>SPIKE SPEEDWELL</b> <i>Veronica spicata</i>	24/12 in 60/30 cm	☀️	blue, pink	June to Aug.	well drained	Border plant with long-lasting flower spikes.
<b>STEMLESS GENTIAN</b> <i>Gentiana acaulis</i>	4/12 in 10/30 cm	☀️	true blue	May	moist soil	Low growing creeping mat good for rockery. Light blue flowers in springtime.
<b>SUNNY BORDER BLUE VERONICA</b> <i>Veronica 'Sunny Border Blue'</i>	24/12 in 60/30 cm	☀️	blue	June to Sept.	well drained	1993 Perennial of the Year. Long blooming spikes for cut flowers.
<b>SWEET ROCKET</b> <i>Hesperis matronalis</i>	36/12 in 90/30 cm	☀️	purple	June to July	well drained	Fragrant flowers resemble Summer Phlox. Old-fashioned garden plant for the border.
<b>SWEET WILLIAM</b> <i>Dianthus barbatus</i>	24/12 in 90/30 cm	☀️	red, pink, white	June to July	well drained	Classic cottage, self-seeding, biennial plant. Dead heading increases cut flowers.
<b>SWEET WOODRUFF</b> <i>Galium odoratum</i>	8/24 in 20/60 cm	☀️	white	May to July	moist soil	Delicate leaves with aromatic flower clusters. Excellent ground cover for moist shady area.
<b>THRIFT</b> <i>Armeria juniperifolia</i>	6/12 in 15/30 cm	☀️	pink, red, white	May to July	well drained	Excellent evergreen with grassy leaves. Suitable rock garden plants. Also called 'Sea Pink'.

☀️ = part sun ● = shade ☀️ = sun

# Perennials

Name	Height/ Spread	Sun/ Shade	Flower Colour	Bloom Time	Soil Moisture	Features/Uses
<b>THRIFT</b> <i>Armeria maritima</i> 'Alba'	6/12 in 15/30 cm	☀	pink, red, white	May to July	well drained	Excellent evergreen with grassy leaves. Suitable rock garden plants. Also called 'Sea Pink'.
<b>THRIFT</b> <i>Armeria</i> 'Dusseldorf Pride'	6/12 in 15/30 cm	☀	pink, red, white	May to July	well drained	Excellent evergreen with grassy leaves. Suitable rock garden plants. Also called 'Sea Pink'.
<b>LEMON THYME</b> <i>Thymus x citriodorus</i>	6/12 in 15/30 cm	☀	red, laven- der	June to July	well drained	Aromatic, excellent edging or rockery plants. Lemon thyme has lemon scented leaves.
<b>CREeping THYME</b> <i>Thymus praecox</i>	6/12 in 15/30 cm	☀	white	June to July	well drained	Creeping thyme is a good ground cover.
<b>WOODY THYME</b> <i>Thymus pseudolanuginosus</i>	6/12 in 15/30 cm	☀	pink	June to July	well drained	Woolly thyme forms a vigorous mat.
<b>MOTHER OF THYME</b> <i>Thymus serpyllum</i>	6/12 in 15/30 cm	☀	purple	June to July	well drained	Mother-of-thyme is much loved.
<b>TROLLIUS</b> <i>Trollius x cultorum</i>	36/24 in 90/60 cm	☀☀☀	orange, yellow	May to June	moist soil	Large round, buttercup flowers & cut leaves. Popular in shady border or as cut flowers.
<b>VALERIE FINNIS SAGE</b> <i>Artemisia ludoviciana</i>	36/30 in 90/75 cm	☀	foliage	none	well drained	Silver aromatic foliage. Drought tolerant plant for dry areas.
<b>VINCA</b> <i>Vinca minor</i>	6/18 in 15/45 cm	☀☀	violet, white	May to Sept.	well drained	Evergreen groundcover with glossy leaves.
<b>VIOLA</b> <i>Viola cornuta</i>	8/12 in 20/30 cm	☀☀	various	May to Sept.	moist soil	Excellent for edging or rock gardens. Self seeder. New 2007 variety Silver Samurai, Ruffled leaves and lavender flowers.
<b>VIOLA-LABRADOR VIOLET</b> <i>Viola labradorica</i>	6/6 in 15/15 cm	☀	purple	May to Sept.	moist soil	Purple leaves and flowers. Shorter rock garden violet.
<b>YARROW</b> <i>Achillea hybrids</i>	30/24 in 70/60 cm	☀	white	June to Sept.	well drained	Good for cutting fresh or dried flowers. Good for mass planting in the border.
<b>LOOSESTRIFE – YELLOW</b> <i>Lysimachia punctata</i>	36/24 in 90/60 cm	☀☀	yellow	June to Aug.	well drained	Upright bushy clumps form a large patch. Star-shaped flowers appear in leafy spikes.
<b>YUCCA</b> <i>Yucca glauca</i>	24/18 in 60/45 cm	☀	white	July	well drained	Succulent, evergreen, stiff leaves. Native. Extremely drought tolerant.
<b>WILD GINGER</b> <i>Asarum canadense</i>	6/8 in 15/20 cm	●	foliage	none	moist soil	Lush green ground cover plant.
<b>BARRENWORT</b> <i>Epimedium versicolor</i> 'Sulphureum'	12/12 in 30/30 cm	●	yellow	May to June	moist soil	Rare semi-evergreen foliage in various colors. Slow spreading ground cover for shaded areas.
<b>BLANKET FLOWER</b> <i>aristata</i> 'Fanfare'	14/12 in 32/30 cm	☀	red eye/ gold tip	June to Sept.	well drained	Daisy-like flowers with contrasting centre eye.
<b>BLANKET FLOWER</b> <i>aristata</i> 'Oranges & Lemons'	22/12 in 58/30 cm	☀	orange, yellow	June to Sept.	well drained	Daisy-like flowers with contrasting centre eye.
<b>BLAZING STAR</b> <i>Liatrus spicala</i> 'Floristan'	36/18 in 90/45 cm	☀	white	July to Sept.	well drained	Long lasting spikes good as cut flower. Beautiful border plant also called Gay Feather.
<b>CAT MINT</b> <i>Nepetax faassennii</i> 'Walkers Low'	10/20 in 25/48 cm	☀	Purple	July to Aug.	well drained	Perennial plant of the year. Best flower display.
<b>FALSE SUNFLOWER</b> <i>Heliopsis helianthoides</i> 'Loraine Sunshine'	48/24 in 120/60 cm	☀	yellow	July to Sept.	well drained	Variiegated foliage.
<b>FALSE SUNFLOWER</b> <i>Heliopsis helianthoides</i> 'Summer Nights'	48/24 in 120/60 cm	☀	yellow w/ red centre	July to Sept.	well drained	Large, long blooming, daisy-like flowers. Strong sturdy stems are good for cutting.
<b>JOE PYE WEED</b> <i>Eupatorium maculatum</i> 'Chocolate'	3/5 ft 1/1.5 m	☀	white	Aug. to Sept.	moist soil	Large plant with white flower heads. Attracts butterflies.
<b>MONKSHOOD</b> <i>Aconitum henryi</i> 'Sparks'	54/24 in 135/60 cm	☀☀	dark purple	July to Aug.	moist soil	Tall sturdy border perennial. Showy flower spikes good for cut flowers.
<b>MONKSHOOD</b> <i>Aconitum cam.</i> 'Pink Sensation'	54/24 in 135/60 cm	☀☀	pink	July to Aug.	moist soil	Tall sturdy border perennial. Showy flower spikes good for cut flowers.
<b>PEACHLEAF BELLFLOWER</b> <i>Campanula persicifolia</i> 'LaBelle'	36/18 in 90/45 cm	☀☀	purple	June to Aug.	well drained	Double blooms.

# Roses

Variety	Series	Height	Flower Colour	Fragrance	Features
<b>ADELAIDE HOODLESS</b>	Parkland	3 ft 1 m	bright red	light	Clusters of bright red continual flowers. Old-fashioned favorite rose.
<b>ALEXANDER MCKENZIE</b>	Explorer	6 ft 1.7 m	reddish pink	strong	Tall rose with continual fragrant blooms. Blooms similar to tea roses.
<b>BLANC DE COUBERT</b>	Rugosa	5 ft 1.5 m	clear white	strong	White fragrant flowers. Continual blooming.
<b>CAREFREE BEAUTY</b>	Shrub Rose	3 ft 1 m	pink	strong	Spreading growth habit; continual blooming. Blooms from spring until fall.
<b>CHAMPLAIN SAMUEL</b>	Explorer	4 ft 1.3 m	dark red	medium	The best red of the Explorer Series roses. Continual blooming from summer to frost.
<b>CHARLES ALBANEL</b>	Explorer	2 ft 0.6 m	medium pink	medium	Ground cover rose that is hardier than Flower Carpet. Repeat blooming from summer to frost.
<b>CHUCKLES</b>	Shrub Rose	2 ft 0.6 m	reddish pink	light	Continual blooming. Glossy green foliage, bushy plant.
<b>CPT. SAMUEL HOLLAND</b>	Explorer	6 ft 2 m	red	light	Trailing growth habit; continual blooming. Resistant to powdery mildew and black spot.
<b>CUTHBERT GRANT</b>	Parkland	3 ft 1 m	crimson red	light	Largest flowers of any Parkland or Explorer rose. Old-fashioned favorite rose; repeat blooms.
<b>DAVID THOMPSON</b>	Explorer	3 ft 1 m	deep pink	strong	Continual fragrant blooms. No rose hips.
<b>DE MONTARVILLE</b>	Explorer	3 ft 1 m	medium pink	medium/light	Continual blooming. Tight red buds open to a medium pink.
<b>F.J. GROOTENDORST</b>	Rugosa	5 ft 1.5 m	medium red	light	Carnation-like red flowers. Wrinkled foliage; Continual blooming.
<b>FRONTENAC</b>	Explorer	3.5 ft 1.3 m	deep pink	light	Flowers in clusters of up to eight; continual blooming. Resistant to powdery mildew and black spot.
<b>GEORGE VANCOUVER</b>	Explorer	3 ft 1 m	soft red	medium	Abundance of soft red flowers in clusters. Flowers in June and repeats all season.
<b>GOLDEN WINGS</b>	Shrub Rose	3 ft 1 m	golden yellow	medium	Golden yellow flowers; repeat through season. Recent introduction.
<b>HANSA</b>	Rugosa	5 ft 1.5 m	reddish purple	strong	Hardy popular fragrant rose; repeat blooms. Unique reddish-violet flowers for a shrub rose.
<b>HARRISON YELLOW</b>	Rosa foetida	5 ft 1.5 m	sulfur yellow	medium	One-time mass of blooms. Substitute for Persian Yellow Rose.
<b>HENRY HUDSON</b>	Explorer	2 ft 0.6 m	pinkish white	light	Pink flower buds open up into white flowers. Repeat blooming from summer to frost.
<b>HENRY KELSEY</b>	Explorer	7 ft 2 m	reddish pink	medium	Tall trailing rose may be trained as a climber. Repeat blooming from summer to frost.
<b>HOPE FOR HUMANITY</b>	Parkland	3 ft 1 m	dark red	light	Repeat blooms; dark red semi-double blooms. Commemorates 100th Anniversary Canadian Red Cross.
<b>HUNTER</b>	Rugosa	3 ft 1 m	red	medium	Brilliant red, fully double blooms; repeat. Clean, dark-green glossy foliage.
<b>J.P. CONNELL</b>	Explorer	4.5 ft 1.5 m	pale yellow	light	Vigorous, upright shrub; repeat. First yellow in the Explorer Series.
<b>JENS MUNK</b>	Explorer	4 ft 1.3 m	medium pink	strong	Continual fragrant blooms.
<b>JOHN CABOT</b>	Explorer	7 ft 2 m	medium pink	strong	Tall climbing fragrant rose. Repeat blooms all season.
<b>JOHN DAVIS</b>	Explorer	7 ft 2 m	medium pink	strong	Tall rambling rose may be trained as a climber. Continual blooms all season.
<b>JOHN FRANKLIN</b>	Explorer	3 ft 1 m	medium red	medium	Continual blooms all season. Disease-resistant foliage.
<b>LAMBERT CLOSSE</b>	Explorer	3 ft 1 m	pale pink	strong	Extremely healthy shrub. Blooms similar to tea roses: repeat bloomer.

# Roses

Variety	Series	Height	Flower Colour	Fragrance	Features
<b>LINDA CAMPBELL</b>	Explorer	5-6 ft 2 m	red with yellow	light	Cross between a miniature and a rugosa. Long arching canes; repeat bloomer.
<b>LOIS JOLLIET</b>	Explorer	4-5 ft 1.5 m	medium pink	light	Continuous blooms from summer to frost. Disease resistant.
<b>MARTIN FROBISHER</b>	Explorer	5 ft 1.5 m	light pink	strong	First introduced Explorer Series rose. Continual fragrant blooms.
<b>MORDEN AMORETTE</b>	Parkland	3 ft 1 m	deep pink	light to medium	Continuous blooms from summer to frost.
<b>MORDEN BLUSH</b>	Parkland	3-4 ft 1.25 m	light pink	medium	Repeat hybrid tea-type flowers; low growing rose. Longest blooming period of any shrub rose.
<b>MORDEN CARDINETTE</b>	Parkland	2 ft 0.6 m	cardinal red	light	Low growing rose. Ever-blooming flowers.
<b>MORDEN CENTENNIAL</b>	Parkland	3 ft 1 m	medium pink	medium	Plentiful production of hot pink flowers: repeat bloomer. Named after centennial commemorating Morden.
<b>MORDEN FIREGLOW</b>	Parkland	2 ft 0.6 m	scarlet red	light	Unique scarlet red flowers repeat all season. Low growing rose.
<b>MORDEN RUBY</b>	Parkland	3 ft 1 m	ruby red	light	Clusters of ruby red flowers repeat all season. A real jewel in the Morden series.
<b>MORDEN SUNRISE</b>	Parkland	3 ft 1 m	orange blend	medium	Continuous blooms from summer to frost. Citrus fragrance.
<b>NEARLY WILD</b>	Shrub Rose	3 ft 1 m	medium pink	medium	Lots of color; ever blooming. Proven cold weather performer.
<b>PERSIAN YELLOW</b>	Rosa foetida	6 ft 1.7 m	deep yellow	strong	Tall popular rose with deep yellow flowers. One time profusion of blooms.
<b>PINK GROOTENDORST</b>	Rugosa	5 ft 1.5 m	medium pink	light	Carnation-like, pink flowers. Wrinkled foliage.
<b>PRAIRIE DAWN</b>	Shrub Rose	5 ft 1.5 m	medium pink	light	Continual blooms all season. Glossy foliage.
<b>PRAIRIE JOY</b>	Shrub Rose	4 ft 1.3 m	medium pink	medium	Hedge-type rose for screening; repeats all season. Dense foliage displays disease resistance.
<b>RED LEAF</b>	Rosa rubrifolia	5 ft 1.5 m	light pink	medium	Reddish-purple, popular foliage. Red hips and branches; flowers in June.
<b>ROYAL EDWARD</b>	Explorer	20 in 50 cm	deep pink	medium	Low growing rose; repeat blooms all season. Disease resistant.
<b>SIMON FRASER</b>	Explorer	2 ft 0.6 m	medium pink	medium	Low growing rose. Continual blooms all season.
<b>SIR THOMAS LIPTON</b>	Rugosa	7 ft 2 m	pure white	strong	Tall rose with pure white, large fragrant flowers. Leathery foliage; repeat blooms all season.
<b>THERESA BUGNET</b>	Rugosa	6 ft 1.7 m	medium pink	medium	Tall rose with large flowers; repeat all season. Old-fashioned favorite rose.
<b>TOPAZ JEWEL</b>	Rugosa	5 ft 1.5 m	butter yellow	medium	Butter to cream yellow flowers. First ever blooming yellow rugosa rose.
<b>WILLIAM BAFFIN</b>	Explorer	7 ft 2 m	medium pink	light	Tall climbing rose. Blooms repeat all season.
<b>WILLIAM BOOTH</b>	Explorer	4-5 ft 1.5 m	pink	light	Disease resistant. Continuous blooms from summer to frost.
<b>WINNIPEG PARKS</b>	Parkland	2 ft 0.6 m	deep pink	medium	Popular hardy, low growing rose. Ever blooming.

## Tea Roses!

### Buy 1 Get 1 FREE (of equal or lesser value)

Present this coupon on any Wednesday in July 2008

Limit One Coupon Per Customer/ Per Purchase While Quantities Last



## New to the Tree Lot for 2008

### **Parkland Garden Center would like you to discover:**

**Sester Dwarf Spruce** is a blue needled spruce that is conical-shaped and great for small yards. Hardy to Zone 2, this is the best dwarf blue spruce we've seen.

**Goldspur Amur Cherry** is a new introduction from Manitoba. Hardy to Zone 2, Goldspur is a dwarf selection. This tree is disease resistant and is not prone to frost cracks as bad as its parent tree.

**Fall Fiesta Sugar Maple** is a new maple to us this season. This tree is very colorful in the fall and adds that splash of orange-red foliage to your yard.

**Northern Acclaim Locust** is a medium to large tree and is seedless to stop those trees popping up everywhere in the yard. Fast growing and hardy to Zone 3, this is a new tree for our area.

**Gladiator Crabapple** is a new form of columnar apple tree. An Ornamental tree, it has purple leaves all year long and pink flowers in the spring.

**Eona Grape**, new to the fruit section, is a small white grape used for wine making. Hardy to Zone 3.

**Morechal Foch Grape** is another new form of hardy grape. Known for its red fruit, it is used as well for wine making. This grape may require covering for the winter, but ripens early to beat the first frost.

This year we will also be carrying a wide range of evergreens in topiary form such as:

**Gold Star Juniper Pompom**      **Blue Point Juniper Spiral & Pompom**  
**Wichita Blue Juniper Spiral**      **Skyrocket Juniper Spiral**  
**Globe Blue Spruce on a standard**      **Dwarf Scotch Pine on a standard**  
**Scotch Pine Cloud pruned**

The new roses for 2008 are **Black Bacarra Tea Rose** as well as two AARS winners, **Dream Come True** and **Mardi Gras Tea Rose**. Even though there are no new hardies to announce as new, there is a New Flower Carpet Rose called **Pink Supreme**. It will knock your socks off with all of its blooms.

### **CRAFT & MARKET SALES**

**SATURDAY, NOV. 8, 15, 22, 29 & DEC. 13, 2008**

**ADMISSION IS FREE**

**We ask that you bring a non-perishable item for the food bank.**

## Small Fruit

Name	Fruit Colour	Height / Spread	Sun / Shade	Fruit Features / Uses
<b>Blueberries</b>				
<b>NORTHCOUNTRY</b>	sky blue	3/3 ft (0.9-0.9 m)	☀️	Mild, sweet, sky-blue fruit.
<b>PATRIOT</b>	medium blue	3/3 ft (0.9-0.9 m)	☀️	Large berries with high yield and excellent flavor.
<b>NORTHLAND</b>	dark blue	4/4 ft (1.2-1.2 m)	☀️	Wild berry tasting, dark blue fruit.
<b>NORTHSKY</b>	sky blue	2/2 ft (0.6-0.6 m)	☀️	Blueberry with sweet, sky-blue fruit.
<b>POLARIS</b>	light blue	3/3 ft (0.9-0.9 m)	☀️	Best ripening in northern gardens; new variety.
<b>NORTHBLUE</b>	dark blue	3/3 ft (0.9-0.9 m)	☀️	Dark blue, sweet flavored fruit.
<b>Cherries</b>				
<b>NANKING</b>	red	10/10 ft (3-3 m)	☀️	Edible cherries great for jelly.
<b>CHOCKECHERRY 'GARRINGTON'</b>	purple/black		☀️	Great for canning.
<b>LEE'S BLACK CHERRY</b>	dark burgundy	7/7 ft (2.1-2.1 m)	☀️	Great for jams and jellies.
<b>Currants</b>				
<b>BLACK</b>	black	3/3 ft (0.9-0.9 m)	☀️	Abundant black fruit for preserves.
<b>RED LAKE</b>	red	3/3 ft (0.9-0.9 m)	☀️	Plentiful fruit produced for jelly.
<b>Gooseberries</b>				
<b>PIXWELL</b>	green	3/3 ft (0.9-0.9 m)	☀️	Productive fruit producer for preserves.
<b>HINNONMAEKI RED</b>	red	3/3 ft (0.9-0.9 m)	☀️	Tart red, juicy fruit for preserves.
<b>Grapes</b>				
<b>BETA</b>	blue/black		☀️	Excellent for juice or jelly, vigorous.
<b>VALIANT</b>	blue		☀️	Hardest grape for the prairies used for jelly.
<b>Honeyberry</b>				
<b>BERRY BLUE HONEY-BERRY</b>	blue	4.5/4.5 ft (2-2m)	☀️	Yellow/white, flavors like wild blueberries, you need 2 varieties.
<b>Raspberries</b>				
<b>BOYNE</b>	red	5/5 ft (1.5-1.5 m)	☀️	Hardy, heavy producer of sweet red berries.
<b>HERITAGE</b>	red	5/5 ft (1.5-1.5 m)	☀️	Everbearing producer in September.
<b>FALL GOLD</b>	gold/yellow	5/5 ft (1.5-1.5 m)	☀️	New everbearing variety with unique gold fruit.
<b>Saskatoons</b>				
<b>HONEYWOOD</b>	purple	7/5 ft (2.1-1.5 m)	☀️	Later large fruit for eating fresh or pies.
<b>NORTHLINE</b>	purple	7/5 ft (2.1-1.5 m)	☀️	Productive fruit producer to eat fresh or pies.
<b>PEMBINA</b>	purple	10/7 ft (3- 2.1 m)	☀️	Well-known variety with large fruit to eat.
<b>REGENT</b>	purple	7/5 ft (2.1-1.5 m)	☀️	Sweet fruit is good for eating fresh or pies.
<b>SMOKEY</b>	purple	10/7 ft (2.1-1.5 m)	☀️	High yielding variety with mild, sweet fruit.
<b>THEISSEN</b>	purple	10/5 ft (2.1-1.5 m)	☀️	Large fruit is good for eating fresh or pies.
<b>JB30</b>	purple	8/8 ft (3-3m)	☀️	A new cultivar that has good yields.

**CHECK OUT OUR WEB SPECIALS! Coupons available on line  
@ [www.parklandgarden.ca](http://www.parklandgarden.ca)**

# Shrubs

Variety	Height	Spread	Sunlight	Zone	Colour	Features
<b>ARNOLD RED HONEYSUCKLE</b> <i>Lonicera tatarica</i> 'Arnold Red'	10 ft 3 m	5 ft 1.5 m	☉☀	3	dark red	Dark red fruit follow dark red fragrant flowers. Berries attract birds.
<b>AUTUMN MAGIC CHOKECHERRY</b> <i>Aronia melanocarpa</i>	5 ft 1.6 m	3 ft 1 m	☀	3	white	Abundant edible black cherries attract birds in fall. Red fall color.
<b>CENTENNIAL WEIGELA</b> <i>Weigela florida</i> 'Centennial'	5 ft 1.6 m	5 ft 1.6 m	☀	3	pink	Pink tubular flowers in June and reblooms later. Suitable replacement for honeysuckle.
<b>CHERRY PRINSEPIA</b> <i>Prinsepia sinensis</i>	5 ft 1.5 m	3 ft 1 m	☀	2	yellow	Spiny hardy shrub for the Prairies with red fruit. Useful as an armed barrier plant.
<b>CHOCKEBERRY</b> <i>Aronia melanocarpa</i> 'Autum Majic'	5 ft 1.5 m	5 ft 1.5 m	☀	3	white	Purplish blackberries make this shrub outstanding in the fall.
<b>COTONEASTER</b> <i>Hedge or Peking Cotoneaster acutifolia</i> <i>/ lucida</i>	7 ft 2 m	5 ft 1.5 m	☀	2	light pink	Most widely used hedge plant! Glossy green leaves turn red in fall. Available in spring and fall bare root or pot plant.
<b>DOUBLEFLOWERING PLUM</b> <i>Prunus triloba</i> 'Multiplex'	7 ft 2.3 m	5 ft 1.5 m	☀	3	pink	Emergence of flowers signifies spring arrival. Spectacular pink double flowers before leaves.
<b>DWARF BROOM</b> <i>Genista lydia</i>	2 ft 0.6 m	3 ft 1 m	☀	4	yellow	Fine textured sprawling shrub. Flowers in June. Profusion of flowers along unique green stems.
<b>MINIGLOBE HONEYSUCKLE</b> <i>Lonicera xylasteoides</i> 'Miniglobe'	3 ft 1 m	3 ft 1 m	☉☀	3	white	Miniature globe-shaped Honeysuckle. Compact foliage plant for foundation planting.
<b>MINUET WEIGELA</b> <i>Weigela florida</i> 'Minuet'	2 ft 60 cm	2 ft 60 cm	☉☀	3	dark pink	Slightly fragrant purplish-red tinted foliage on dark green.
<b>NANKING CHERRY</b> <i>Prunus tomentosa</i>	10 ft 3 m	7 ft 2 m	☀	2	light pink	Red edible cherries are great for jelly. Our most popular large flowering shrub.
<b>NORTHERNGOLD FORSYTHIA</b> <i>Forsythia ovata</i> 'Northern Gold'	5 ft 1.5 m	3 ft 1 m	☉☀	3	yellow	Profusion of yellow flowers early in spring. Harbinger of spring and earliest flowering shrub.
<b>PURPLE LEAF SANDCHERRY</b> <i>Prunus cistena</i>	7 ft 2.3 m	5 ft 1.6 m	☀	3	light pink	Spectacular purple foliage on this accent plant. Most popular shrub for color contrast.
<b>ROSE DAPHNE</b> <i>Daphne cneonrum</i>	1 ft 0.3 m	2 ft 0.6 m	☉☀	4	pink	Fragrant flowers first thing in spring. Suitable for area insulated by snow cover.
<b>RUSSIAN ALMOND</b> <i>Prunus tenella</i>	5 ft 1.6 m	5 ft 1.6 m	☀	3	pink	Plum-like, fuzzy almonds. Small shrub for mass planting.
<b>RUSSIAN OLIVE</b> <i>Elaeagnus angustifolia</i>	16 ft 5 m	13 ft 4 m	☀	3 - 4	yellow	Outstanding silvery foliage. Large multi-stemmed shrub or small specimen tree.
<b>SEA BUCKTHORN</b> <i>Hippophae rhamnoides</i>	13 ft 4 m	10 ft 3 m	☀	2	yellow	Thorny shrub with silver linear leaves, orange berries. Drought tolerant and hardier than Russian Olive.
<b>SNOWBERRY</b> <i>Symphoricarpos albus</i>	3 ft 1 m	3 ft 1 m	●☀	2	pink	Native hardy, small shrub. White berries in winter attract wildlife.
<b>WESTERN SAND CHERRY</b> <i>Prunus besseyi</i>	3 ft 1 m	3 ft 1 m	☀	3	white	Olive-green leaves and black sour cherries. Sprawling shrub is used as late plum pollinator.
<b>Barberry</b>						
<b>CHERRY BOMB BARBERRY</b> <i>Berberis thunbergii</i> 'Monomb'	3 ft 1 m	3 ft 1 m	☀	3	n/a	Deep crimson red foliage on a rounded shrub.
<b>ROSE GLOW BARBERRY</b> <i>Berberis thunbergii</i> 'Rose Glow'	3 ft 1 m	3 ft 1 m	☀	3	n/a	Mottled pink-rose on burgundy foliage. This plant actually turns hot pink in the fall.
<b>ROYAL BURGANDY BARBERRY</b> <i>Berberis burgandy</i> 'Gentry'	24 in 60 cm	3 ft 1 m	☀	3	n/a	Deep burgundy red foliage on arching stems.
<b>RUBY CAROUSEL BARBERRY</b> <i>Berberis thunbergii</i> 'Bailone'	3 ft 1 m	3 ft 1 m	☀	3	n/a	Beautiful red-purple leafed shrub selected for its low rounded uniform habit.
<b>SUNSATIION BARBERRY</b> <i>Berberis thunbergii</i> 'Monry'	3 ft 1 m	3 ft 1 m	☀	3	n/a	Slow growing compact golden shrub, orange fall color.

☉ = part sun ● = shade ☀ = sun

# Shrubs

Variety	Height	Spread	Sunlight	Zone	Colour	Features
<b>Caragana</b>						
<b>COMMON CARAGANA</b> <i>Caragana arborescens</i>	13 ft 4 m	7 ft 2 m	☉☼	2	yellow	Siberian pea-shrub. Drought tolerant. Excellent hedge, shelterbelt or windbreak.
<b>FERNLEAF CARAGANA</b> <i>Caragana arborescens 'Lorbergii'</i>	13 ft 4 m	10 ft 3 m	☉☼	2	yellow	Lacy leaves on this graceful plant. Yellow flowers in spring.
<b>GLOBE CARAGANA</b> <i>Caragana frutex 'Globosa'</i>	3 ft 1 m	3 ft 1 m	☉☼	2	yellow	Globe-shaped shrub that requires no pruning. One of the woody plants of year in 1996, 97 & 98.
<b>PYGMY CARAGANA</b> <i>Caragana pygmaea</i>	3 ft 1 m	5 ft 1.5 m	☉☼	2	yellow	Spiny shrub with spring flowers. Useful armed hedge plant for dry area.
<b>SUTHERLAND CARAGANA</b> <i>Caragana arborescens 'Sutherland'</i>	13 ft 4 m	5 ft 1.5 m	☉☼	2	yellow	Tall, columnar, accent plant. Also attractive in row plantings as a tall hedge.
<b>WALKERS WEEPING CARAGANA</b> <i>Caragana arborescens 'Walker's'</i>	5 ft 1.5 m	3 ft 1 m	☉☼	2	yellow	Fine lacy foliage hangs from weeping branches. Graceful specimen plant for formal appearance.
<b>WEEPING CARAGANA</b> <i>Caragana arborescens 'Pendula'</i>	7 ft 2 m	3 ft 1 m	☉☼	2	yellow	Weeping, grafted variety with oval leaflets. Yellow flowers in spring.
<b>Currant</b>						
<b>ALPINE CURRANT</b> <i>Ribes alpinum</i>	5 ft 1.5 m	5 ft 1.5 m	☉☼	2	green	Small green flowers and lobed leaves. Used for mass planting.
<b>GOLDEN CURRANT</b> <i>Ribes aureum</i>	5 ft 1.5 m	5 ft 1.5 m	☉☼	3	gold-yellow	Fragrant flowers in spring; good for hedging. Dark berries are good for jelly.
<b>Dogwood</b>						
<b>BUDS YELLOW</b> <i>Cornus alba 'Buds Yellow'</i>	7 ft 2 m	7 ft 2 m	☉☼	3	white	Yellow stems for winter color.
<b>IVORY HALO DOGWOOD</b> <i>Cornus alba 'Ivory Halo'</i>	5-7 ft 1.5-2.3m	5-7 ft 1.5-2.3 m	☉☼	3	white	Bright red stems and silver variegated leaves. Very compact and slow growing.
<b>KELSEY DOGWOOD</b> <i>Cornus sericea 'Kelseyi'</i>	2 ft 0.6 m	2 ft 0.6 m	☉☼	3	white	Dwarf selection of Red Osier Dogwood. Suitable ground cover for shaded, moist area.
<b>KESSELRING DOGWOOD</b> <i>Cornus alba 'Kesselringii'</i>	5 ft 1.5 m	5 ft 1.5 m	☉☼	3	white	Deep purple stems are outstanding in winter. Suitable shrub for shaded, moist area.
<b>RED OSIER DOGWOOD</b> <i>Cornus sericea stolonifera</i>	7 ft 2.3 m	5 ft 1.5 m	☉☼	3	white	Red stems for winter color. Native shrub spreads by stolons.
<b>Elder</b>						
<b>GOLDEN ELDER</b> <i>Sambucus anadensis 'Aurea'</i>	7 ft 2.3 m	5 ft 1.5 m	☼	3	white	Golden yellow foliage color in summer and fall. Quick grower can be cut down to ground level.
<b>GOLDEN PLUME ELDER</b> <i>Sambucus 'Plumosa Aurea'</i>	7 ft 2.3 m	5 ft 1.5 m	☼	3	cream	Golden yellow, deeply serrated leaves. Flower clusters on new wood.
<b>RED ELDER</b> <i>Sambucus racemosa</i>	10 ft 3 m	7 ft 2.3 m	☼	3	cream	Sharply serrated green leaflets. Red fruit used for jelly and wine.
<b>SUTHERLAND CUTLEAF ELDER</b> <i>Sambucus racemosa 'Sutherland'</i>	7 ft 2.3 m	7 ft 2.3 m	☼	3	cream	Golden yellow dissected leaves. Foliage is a good color contrast.
<b>Euonymus</b>						
<b>BURNING BUSH - DWARF WINGED</b> <i>Euonymus alata compacta</i>	6 ft 2 m	10 ft 3 m	☉☼	2		Flaming red fall color. Excellent for small shrub beds and hedges.
<b>BURNING BUSH TURKESTAN</b> <i>Euonymus nanus 'Turkestanica'</i>	1.5 ft 0.5 m	3 ft 1 m	☉☼	2	pink	Low sprawling biblical shrub with linear leaves. Rose fall foliage color appears to be burning.
<b>BURNING BUSH WINGED</b> <i>Euonymus alata</i>	5 ft 1.5 m	3 ft 1 m	☉☼	3	yellow	Green foliage turns rose color in fall. Curious corky bark is attractive winter feature.
<b>FIREBALL BURNING BUSH</b> <i>Euonymus alatus 'Select'</i>	3 ft 1 m	3 ft 1 m	☉☼	3	pink	Compact tighter branching and improved winter hardiness.

# Shrubs

Variety	Height	Spread	Sunlight	Zone	Colour	Features
<b>Fruit Shrubs</b>						
<b>NANKING CHERRY</b> <i>Prunus tomentosa</i> 'Lee's Black'	10 ft 3 m	7 ft 2 m	☀	2	light pink	Black-fruited variety. Good for jellies; popular with birds.
<b>SWEETBERRY HONEYSUCKLE</b> <i>Lonicera caerulea</i> 'Edulis'	5 ft 1.5 m	3 ft 1 m	☀	3	white	Compact shrub with shredding bark. Palatable blue fall fruit attracts birds.
<b>Hydrangea</b>						
<b>ANNABELLE HYDRANGEA</b> <i>Hydrangea arborescens</i> 'Annabelle'	3 ft 1 m	3 ft 1 m	☀	3 - 4	white	Showy, large, white, flat flower clusters. Suitable shrub for shaded, moist area.
<b>ENDLESS SUMMER HYDRANGEA</b> <i>Hydrangea macrophylla</i> 'Bailmer'	3 ft 1 m	3 ft 1 m	☀	3 - 4	pink-blue	Produces flowers on new wood. Remember this shrub dies down and comes back.
<b>PEEGEE HYDRANGEA</b> <i>Hydrangea paniculata</i> 'Grandiflora'	3 ft 1 m	3 ft 1 m	☀	3 - 4	light pink	Showy, large, pinkish pyramidal flower clusters. Suitable shrub for shaded, moist area.
<b>QUICKFIRE HYDRANGEA</b> <i>Hydrangea paniculata</i> 'Bulk'	7 ft 2 m	8 ft 2.6 m	☀	4	red/pink	Proven Winners introduction and it blooms a month earlier.
<b>Lilics</b>						
<b>BEAUTY OF MOSCOW LILAC</b> <i>Syringa vulgaris</i> 'Krasavitsa Moskvyy'	10 ft 3 m	7 ft 2.3 m	☀☀	2	pink	Very heavy bloomer; double pink flowers. Good screening plant or feature.
<b>CHARLES JOLY - FRENCH LILAC</b> <i>Syringa vulgaris</i> 'Charles Joly'	10 ft 3 m	7 ft 2.3 m	☀☀	3	reddish purple	Grafted roots to control suckering. Reddish purple, double fragrant flowers.
<b>COMMON LILAC</b> <i>Syringa vulgaris</i>	10 ft 3 m	7 ft 2.3 m	☀☀	2	purple	Old fashioned favorite with fragrant flowers. Has suckering habit but good in windbreaks.
<b>DWARF KOREAN LILAC</b> <i>Syringa meyeri</i> 'Palibin'	3 ft 1 m	3 ft 1 m	☀☀	3	lavender	Miniature leaves and flowers fit into small yards. One of the woody plants of the year in 1996 and 97.
<b>KATHERINE HAVEMEYER - FRENCH LILAC</b> <i>Syringa vulgaris</i> 'Katherine Havemer'	10 ft 3 m	7 ft 2.3 m	☀☀	3	bluish pink	Grafted roots to control suckering. Pink double fragrant flowers.
<b>MADAME LEMOINE - FRENCH LILAC</b> <i>Syringa vulgaris</i> 'Madame Lemoine'	10 ft 3 m	7 ft 2.3 m	☀☀	3	white	Grafted roots to control suckering. White double fragrant flowers.
<b>MISS CANADA PRESTON LILAC</b> <i>Syringa prestoniae</i> 'Miss Canada'	10 ft 3 m	7 ft 2.3 m	☀☀	3	pink	Vigorous non-suckering shrub. Pink single flowers later than French Lilac.
<b>MISS KIM LILAC</b> <i>Syringa patula</i> 'Miss Kim'	5 ft 1.6 m	3 ft 1 m	☀☀	3	lavender	Larger leaves and later flowering than Korean. Substitute for Korean Lilac. Purplish fall foliage.
<b>PRESIDENT GREVY - FRENCH LILAC</b> <i>Syringa vulgaris</i> 'President Grevy'	10 ft 3 m	7 ft 2.3 m	☀☀	3	blue	Grafted roots to control suckering. Blue double fragrant flowers.
<b>ROYALTY PRESTON LILAC</b> <i>Syringa prestoniae</i> 'Royalty'	10 ft 3 m	7 ft 2.3 m	☀☀	3	purple	Vigorous non-suckering shrub. Purple single flowers later than French Lilac.
<b>SENSATION - FRENCH LILAC</b> <i>Syringa vulgaris</i> 'Sensation'	10 ft 3 m	7 ft 2.3 m	☀☀	3	purple & white	Grafted roots to control suckering. Sensational purple flowers with white edges.
<b>VILLOSA or LATE LILAC</b> <i>Syringa villosa</i>	10 ft 3 m	7 ft 2.3 m	☀☀	2	lavender	Hardy, drought tolerant hedge or windbreak. Purple single flowers later than French Lilac.
<b>Mockorange</b>						
<b>MINNESOTA SNOWFLAKE MOCKORANGE</b> <i>Philadelphus</i> 'Minnesota Snowflake'	5 ft 1.6 m	3 ft 1 m	☀☀	3	white	Most fragrant flowering shrub. Double white flowers in summer.
<b>VIRGINAL MOCKORANGE</b> <i>Philadelphus virginialis</i>	8 ft 2.6 m	4 ft 1.3 m	☀☀	4	white	Double, white very fragrant flowers. Can be leggy; requires pruning.
<b>WATERTON MOCKORANGE</b> <i>Philadelphus lewisii</i> 'Waterton'	7 ft 2.3 m	5 ft 1.5 m	☀☀	2	white	Most fragrant flowering shrub with lilac & rose. Hardy Mockorange from Waterton Park in Alberta.
<b>Ninebark</b>						
<b>CENTER GLOW NINEBARK</b> <i>Physocarpus opulifolius</i> 'Center Glow'	5 ft 1.5 m	5 ft 1.5 m	☀☀	3	white	Foliage emerges gold and changes to burgandy.

☀ = part sun ● = shade ☀ = sun

# Shrubs

Variety	Height	Spread	Sunlight	Zone	Colour	Features
<b>COPPERTINA NINEBARK</b> <i>Physocarpus opulifolius 'Mindia'</i>	6 ft 2 m	4 ft 1.5 m	☀️	3	white	New foliage is copper color, which turns red in summer.
<b>DART'S GOLD NINEBARK</b> <i>Physocarpus opulifolius 'Dart's Gold'</i>	3 ft 1 m	3 ft 1 m	☀️	3	white	Deep pink fruit appear in late summer. Compact, attractive golden shrub.
<b>DIABOLO NINEBARK</b> <i>Physocarpus opulifolius 'Diabolo'</i>	7 ft 2.3 m	5 ft 1.5 m	☀️	3	white	Flowers in summer. Strong, upright growth.
<b>NUGGET NINEBARK</b> <i>Physocarpus opulifolius 'Nugget'</i>	5 ft 1.6 m	4 ft 1.3 m	☀️	3	white	Foliage turns lime green as season progresses. White flowers in early spring.
<b>Potentilla</b>						
<b>ABBOTSWOOD POTENTILLA</b> <i>Potentilla fruticosa 'Abbotswood'</i>	3 ft 1 m	3 ft 1 m	☀️	2	white	Most popular white flowering potentilla. Potentilla bloom continuously all summer.
<b>GOLDFINGER POTENTILLA</b> <i>Potentilla fruticosa 'Goldfinger'</i>	5 ft 1.6 m	3 ft 1 m	☀️	2	dark yellow	Popular and largest yellow flowering potentilla. Named for notorious Goldfinger in James Bond.
<b>GOLDSTAR POTENTILLA</b> <i>Potentilla fruticosa 'Goldstar'</i>	2 ft 0.6 m	3 ft 1 m	☀️	2	golden yellow	Golden yellow flowers on this dwarf shrub. Potentilla bloom continuously all summer.
<b>MANGO TANGO POTENTILLA</b> <i>Potentilla fruticosa 'Mango Tango U man'</i>	3 ft 1 m	3 ft 1 m	☀️	2	golden yellow	Golden yellow blooms.
<b>ORANGE WHISPER POTENTILLA</b> <i>Potentilla fruticosa 'Orange Whisper'</i>	3 ft 1 m	3 ft 1 m	☀️	2	orange	Orange flowers on this uniform mounded shrub. Potentilla bloom continuously all summer.
<b>ORANGEADE POTENTILLA</b> <i>Potentilla fruticosa 'Orangeade'</i>	1 ft 30 cm	2 ft 60 cm	☀️	2	orange	Plant shows more of spreading habit. Keeps its color well.
<b>PINK BEAUTY POTENTILLA</b> <i>Potentilla fruticosa 'Pink Beauty'</i>	3 ft 1 m	3 ft 1 m	☀️	2	pink	Double pink flowers on this mounding shrub. New introduction from Manitoba.
<b>TANGERINE POTENTILLA</b> <i>Potentilla fruticosa 'Tangerine'</i>	3 ft 1 m	3 ft 1 m	☀️	2	amber	Amber flowers on this spreading shrub. Potentilla bloom continuously all summer.
<b>YELLOW GEM POTENTILLA</b> <i>Potentilla fruticosa 'Yellow Gem'</i>	1.5 ft 0.5 m	3 ft 1 m	☀️	2	bright yellow	Bright yellow flowers on this spreading shrub. Potentilla bloom continuously all summer.
<b>Rhododendron</b>						
<b>PJM COMPACT RHODODENDRON</b> <i>Rhododendron 'PJM Compact'</i>	3 ft 1 m	3 ft 1 m	☀️	4	pink	Compact version of above plant. Likes acidic peaty soil. Hardest Rhododendron.
<b>PJM RHODODENDRON</b> <i>Rhododendron 'PJM'</i>	3 ft 1 m	3 ft 1 m	☀️	4	pink	Showy trumpet-shaped blooms early in spring. Likes acidic peaty soil. Hardest Rhododendron.
<b>ROSY LIGHTS AZALEA</b> <i>Rhododendron x 'Rosy Lights'</i>	3 ft 1 m	3 ft 1 m	☀️	4	pink	Showy double flower clusters in late spring. Plant in sheltered area in moist peaty soil.
<b>Spirea</b>						
<b>ANTHONY WATERER SPIREA</b> <i>Spiraea bumalda 'Anthony Waterer'</i>	2 ft 0.6 m	3 ft 1 m	☀️	3	pink	Low growing shrub with long blooming season. Well-known variety with colorful foliage.
<b>ASHLEAF or FALSESPIREA</b> <i>Sorbaria sorbifolia</i>	7 ft 2 m	7 ft 2 m	☀️	2	creamy white	Spreading shrub which will grow in any landscape. Lacy foliage produces plumes of flowers.
<b>BRIDAL WREATH SPIREA</b> <i>Spiraea vanhouttei</i>	7 ft 2.3 m	5 ft 1.6 m	☀️	3	white	Arching branches veiled with white flowers in June. Tall upright spreading shrub.
<b>FAIRY QUEEN SPIREA</b> <i>Spiraea trilobata 'Fairy Queen'</i>	2 ft 0.6 m	2 ft 0.6 m	☀️	3	white	Low sprawling shrub with white flowers in June. Cultivar of three-lobed spirea.
<b>FROBELLII SPIREA</b> <i>Spiraea bumalda 'Frobellii'</i>	3 ft 1 m	3 ft 1 m	☀️	2	pink	Similar to Anthony Waterer but hardier & taller. Frobellii is an old-fashioned favorite.
<b>GARLAND SPIREA</b> <i>Spiraea arguta compacta</i>	3 ft 1 m	3 ft 1 m	☀️	3	white	Spring blooming Spirea with garlands of flowers. Dwarf compact shrub with fine-textured foliage.
<b>GOLDFLAME SPIREA</b> <i>Spiraea bumalda 'Goldflame'</i>	3 ft 1 m	3 ft 1 m	☀️	3	pink	Compact shrub for color contrast in the landscape. Popular colorful shrub.

# Shrubs

Variety	Height	Spread	Sunlight	Zone	Colour	Features
<b>GOLDMOUND SPIREA</b> <i>Spiraea japonica</i> 'Goldmound'	2 ft 0.6 m	3 ft 1 m	☉☼	3 – 4	pink	Similar to and a substitute for Goldflame spirea. Dwarf compact colorful shrub.
<b>LITTLE PRINCESS SPIREA</b> <i>Spiraea japonica</i> 'Little Princess'	2 ft 0.6 m	3 ft 1 m	☉☼	4	pink	Dwarf compact mound shape on this small shrub. Foliage turns dark red in fall.
<b>MAGIC CARPET SPIREA</b> <i>Spiraea japonica</i> 'Magic Carpet'	1 ft 0.3 m	3 ft 1 m	☉☼	4	pink	Forms a miniature mound; compact Goldflame Gold to red foliage.
<b>RENAISSANCE SPIREA</b> <i>Spiraea vanhouttei</i> 'Renaissance'	4 ft 1.3 m	4 ft 1.3 m	☉☼	3	white	Graceful arching displays of white flowers. Blooms mid to late spring.
<b>SHIROBANA SPIREA</b> <i>Spiraea japonica</i> 'Shirobana'	3 ft 1 m	3 ft 1 m	☉☼	4	pink & white	Serrated lacy foliage with pink, red & white flowers. Tri-colored flowers create curious accent.
<b>Sumac</b>						
<b>SMOOTH CUTLEAF SUMAC</b> <i>Rhus glabra</i> 'Lacinata'	7 ft 2.3 m	7 ft 2.3 m	☼	3	yellow	Smooth bark and divided, lacy leaves. Tolerates atmospheric pollution. Red fall fruit.
<b>STAGHORN SUMAC</b> <i>Rhus typhina</i>	10 ft 3 m	5 ft 1.6 m	☼	3	green	Hairy, fern-like foliage. Red fall fruit & foliage. Shrub spreads by suckering. Xeriscape plant.
<b>TIGER EYES SUMAC</b> <i>Rhus typhina</i> 'Bailitiger'	5 ft 1.5 m	5 ft 1.5 m	☼	3-4	yellow	Known for its intense fall color. Protection is needed.
<b>Viburnum</b>						
<b>AMERICAN HIGH BUSH CRANBERRY</b> <i>Viburnum trilobum</i>	10 ft 3 m	7 ft 2 m	●☼	2	white	Green lobed leaves turn red in the fall. Suitable for shaded moist areas.
<b>BAILEY COMPACT CRANBERRY</b> <i>Viburnum trilobum</i> 'Bailey Compact'	5 ft 1.6 m	2 ft 0.6 m	●☼	2	white	Compact shrub with colorful red fall foliage. Suitable for shaded moist areas.
<b>BLUE MUFFIN ARROWWOOD</b> <i>Viburnum dentatum</i> 'Christom'	7 ft 2 m	5 ft 1.5 m	☉☼	4	white	Showy umbrella-shaped flower clusters in spring. Attractive autumn red leaf color and blue clusters of fruit.
<b>COMPACT EUROPEAN CRANBERRY</b> <i>Viburnum opulus</i> 'Compactum'	5 ft 1.6 m	6 ft 2 m	●☼	2	white	Standard cultivar; red fruit. Densely flowering; densely fruiting.
<b>DWARF AMERICAN CRANBERRY</b> <i>Viburnum trilobum</i> 'Compactum'	3 ft 1-5 m	3 ft 1.5 m	●☼	2	white	Edible red berries in summer. Brilliant red fall foliage.
<b>EUROPEAN DWARF CRANBERRY</b> <i>Viburnum opulus</i> 'nanum'	2 ft 0.6 m	2 ft 0.6 m	●☼	3	sterile	Dwarf shrub for shaded, moist area. Popular foliage plant with purple fall leaves.
<b>NANNYBERRY</b> <i>Viburnum lentago</i>	10 ft 3 m	7 ft 2.3 m	●☼	3	white	Glossy green foliage turns bright red in fall. Flowers turn into clusters of black berries.
<b>SNOWBALL</b> <i>Viburnum opulus roseum</i>	7 ft 2.3 m	5 ft 1.6 m	☉☼	3	white	Showy snowball shaped flower clusters in spring. Suitable shrub for shaded moist area.
<b>WAYFARING TREE</b> <i>Viburnum lantana</i>	7 ft 2.3 m	7 ft 2.3 m	●☼	3	white	Olive-green, leathery leaves. Fruit turns from red to black.
<b>Willow</b>						
<b>ARCTIC WILLOW</b> <i>Salix purpurea</i> 'Nana'	3 ft 1 m	3 ft 1 m	☉☼	3	n/a	Mound-shaped shrub with linear leaves. Purple stems stand out in winter.
<b>BLUEFOX WILLOW</b> <i>Salix brachycarpa</i> 'Blue Fox'	3 ft 1 m	3 ft 1 m	☉☼	3	n/a	Upright, globe-shaped shrub. Colorful blue-grey foliage.
<b>COYOTE WILLOW</b> <i>Salix exiqua</i> spp.	12 ft 4 m	12 ft 4 m	☉☼	3	n/a	Grows well in moist areas. Used for stream bank stabilization.
<b>FLAME WILLOW</b> <i>Salix</i> 'Flame'	16 ft 5 m	10 ft 3 m	☉☼	3	n/a	Flaming red-orange bark for winter color. Compact dense oval shrub.
<b>FRENCH PUSSY WILLOW</b> <i>Salix discolor</i>	16 ft 5 m	10 ft 3 m	☉☼	2	silver	Silvery catkins appear in spring before leaves. Nostalgic, large shrub that likes moist areas.
<b>HAKURA NISHIKI WILLOW</b> <i>Salix integra</i> 'Hakura Nishiki'	3 ft 1 m	3 ft 1 m	☉☼	3	n/a	Tri-color pink, white and green leaves. Unique new Japanese variety.
<b>POLAR BEAR WILLOW</b> <i>Salix salicola</i>	16 ft 5 m	6 ft 2 m	☉☼	2	silver	Hardy as a polar bear from the Arctic Circle. Hairy silvery blue foliage on this new variety.
<b>WOLF WILLOW</b> <i>Elaeagnus commutata</i>	7 ft 2.3 m	7 ft 2.3 m	☼	2	yellow	Hardy, native shrub with silvery foliage. Scented spring flowers. Drought tolerant.

☉ = part sun ● = shade ☼ = sun

# Evergreens

Variety	Height	Spread	Sunlight	Zone	Colour	Features
<b>RUSSIAN CYPRESS-MICRO-BIOTA</b> <i>Microbiota decussata</i>	1 ft 0.3 m	5 ft 1.6 m	☉☀	3	green	Rare evergreen with bright green foliage used as ground cover. Similar to and a substitute for cedar.
<b>SIBERIAN LARCH</b> <i>Larix sibirica</i>	50 ft 16 m	23 ft 7 m	☉☀	2	green	Unique deciduous conifer sheds needles in winter. Soft clusters of needles. Golden fall color.
<b>Cedar</b>						
<b>DANICA CEDAR</b> <i>Thuja occidentalis 'Danica'</i>	3 ft 1 m	3 ft 1 m	☉	4	green	Slow-growing, compact variety. Prefers moist areas; keep out of windy areas.
<b>GLOBE CEDAR</b> <i>Thuja occidentalis 'Woodwardii'</i>	7 ft 2.3 m	7 ft 2.3 m	☉	3-4	dark green	Large, globe-shaped evergreen.
<b>LITTLE GIANT CEDAR</b> <i>Thuja occidentalis 'Little Giant'</i>	3 ft 1 m	3 ft 1 m	☉	4	green	Popular globe-shaped evergreen.
<b>SKYBOUND CEDAR</b> <i>Thuja occidentalis 'Skybound'</i>	18 ft 5.5 m	4 ft 1.25 m	☉	3	green	Improved hardiness and rich dark foliage
<b>WAREANA or SIBERIAN CEDAR</b> <i>Thuja occidentalis 'Wareana'</i>	10 ft 3 m	7 ft 2.3 m	☉	3-4	green	Broader upright cedar. Robust rugged plant. Also called Siberian cedar.
<b>Junipers</b>						
<b>BAR HARBOR JUNIPER</b> <i>Juniperus horizontalis 'Bar Harbor'</i>	1 ft 0.3 m	7 ft 2.3 m	☉☀	3	bluish-green	Grayish-green foliage turns purple in winter. Center tends to open up with age.
<b>BLUE ARROW JUNIPER</b> <i>Juniperus virginiana 'Blue Arrow'</i>	13 ft 4 m	2 ft 0.6 m	☉☀	3	blue	Very narrow upright juniper, steel-blue foliage, requires no trimming.
<b>BLUE CHIP JUNIPER</b> <i>Juniperus horizontalis 'Blue Chip'</i>	1 ft 0.3 m	7 ft 2.3 m	☉☀	3	blue	Bright blue foliage is retained to winter. Popular, superb spreading ground cover.
<b>BLUE PRINCE JUNIPER</b> <i>Juniperus horizontalis 'Blue Prince'</i>	1 ft 0.3 m	3 ft 1 m	☉☀	3	blue-green	Provide snow cover in winter for extra protection. Excellent blue color.
<b>BLUE RUG JUNIPER</b> <i>Juniperus horizontalis 'Wiltoni'</i>	0.5 ft 0.15 m	7 ft 2.3 m	☉☀	3	blue	Lowest growing, spreading Juniper. Useful as a ground cover.
<b>BLUE STAR JUNIPER</b> <i>Juniperus squamata 'Blue Star'</i>	1.5 ft 0.5 m	5 ft 1.6 m	☉☀	4	blue	Bright blue, star-shaped needles for color contrast. Popular spreading, slow growing juniper.
<b>BUFFALO JUNIPER</b> <i>Juniperus sabina 'Buffalo'</i>	1 ft 0.3 m	7 ft 2 m	☉☀	3	green	Bright green feathery foliage on this spreader. Juniper of the Year in 1996, 1997 and 1998.
<b>CALGARY CARPET JUNIPER</b> <i>Juniperus sabina 'Calgary Carpet'</i>	1 ft 0.3 m	5 ft 1.6 m	☉☀	3	green	Bright green foliage and dense branches. One of the best spreading junipers for the Prairies.
<b>COLOGREEN JUNIPER</b> <i>Juniperus scopulorum 'Cologreen'</i>	10 ft 3 m	5 ft 1.6 m	☉☀	3	green	Bright green foliage on this upright juniper. Compact branches and conical form.
<b>MEDORA JUNIPER</b> <i>Juniperus scopulorum 'Medora'</i>	10 ft 3 m	3 ft 1 m	☉☀	3	blue-green	Upright columnar form. Bluish-green foliage.
<b>MONTANA GREEN JUNIPER</b> <i>Juniperus scopulorum 'Montana Green'</i>	13 ft 4 m	5 ft 1.6 m	☉☀	3	green	Requires little pruning to maintain its shape.
<b>MOONGLOW JUNIPER</b> <i>Juniperus scopulorum 'Moonglow'</i>	10 ft 3 m	5 ft 1.6 m	☉☀	3	blue	Popular performing upright blue Juniper. Similar to Wichita Blue with glowing foliage.
<b>MOTHERLODE JUNIPER</b> <i>Juniperus horizontalis 'Motherlode'</i>	0.5 ft 0.15 m	4 ft 1.3 m	☀	4	gold	Golden yellow sport of Wiltoni. New variety from Iseli Nursery.
<b>NEW BLUE TAM JUNIPER</b> <i>Juniperus sabina 'Tamariscifolia'</i>	2 ft 0.6 m	5 ft 1.6 m	☉☀	3	blue	Symmetrical mound-shaped spreader. Good contrasting blue foliage color.
<b>PRINCE OF WALES JUNIPER</b> <i>Juniperus horizontalis 'Prince of Wales'</i>	1 ft 0.3 m	7 ft 2.3 m	☉☀	3	green	Lowest growing green spreading juniper. Selection from the Waterton area of SW Alberta.
<b>SAVIN JUNIPER</b> <i>Juniperus sabina</i>	3 ft 1 m	7 ft 2.3 m	☉●☀	3	green	Original species with scale-like, green foliage. Vase-shaped form on this spreading juniper.
<b>SCANDIA JUNIPER</b> <i>Juniperus sabina 'Scandia'</i>	1 ft 0.3 m	5 ft 1.6 m	☉●☀	3	green	Sister to Arcadia juniper but smaller and lower growing. Feathery spreader is a good green ground cover.



# Evergreens

Variety	Height	Spread	Sunlight	Zone	Colour	Features
<b>SKYROCKET JUNIPER</b> <i>Juniper virginiana 'Skyrocket'</i>	13 ft 4 m	2 ft 0.6 m	☉☼	3	bluish-green	Narrow columnar juniper.
<b>TABLE TOP BLUE JUNIPER</b> <i>Juniperus scopulorum 'Table Top'</i>	5 ft 1.6 m	7 ft 2.3 m	☉☼	3	blue	Unique upright, flat topped variety. Use as a specimen plant.
<b>TAMARISCIFOLIA JUNIPER</b> <i>Juniperus sabina 'Tamariscifolia'</i>	2 ft 0.6 m	7 ft 2.3 m	☉☼	3	green	Symmetrical mound-shaped spreader. Attractive branches give formal appearance.
<b>WICHITA BLUE JUNIPER</b> <i>Juniperus scopulorum 'Wichita Blue'</i>	10 ft 3 m	5 ft 1.5 m	☉☼	3	blue	Similar to Moonglow but finer foliage. Most popular upright juniper.
<b>Pine</b>						
<b>AUSTRIAN PINE</b> <i>Pinus nigra</i>	40 ft 12 m	20 ft 6.6 m	☼	4	green	Dark green stiff needles, compact growth habit. Will's Select variety, excellent pyramidal shape.
<b>DWARF BLUE SCOTCH PINE</b> <i>Pinus sylvestris 'Glaucanana'</i>	6 ft 2 m	6 ft 2 m	☼	3	blue	Round globe-shaped Scotch pine.
<b>MUGHO PINE</b> <i>Pinus mugo</i>	15 ft 5 m	10 ft 3 m	☉☼	1	green	Popular shrubby pine with 2 short needles in cluster. Hardest coniferous evergreen shrub.
<b>MUGHO PINE</b> <i>Pinus mugo 'Mops'</i>	3 ft 1 m	3 ft 1 m	☉☼	3	green	Nice short, compact form of Mugo.
<b>MUGHO PINE</b> <i>Pinus mugo 'Slowmound'</i>	1 ft 0.3 m	1 ft 0.3 m	☉☼	3	green	Smallest rock garden variety.
<b>MUGHO PINE</b> <i>Pinus mugo 'Big Tuna'</i>	13 ft 4 m	7 ft 2.3 m	☉☼	3	green	Tall, narrow variety.
<b>MUGHO PINE (Dwarf)</b> <i>Pinus mugo 'Pumilo'</i>	4 ft 1.3 m	7 ft 2.3 m	☉☼	3	green	Dwarf form of Mugo.
<b>SCOTCH PINE</b> <i>Pinus sylvestris</i>	50 ft 15 m	26 ft 8.3 m	☼	3	bluish-green	Hardy fast growing pine with long needles and cinnamon red bark.
<b>SWISS STONE PINE</b> <i>Pinus cembra</i>	13 ft 4 m	10 ft 3 m	☉☼	3	green	Columnar conical conifer. Picturesque pine tree.
<b>Spruce</b>						
<b>BABY BLUE EYES SPRUCE</b> <i>Picea pungens glauca 'Baby Blue'</i>	10 ft 3 m	8 ft 2.6 m	☉☼	3	blue	Dwarf blue spruce, great for small yards.
<b>BIRD'S NEST SPRUCE</b> <i>Picea abies 'Nidiformis'</i>	3 ft 1 m	5 ft 1.6 m	☉☼	3	dark green	Flat-topped, low growing coniferous shrub. Use in place of juniper.
<b>COLORADO BLUE SPRUCE</b> <i>Picea pungens 'Glauca'</i>	35 ft 11 m	13 ft 4 m	☉☼	2	blue	Selected for blue needle color as a specimen. Also used as a screen, shade, or street tree.
<b>COLORADO GREEN SPRUCE</b> <i>Picea pungens</i>	35 ft 11 m	13 ft 4 m	☉☼	2	green	Long rigid needles on pyramidal-shaped tree. Used as a screening tree or in shelter-belts.
<b>COLUMNAR BLUE SPRUCE</b> <i>Picea pungens 'Fastigiata'</i>	15 ft 3 m	7 ft 1 m	☉☼	3	blue	Popular hardy, columnar, narrow spruce that can be used as a Picea specimen instead of an upright juniper or pyramidal cedar.
<b>FAT ALBERT SPRUCE</b> <i>Picea pungens 'Fat Albert'</i>	25 ft 8 m	12 ft 4 m	☉☼	3	blue	Beautiful bright blue spruce from Iseli Nursery. Broader based and wider than Colorado Spruce.
<b>GLOBE BLUE/GREEN SPRUCE</b> <i>Picea pungens 'Globosa'</i>	5 ft 1.6 m	5 ft 1.6 m	☉☼	2	blue green	Compact, dwarf slow growing, globe-shaped spruce. Also available as an attractive grafted standard as a specimen.
<b>HOOPSII SPRUCE</b> <i>Picea pungens 'Hoopsii'</i>	30 ft 10 m	10 ft 3 m	☉☼	2	blue	Brightest bluest spruce. Narrow pyramidal shape.
<b>MONTGOMERY SPRUCE</b> <i>Picea pungens 'Montgomery'</i>	5 ft 1.6 m	5 ft 1.6 m	☉☼	3	blue	Large than a Globe and little more oval shaped.
<b>WEeping NORWAY SPRUCE</b> <i>Picea abies 'Pendula'</i>	7 ft 2.3 m	3 ft 1 m	☉☼	4	green	Weeping spruce requires staking to grow upright. Also grown as a ground cover, blue variety available.

☉ = part sun ● = shade ☼ = sun

# Deciduous Trees

Name	Height	Spread	Zone	Fall Colour	Flower Colour	Features
<b>SNOWBIRD HAWTHORN</b> <i>Crataegus 'Snowbird'</i>	15 ft 5 m	12 ft 4 m	3	green	white	Upright tree with double white spring flowers. Glossy serrated leaves. Clusters of red fruit.
<b>NORTHWEST POPLAR</b> <i>Populus 'Northwest'</i>	65 ft 20 m	50 ft 15 m	2	yellow	catkins	Largest and fastest growing poplar tree. Useful for shade or shelterbelt.
<b>OHIO BUCKEY</b> <i>Aesculus glabra</i>	20 ft 7 m	15 ft 5 m	3	yellow	yellow	Large compound leaves. Interesting prickly nuts follow flowers.
<b>QUAKING TREMBLING ASPEN</b> <i>Populus tremuloides 'Pikes Bay'</i>	30 ft 10 m	15 ft 5 m	2	yellow	catkins	Native tree that grows in natural groves. Leaves tremble in wind.
<b>MAYDAY</b> <i>Prunus padus commutata</i>	30 ft 10 m	25 ft 8 m	3	yellow	white	Showy fragrant flower clusters in May. Black bitter fruit attracts birds.
<b>BURR OAK</b> <i>Quercus macrocarpa</i>	30 ft 10 m	20 ft 7 m	3	yellow light	acorns	Rare, slow growing, hardy oak for the prairies. Produces acorns. Lobed leaves. Corky bark.
<b>RUSSIAN OLIVE</b> <i>Elaeagnus angustifolia</i>	20 ft 6 m	12 ft 4 m	4	yellow	yellow	Small tree with attractive silver leaves. Drought tolerant.
<b>SCHUBERT CHOKECHERRY</b> <i>Prunus virginiana 'Schubert'</i> <i>Prunus virginiana 'Midnight'</i>	30 ft 10 m	15 ft 5 m	3	purple	white	Black cherries follow fragrant spring flowers. New leaves emerge green but mature purple.
<b>AMUR MAACKIA</b> <i>Maackia amurensis</i>	18 ft 6 m	15 ft 5 m	3	green	cream	Excellent small tree. Blooms late summer.
<b>DROP MORE LINDEN</b> <i>Tilia mongolica 'Harvest Gold'</i>	40 ft 12 m	30 ft 9 m	3	yellow	yellowish white	Bright golden color in fall.
<b>SUTHERLAND CARAGANA</b> <i>Caragana arborescens 'Sutherland'</i>	13 ft 4 m	5 ft 1.5 m	2	yellow	yellow	Tall, columnar accent plant. Attractive in row plantings as a tall hedge.
<b>DROP MORE LINDEN</b> <i>Tilia flavescens 'Dropmore'</i>	33 ft 10 m	20 ft 7 m	3	yellow	yellowish white	Medium-sized pyramidal tree, dark green leaves. Fragrant flowers in June.
<b>AMERICAN ELM</b> <i>Ulmus americana</i>	50 ft 15 m	30 ft 9 m	3	yellow	samara	Umbrella or vase-shaped street or shade tree. Good in large open areas. Toothed leaves.
<b>TOBA HAWTHORN</b> <i>Crataegus mordenensis 'Toba'</i>	15 ft 5 m	12 ft 4 m	3	green	pink	Upright tree with double pink flowers in spring. Glossy serrated foliage. Clusters of red fruit.
<b>TOWER POPLAR</b> <i>Populus canescens 'Tower'</i>	30 ft 9 m	7 ft 2 m	2	yellow	catkins	Narrow columnar tree for smaller yards.
<b>ADVANCE MAYDAY</b> <i>Prunus padus commutata 'Advance'</i>	30 ft 10 m	20 ft 7 m	3	yellow	white	Flowers bloom earlier than standard Maydays.
<b>AMUR CHERRY</b> <i>Prunus maackii 'Jeffree' (Goldrush)</i>	26 ft 8.3 m	20 ft 7 m	3	yellow	white	Improved resistance to winter damage.
<b>AMUR CHERRY</b> <i>Prunus maackii</i>	30 ft 10 m	15 ft 5 m	3	yellow	white	Black fruit follow flowers. Colorful bronze bark for winter color.
<b>Alder</b>						
<b>PRAIRIE HORIZONE ALDER</b> <i>Alnus hirsuta 'Harbin'</i>	40 ft 12 m	30 ft 9 m	3	yellow	catkins	Dark green-purple catkins that turn golden brown in the fall.
<b>Ash</b>						
<b>AMERICAN MOUNTAIN ASH</b> <i>Sorbus americana</i>	25 ft 8 m	20 ft 7 m	3	orange	white	Orange fruit in fall and winter attracts birds. Spring flowers, lacy leaves, good fall color.
<b>MANCHURIAN ASH</b> <i>Fraxinus mandschurica</i>	30 ft 10 m	15 ft 5 m	3	yellow		Symmetrical street or shade tree. More compact than Green Ash.
<b>EUROPEAN MOUNTAIN ASH</b> <i>Sorbus aucuparia</i>	30 ft 10 m	20 ft 7 m	3	orange	white	Similar to American Mountain Ash but larger.

# Deciduous Trees

Name	Height	Spread	Zone	Fall Colour	Flower Colour	Features
<b>SHOWY MOUNTAIN ASH</b> <i>Sorbus decora</i>	20 ft 7 m	15 ft 5 m	2	orange	white	Hardest Mountain Ash with lacy compound leaves. Showy flowers and fruit.
<b>PATMORE GREEN ASH</b> <i>Fraxinus pennsylvanica 'Patmore'</i>	30 ft 10 m	15 ft 5 m	3	green	none	Seedless selection that leafs out earlier and holds leaves longer than other green ash.
<b>OAKLEAF MOUNTAIN ASH</b> <i>Sorbus hybrida</i>	30 ft 10 m	20 ft 7 m	3	yellow	white	Leaves shaped like oak leaves. Reddish orange berries popular with birds.
<b>NORTHERN TREASURE ASH</b> <i>Fraxinus nigra 'Northern Treasure'</i>	30 ft 10 m	15 ft 5 m	3	yellow	none	Hybrid with upright growth. Excellent cold tolerance.
<b>RUSSIAN MOUNTAIN ASH</b> <i>Sorbus aucuparia 'Rossica'</i>	25 ft 8 m	12 ft 4 m	3	orange	white	Another selection of European Mountain Ash. Upright columnar growth habit.
<b>FALL GOLD BLACK ASH</b> <i>Fraxinus nigra 'Fallgold'</i>	30 ft 10 m	15 ft 5 m	3	yellow	none	More uniform shape than green ash. Suitable seedless street tree.
<b>Aspen</b>						
<b>SWEDISH COLUMNAR ASPEN</b> <i>Populus tremula 'Erecta'</i>	30 ft 10 m	5 ft 2 m	3	yellow	catkins	Narrow columnar tree suitable for small area. Specimen tree useful for a vertical accent.
<b>Crabapple</b>						
<b>ECHTERMAYER CRABAPPLE</b> <i>Malus 'Echtermeyer'</i>	15 ft 5 m	6 ft 3 m	3	red	purple	Weeping variety. Large purple-red flowers.
<b>DOLGO CRABAPPLE</b> <i>Malus 'Dolgo'</i>	25 ft 8 m	15 ft 5 m	3	yellow	white	Wide branching, white flowering crabapple. Ornamental value plus makes delicious jelly.
<b>COLUMNAR CRABAPPLE</b> <i>Malus baccata 'Rosthern'</i>	20 ft 6 m	4 ft 1 m	3	yellow	white	Narrow columnar tree suitable for small yard. Fragrant flowers and small fruit.
<b>KELSEY CRABAPPLE</b> <i>Malus 'Kelsey'</i>	15 ft 5 m	15 ft 5 m	4	orange	reddish purple	Bronze foliage. Only double flowering crab. Named after Henry Kelsey, the explorer.
<b>MAKAMIK CRABAPPLE</b> <i>Malus 'Makamik'</i>	20 ft 6 m	15 ft 5 m	3	orange	rose	Vigorous growing crab with profuse flowers. Profuse fruit persists well into winter.
<b>RADIANT CRABAPPLE</b> <i>Malus 'Radiant'</i>	20 ft 6 m	15 ft 5 m	3	orange	rose	New leaves emerge red then turn to green. Popular red flowering crabapple.
<b>ROSYGLO CRABAPPLE</b> <i>Malus 'Rosy Glo'</i>	6 ft 2 m	6 ft 2 m	3	bronze	purple-pink	Weeping growth habit; from native Alberta tree. Purple-pink flowers followed by purple-black fruit.
<b>RUDOLPH CRABAPPLE</b> <i>Malus 'Rudolph'</i>	20 ft 6 m	15 ft 5 m	3	orange	red	Small tree with very attractive spring growth. Orange fruit lasts well into the winter.
<b>HOPA CRABAPPLE</b> <i>Malus 'Hopa'</i>	20 ft 6 m	15 ft 5 m	3	yellow	rose	Prolific bloomer. Fruit good for jelly Upright growth habit widens out with age.
<b>SELKIRK CRABAPPLE</b> <i>Malus 'Selkirk'</i>	20 ft 7 m	20 ft 7 m	3	orange	pink	Hardy vigorous tree. Red leaves turn bronze-green over summer.
<b>SPRING SNOW CRABAPPLE</b> <i>Malus 'Spring Snow'</i>	20 ft 7 m	20 ft 7 m	3	orange	white	Does not bear fruit. Good choice for patio. Tolerates heat well.
<b>STRATHMORE CRABAPPLE</b> <i>Malus 'Strathmore'</i>	20 ft 6 m	13 ft 4 m	3	orange	pink	Profuse pink blooms. Uniform upright pyramidal grower.
<b>THUNDERCHILD CRABAPPLE</b> <i>Malus 'Thunderchild'</i>	20 ft 7 m	15 ft 5 m	3	orange	pink	More uniform shape than Royalty. Consistent performer resistant to fire blight.
<b>ROYAL BEAUTY CRABAPPLE</b> <i>Malus pendula 'Royal Beauty'</i>	9 ft 3 m	3 ft 1 m	2b	Yellow pink	reddish	Bronze foliage and dark red apples appear in the fall.
<b>ALMEY CRABAPPLE</b> <i>Malus 'Almey'</i>	25 ft 8 m	15 ft 5 m	3	bronze	rose pink	Red fruit, upright growth habit. Purplish new growth, mature leaves bronzy green.

## COURSES

We offer spring, summer and winter courses.  
For a complete listing, visit [www.parklandgarden.ca](http://www.parklandgarden.ca)  
or drop by for a course description sheet.

shop online at [www.parklandgarden.com](http://www.parklandgarden.com)

# Deciduous Trees

Name	Height	Spread	Zone	Fall Colour	Flower Colour	Features
<b>ROYALTY CRABAPPLE</b> <i>Malus 'Royalty'</i>	20 ft 6 m	15 ft 5 m	3	orange	red	Popular variety has spectacular purple leaves. Dark red flowers in spring are fit for royalty.
<b>Crabapples</b>						
<b>RED JADE CRABAPPLE</b> <i>Malus pendula 'Red Jade'</i>	9 ft 3 m	12 ft 4 m	3	yellow	pink	Foliage is glossy green, yields outstanding display of red apples in the fall.
<b>Lilacs</b>						
<b>IVORY SILK LILAC</b> <i>Syringa reticulata 'Ivory Silk'</i>	20 ft 7 m	12 ft 4 m	3	orange	creamy white	Compact selection of Japanese Tree Lilac. Creamy flower clusters and cherry-like bark.
<b>JAPANESE TREE LILAC</b> <i>Syringa reticulata</i>	20 ft 7 m	12 ft 4 m	3	orange	creamy white	Creamy flower clusters in summer. Deep brown bark color stands out in winter.
<b>Maple</b>						
<b>AMUR MAPLE</b> <i>Acer ginnala</i>	16 ft 5 m	10 ft 3 m	3	scarlet red	samara	Small graceful tree or large shrub. Excellent fall color leaves and 2-winged seeds.
<b>MANITOBA MAPLE</b> <i>Acer negundo 'Sensation'</i>	30 ft 10 m	20 ft 7 m	2	yellow	sammara	Has furrowed bark and is also called Box Elder. Hardy tree useful as a screen or windbreak.
<b>Poplar</b>						
<b>NORTHWEST</b> <i>Populus x jackii 'Northwest'</i>	66 ft 20.3 m	40 ft 12 m	2	yellow	catkins	Fast growing poplar, used for shelterbelts.
<b>PRAIRIE SKY</b> <i>Populus x canadensis 'Prairie Sky'</i>	40 ft 12 m	10 ft 3 m	3	yellow	catkins	Slightly wider than tower poplar but has a better form.
<b>Willow</b>						
<b>LAUREL LEAF WILLOW</b> <i>Salix pentandra</i>	30 ft 9 m	25 ft 8 m	2	green	catkins	Fast growing tree with glossy leaves. Water loving tree that likes moist area.
<b>SILVER or WHITE WILLOW</b> <i>Salix alba sericea</i>	35 ft 11 m	20 ft 7 m	3	silver	catkins	Fast growing tree with silver summer foliage. Likes moist area.
<b>GOLDEN WILLOW</b> <b>Salix alba vitellina</b>	30 ft 10 m	25 ft 8 m	4	yellow	catkins	Fast growing tree suitable for shelterbelts. Attractive golden stems stand out in winter.

Trees for Small Yards	Trees with Fall Color	Trees Showy All Year	Trees that Attract Birds
Amur Maple	Amur Cherry	Amur Cherry	Apple Varieties
Apple/Pear Varieties	Amur/Northwood Maple	Evergreens	Amur Cherry
Apricot/Plum Varieties	Apricot/Plum Varieties	Flowering Crabapple	Flowering Crabs
Bakerii Spruce	Ash/Elm/Poplar Varieties	French Pussy Willow	Hawthorn Varieties
Bristercone Pine	Bur Oak	Golden Willow	Mayday
Flowering Crabapple	Butternut	Grafted Caragana	Mtn. Ash Varieties
Grafted Caragana	Larch/Linden Varieties	Hawthorn Varieties	Pear Varieties
Hawthorn Varieties	Mtn. Ash Varieties	Japanese Tree Lilac	Pin Cherry
Japanese Tree Lilac	Ohio Buckeye	Mtn. Ash Varieties	Plum Varieties
Montgomery Spruce	Pear/Plum Varieties	Oak	Schubert Chokeycherry
Muckle Plum	Pin Cherry	Pear Varieties	
Pyramidal Mtn. Ash	Royal Flowering Crab	Pin Cherry	
Showy Mtn. Ash	Silver maple	Russian Olive	
Swedish Aspen	Swedish Aspen	Silky White Willow	
Tower Poplar			

# Tree Fruit

Name	Height	Spread	Zone	Fall Colour	Flower Colour	Features
<b>Apples</b>						
<b>FALL RED APPLE</b> <i>Malus 'Fall Red'</i>	15-20 ft 5-7 m	12-15 ft 4-5 m	3	yellow	white	Large, red fruit color. Ripens in September. Good for eating fresh and stores well.
<b>PARKLAND APPLE</b> <i>Malus 'Parkland'</i>	15-20 ft 5-7 m	12-15 ft 4-5 m	3	yellow	white	Medium-sized red fruit. Ripens in late August. Excellent to eat fresh, cooking and stores well.
<b>HARDI-MAC APPLE</b> <i>Malus 'Hardi-Mac'</i>	15-20 ft 5-7 m	12-15 ft 4-5 m	3	yellow	light pink	Bright red crisp fruit. Ripens late September.
<b>RED SPARKLE APPLE</b> <i>Malus 'Red Sparkle'</i>	15-20 ft 5-7 m	12-15 ft 4-5 m	3	yellow	white	Medium-sized apple with nutty/fruity taste. Bright red fruit with green ribbing.
<b>SEPTEMBER RUBY APPLE</b> <i>Malus 'September Ruby'</i>	15-20 ft 5-7 m	12-15 ft 4-5 m	3	yellow	white	Medium-sized red fruit. Ripens in mid-September. Good for eating fresh or juicing. Stores well.
<b>KERR APPLECRAB</b> <i>Malus 'Kerr'</i>	20 ft 5-7 m	15 ft 4-5 m	3	yellow	white	Cross of apple and crab with mid-size deep/dark red fruit. Ripens in September. Good for eating fresh.
<b>RESCUE APPLECRAB</b> <i>Malus 'Rescue'</i>	20 ft 7 m	15 ft 5 m	3	yellow	white	Cross of apple and crab produces mid-size green red striped fruit. Ripens in September.
<b>NORLAND APPLE</b> <i>Malus 'Norland'</i>	15-20 ft 5-7 m	12-15 ft 4-5 m	3	yellow	white	Medium-sized green fruit with red stripes. Ripens in mid- August. Good to eat fresh.
<b>PATTERSON APPLE</b> <i>Malus 'Patterson'</i>	15-20 ft 5-7 m	12-15 ft 4-5 m	3	yellow	white	Mid-sized yellow fruit. Ripens in mid- September. Good for eating fresh and cooking.
<b>BATTLEFORD APPLE</b> <i>Malus 'Battleford'</i>	15-20 ft 5-7 m	12-15 ft 4-5 m	3	yellow	white	Large-sized green and red striped fruit. Ripens September. Good for eating fresh or cooking.
<b>HARCOURT APPLE</b> <i>Malus 'Harcourt'</i>	15-20 ft 5-7 m	12-15 ft 4-5 m	3	yellow	white	Fruit is red. Ripens late September. Good for eating fresh.
<b>NORKENT APPLE</b> <i>Malus 'Norkent'</i>	15-20 ft 5-7 m	12-15 ft 4-5 m	3	yellow	white	Large fruit, similar taste to golden delicious. Light-green apple well streaked with red.
<b>GOODLAND APPLE</b> <i>Malus 'Goodland'</i>	15-20 ft 5-7 m	12-15 ft 4-5 m	3	yellow	white	Large fruit is red and green. Ripens mid-September. Good for eating fresh, cooking and stores well.
<b>COMBINATION APPLE</b> <i>Malus 'Combination'</i>	15-20 ft 5-7 m	12-15 ft 4-5 m	3	yellow	light pink	Minimum of 3 cultivars grafted onto one tree. Unique conversation piece for smaller yard.
<b>HARALSON APPLE</b> <i>Malus 'Haralson'</i>	15-20 ft 5-7 m	12-15 ft 4-5 m	3	yellow	white	Fruit is green & red striped. Ripens late-September. Good for eating fresh and stores well.
<b>Cherries</b>						
<b>PINCHERRY</b> <i>Prunus pennsylvanica</i>	16 ft 5 m	10 ft 3 m	3	orange	white	Small ornamental tree with fragrant flowers. Red cherries in fall attract birds. Reddish bark.
<b>EVANS CHERRY</b> <i>Prunus x 'Evans'</i>	9-12 ft 3-4 m	10 ft 3 m	3	yellow	white	Self-pollinating; excellent for eating, jams, etc. Mature tree can yield up to 20 kg. fruit.
<b>ROMEO CHERRY</b> <i>Prunus x Cerasis 'Romeo'</i>	6-8 ft 2.5 m	6-8 ft 2.5 m	2	yellow	white	University of Saskatchewan introduction, good for fresh eating and processing

## Join our on-line Gardening Club!

You will receive our newsletter plus special discount coupons!

Sign up today and your name will be entered into a monthly draw for a chance to win a \$50 Gift Certificate!

**PLUS! One lucky person will win a \$100.00 Gift Certificate.**

Draw to be held July 2008

# Tree Fruit

Name	Height	Spread	Zone	Fall Colour	Flower Colour	Features
<b>JULIET CHERRY</b> <i>Prunus x Kerrasis 'Juliet'</i>	6-8 ft 2.5 m	6-8 ft 2.5 m	2	yellow	white	University of Saskatchewan introduction, fruit has high sugar.
<b>CUPID CHERRY</b> <i>Prunus x Kerrasis 'Cupid'</i>	6-8 ft 2.5 m	6-8 ft 2.5 m	2	yellow	white	University of Saskatchewan introduction that has large fruit and good flavor.
<b>VALENTINE CHERRY</b> <i>Prunus x Kerrasis 'Valentine'</i>	6-8 ft 2.5 m	6-8 ft 2.5 m	2	yellow	white	University of Saskatchewan introduction, tart tasting, good for pies.
<b>Pears</b>						
<b>URE PEAR</b> <i>Pyrus ussuriensis 'Ure'</i>	20 ft 7 m	15 ft 5 m	3	amber	white	2 different varieties required for cross-pollination. Small, sweet, green fruit for canning.
<b>GOLDEN SPICE PEAR</b> <i>Pyrus 'Golden Spice'</i>	20 ft 7 m	15 ft 5 m	3	amber	white	2 different varieties required for cross-pollination. Yellow, spicy fruit in canned and cooked desserts. Showy spring flowers for ornamental value.
<b>EARLY GOLDEN</b> <i>Pyrus 'Early Golden'</i>	20 ft 7 m	13 ft 4 m	3	amber	white	2 different varieties required for cross-pollination. Very showy, large flowers. Wonderful tasty fruit can be used for fresh eating or making jam.
<b>Plums</b>						
<b>BROOKRED PLUM</b> <i>Prunus 'Brookred'</i>	15 ft 5 m	12 ft 4 m	3	amber	white	Red skinned and orange fleshed, larger fruit. Ripens in August. Good for canning.
<b>BOUNTY PLUM</b> <i>Prunus 'Bounty'</i>	15 ft 5 m	12 ft 4 m	3	amber	white	Hardy and productive tree. Sour fruit very good for preserves.
<b>OPATA PLUM</b> <i>Prunus 'Opata'</i>	15 ft 5 m	12 ft 4 m	3	amber	white	Greenish-purple skinned and green-fleshed fruit. Ripens in August. Good for eating fresh and jelly.
<b>PEMBINA PLUM</b> <i>Prunus 'Pembina'</i>	15 ft 5 m	12 ft 4 m	3	amber	white	Purple-skinned, orange-fleshed, larger fruit. Ripens in September. Good for eating fresh.
<b>TECUMSEH PLUM</b> <i>Prunus 'Tecumseh'</i>	15 ft 5 m	12 ft 4 m	3	amber	white	Bears heavy crops of red plums with yellow flesh. One of the earliest to ripen.
<b>BROOKGOLD PLUM</b> <i>Prunus 'Brookgold'</i>	15 ft 5 m	12 ft 4 m	3	amber	white	Gold-skinned tasty fruit. Ripens in August. Good fresh or canned.

## PRIVATE TOURS

Thursday August 7, 2008

5:45 until 9:00 pm

View some spectacular private gardens in and around Red Deer.

There is a fee for this event so please contact us at (403) 346-5613

## WEDDINGS

Planning that special day?  
Would you like a garden wedding?

For more details contact us at 346-5614.

Have your outdoor garden dream wedding at Parkland

# Outdoor Dining Spaces

When creating another room in your outdoor space, it is important to have both function and beauty play a part. Yes, you need a space to sit down to entertain your friends and family, but it can be so much more.

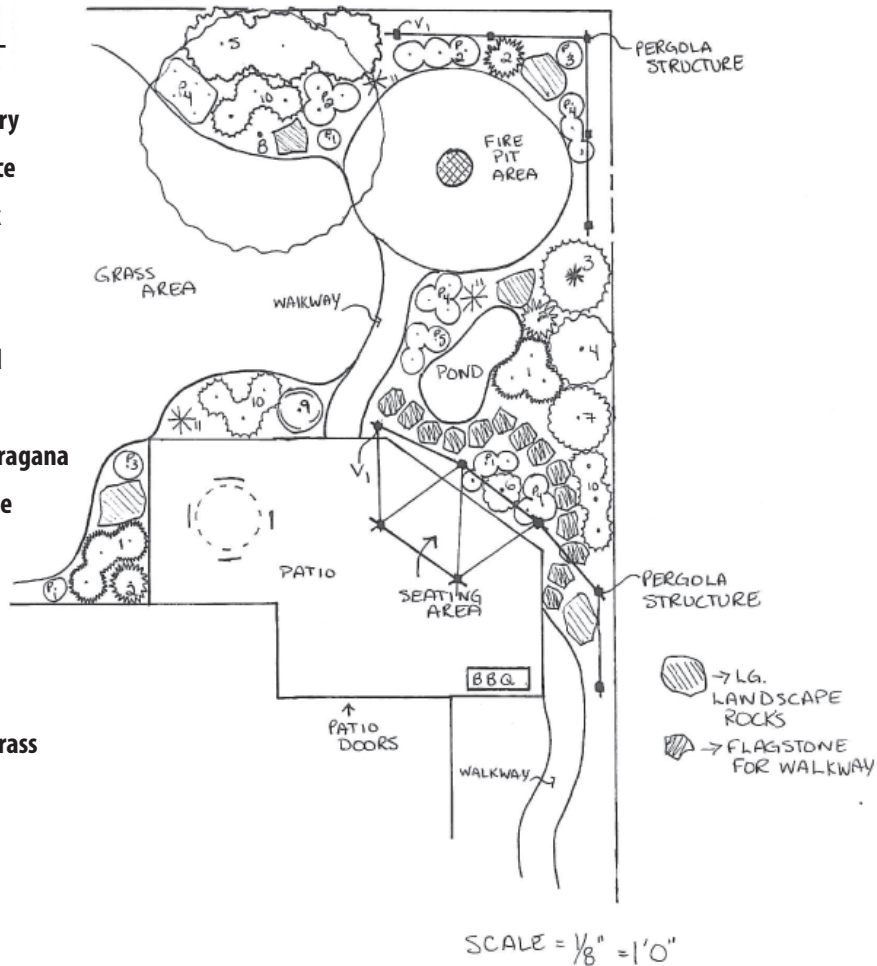
By incorporating structures into your space such as pergolas with lattice work, you can create some shade and privacy as well. Structures also contribute another element to your space by adding texture.

By using plant material, you add texture and color through leaf rather than an abundance of flowers which require more maintenance. The plant material chosen for this area, once established, can be quite drought tolerant, rendering them perfect for a xeriscape landscape.

Other focal points can be created using rocks and ponds. Water features do not have to be difficult to maintain. Some maintenance is required, but if you have good quality pumps and filters, it does not have to be a labor intensive process.

## Code Name

- 1 Blue Star Juniper
- 2 Cherry Bomb Barberry
- 3 Columnar Blue Spruce
- 4 Dart's Gold Ninebark
- 5 Diablo Ninebark
- 6 Emily Carr Rose
- 7 Miss Kim Lilac on Std
- 8 Toba Hawthorn
- 9 Walkers Weeping Caragana
- 10 White Bud Mugo Pine
- 11 Yucca
- P Perennial
- P1 Autumn Joy Sedum
- P2 Blue Oat Grass
- P3 Karl Forester Reed Grass
- P4 Red Fox Speedwell
- P5 Wooly Thyme
- V Vine
- V1 Blue Bird Clemantis



## PANCAKE BREAKFAST

Saturday, June 28 from 8:00 am until 11:00 am

Come to enjoy breakfast on us and check out all the specials!

# Central Alberta's Best Kept Secret!



## Our Guarantee

All of our plants are guaranteed to be true to name, top quality, healthy and free of insects or disease. If you should have any problems or concerns please contact us.

**Tree and shrub are guaranteed for one (1) year from date of purchase and for the original purchase value.**

Our guarantee applies to trees or shrubs that fail to grow after being properly planted and cared for in a recommended area. Guarantee excludes damage done by animals, chemicals, vandalism or nursery stock planted in above ground containers.

The receipt and nursery stock must be presented prior to or at time of adjustment. For more information on returns of plant material, please call us at (403) 346-5613.

## Delivery Service

We realize that some of our customers may not have the ability to transport their statuary, trees or furniture home. We will recommend a delivery service for your convenience.

There is a fee for delivery and prior arrangements need to be made. Delivery service does not apply to bulk products.

Please contact our Information Centre for all your delivery inquiries.

## Directions to us

Located East of Red Deer on Highway 11

only 3 minutes East of 30 Avenue

RR#2, LCD1 Red Deer, AB T4N 5E2

Phone: (403) 346-5613

Fax: (403) 346-4443

E-mail: [info@parklandgc.ca](mailto:info@parklandgc.ca)



Find us on the web: [www.parklandgarden.ca](http://www.parklandgarden.ca)